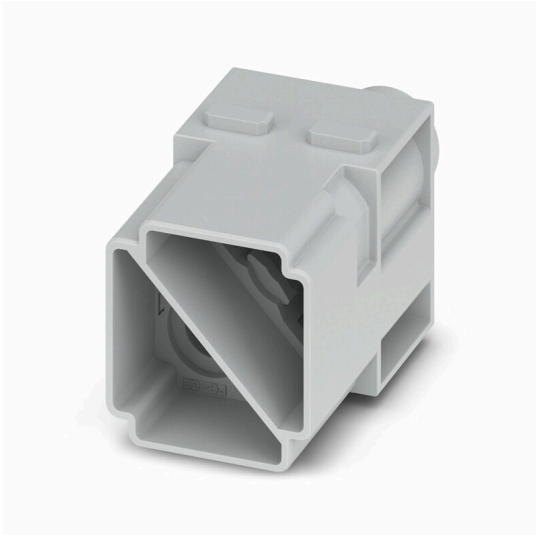


HDC MHP 100 MC 2

Weidmüller Interface GmbH & Co. KG
Klingenbergstraße 26
D-32758 Detmold
Germany

www.weidmueller.com

**Flexible**

The four module sizes make for individual plug solutions that save a huge amount of space. The smaller pitch translates into an optimised design too.

General ordering data

Version	Module, 1000 V, 100 A, Number of poles: 2, Crimp connection, Male, Required plug-in slots: 2
Order No.	3157240000
Type	HDC MHP 100 MC 2
GTIN (EAN)	4099987663465
Qty.	1 items

HDC MHP 100 MC 2

Weidmüller Interface GmbH & Co. KG
Klingenbergstraße 26
D-32758 Detmold
Germany

www.weidmueller.com

Technical data

Approvals

Approvals



ROHS Conform

Dimensions and weights

Depth	33.8 mm	Depth (inches)	1.3307 inch
Height	52.2 mm	Height (inches)	2.0551 inch
Width	29.3 mm	Width (inches)	1.1535 inch
Length	29.3 mm	Length (inches)	1.1535 inch
Net weight	19 g		

Temperatures

Limit temperature -40 °C ... 125 °C

Environmental Product Compliance

RoHS Compliance Status Compliant without exemption
REACH SVHC No SVHC above 0.1 wt%

General data

Number of poles	2	
Number of potentials	2	
UL 94 flammability rating	V-0	
Insulation resistance	1012 Ω	
Plugging cycles	≥ 500	
Type	Male	
Surge voltage category	III	
Pollution severity	3	
Basic material	Polycarbonate, glass fibre reinforced, Polycarbonate	
Series	ModuPlug	
Rated voltage (DIN EN 61984)	1000 V	
Rated voltage according to UL/CSA	600 V	
Rated impulse voltage (DIN EN 61984)	8 kV	
Rated current (DIN EN 61984)	100 A	
Rated current (UR)	Rated current	100 A
Required plug-in slots	2	

PE connection data

Connection type PE Screw connection via module frame

Version

Wire connection cross section AWG, max.	AWG 8	Type of connection	Crimp connection
Wire connection cross section AWG, min.	AWG 2	Conductor cross-section, max.	35 mm ²
Conductor cross-section, min.	10 mm ²		

HDC MHP 100 MC 2

Weidmüller Interface GmbH & Co. KG
Klingenbergstraße 26
D-32758 Detmold
Germany

www.weidmueller.com

Technical data**Power contact**

Tightening torque, max. according to the conductor cross-section	Conductor cross-section, min.	10 mm ²
	Conductor cross-section, max.	35 mm ²

Classifications

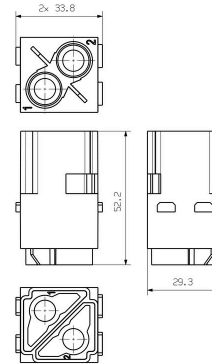
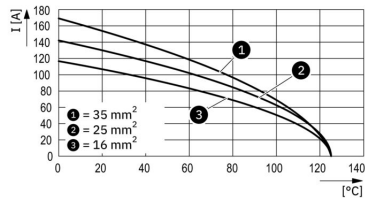
ETIM 8.0	EC000438	ETIM 9.0	EC000438
ETIM 10.0	EC000438	ECLASS 14.0	27-44-02-17
ECLASS 15.0	27-44-02-17		

HDC MHP 100 MC 2

Weidmüller Interface GmbH & Co. KG
Klingenbergstraße 26
D-32758 Detmold
Germany

Drawings

www.weidmueller.com



HDC MHP 100 MC 2

Weidmüller Interface GmbH & Co. KG
 Klingenbergstraße 26
 D-32758 Detmold
 Germany

www.weidmueller.com

Accessories

100 A crimp contacts



Crimps provide a electrical and mechanical connection between wire and contact that is both secure and reliable. The optimal crimp connection is gas-tight and corrosion-resistant.

General ordering data

Type	HDC MHP100 M 10 2	Version	
Order No.	3157310000	Male, silver, 10 - 10 mm ²	
GTIN (EAN)	4099987663533		
Qty.	10 ST		
Type	HDC MHP100 M 16 2	Version	
Order No.	3157320000	Male, silver, 16 - 16 mm ²	
GTIN (EAN)	4099987663540		
Qty.	10 ST		
Type	HDC MHP100 M 25 2	Version	
Order No.	3157330000	Male, silver, 25 - 25 mm ²	
GTIN (EAN)	4099987663557		
Qty.	10 ST		
Type	HDC MHP100 M 35 2	Version	
Order No.	3157340000	Male, silver, 35 - 35 mm ²	
GTIN (EAN)	4099987663564		
Qty.	10 ST		

Miscellaneous



In addition to heavy-duty connectors, RockStar® includes the appropriate accessories for effective, functional and safe system cabling; e.g. coding systems, shield clamps, cover plates and replacement seals

General ordering data

Type	HDC MHP100 REMOVAL TOOL	Version	
Order No.	1480380000	ModuPlug, Contact Removal Tool	
GTIN (EAN)	4050118288933		
Qty.	1 ST		