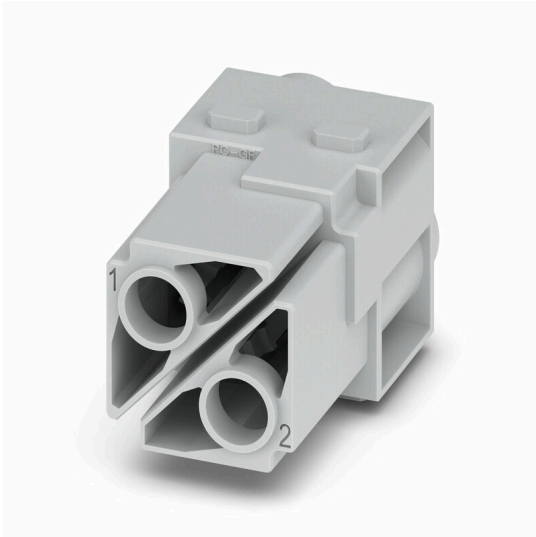


HDC MHP 100 FC 2

Weidmüller Interface GmbH & Co. KG
Klingenbergstraße 26
D-32758 Detmold
Germany

www.weidmueller.com

**Flexible**

The four module sizes make for individual plug solutions that save a huge amount of space. The smaller pitch translates into an optimised design too.

General ordering data

Version	Module, 1000 V, 100 A, Number of poles: 2, Crimp connection, Female, Required plug-in slots: 2
Order No.	3157230000
Type	HDC MHP 100 FC 2
GTIN (EAN)	4099987663458
Qty.	1 items

HDC MHP 100 FC 2

Weidmüller Interface GmbH & Co. KG
 Klingenbergstraße 26
 D-32758 Detmold
 Germany

www.weidmueller.com

Technical data

Approvals

Approvals



ROHS Conform

Dimensions and weights

Depth	34 mm	Depth (inches)	1.3386 inch
Height	50.9 mm	Height (inches)	2.0039 inch
Width	34 mm	Width (inches)	1.3386 inch
Net weight	18 g		

Temperatures

Limit temperature -40 °C ... 125 °C

Environmental Product Compliance

RoHS Compliance Status Compliant without exemption
 REACH SVHC No SVHC above 0.1 wt%

General data

Number of poles	2	UL 94 flammability rating	V-0
Insulation resistance	1012 Ω	Plugging cycles	≥ 500
Type	Female	Surge voltage category	III
Pollution severity	3	Basic material	Polycarbonate, glass fibre reinforced
Series	ModuPlug	Rated voltage (DIN EN 61984)	1000 V
Rated voltage according to UL/CSA	600 V	Rated impulse voltage (DIN EN 61984)	8 kV
Rated current (DIN EN 61984)	100 A	Required plug-in slots	2

PE connection data

Connection type PE Screw connection via module frame

Version

Type of connection	Crimp connection	Conductor cross-section, max.	35 mm ²
Conductor cross-section, min.	10 mm ²		

Classifications

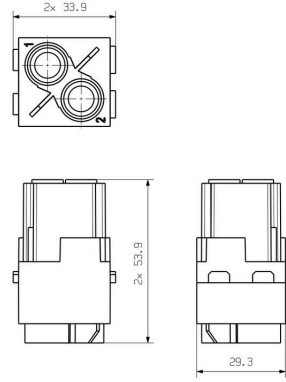
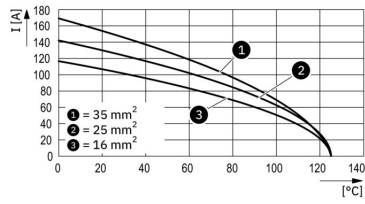
ETIM 8.0	EC000438	ETIM 9.0	EC000438
ETIM 10.0	EC000438	ECLASS 14.0	27-44-02-17
ECLASS 15.0	27-44-02-17		

HDC MHP 100 FC 2

Weidmüller Interface GmbH & Co. KG
Klingenbergstraße 26
D-32758 Detmold
Germany

Drawings

www.weidmueller.com



HDC MHP 100 FC 2

Weidmüller Interface GmbH & Co. KG
 Klingenbergstraße 26
 D-32758 Detmold
 Germany

www.weidmueller.com

Accessories

100 A crimp contacts



Crimps provide a electrical and mechanical connection between wire and contact that is both secure and reliable. The optimal crimp connection is gas-tight and corrosion-resistant.

General ordering data

Type	HDC MHP100 F 10 2	Version	
Order No.	3157270000	Female, silver, 10 - 10 mm ²	
GTIN (EAN)	4099987663496		
Qty.	10 ST		
Type	HDC MHP100 F 16 2	Version	
Order No.	3157280000	Female, silver, 16 - 16 mm ²	
GTIN (EAN)	4099987663502		
Qty.	10 ST		
Type	HDC MHP100 F 25 2	Version	
Order No.	3157290000	Female, silver, 25 - 25 mm ²	
GTIN (EAN)	4099987663519		
Qty.	10 ST		
Type	HDC MHP100 F 35 2	Version	
Order No.	3157300000	Female, silver, 35 - 35 mm ²	
GTIN (EAN)	4099987663526		
Qty.	10 ST		

Miscellaneous



In addition to heavy-duty connectors, RockStar® includes the appropriate accessories for effective, functional and safe system cabling; e.g. coding systems, shield clamps, cover plates and replacement seals

General ordering data

Type	HDC MHP100 REMOVAL TOOL	Version	
Order No.	1480380000	ModuPlug, Contact Removal Tool	
GTIN (EAN)	4050118288933		
Qty.	1 ST		