

**HDC HDD 52 MC IN 1500****Weidmüller Interface GmbH & Co. KG**

Klingenbergstraße 26

D-32758 Detmold

Germany

[www.weidmueller.com](http://www.weidmueller.com)

HDD series – 10 A, 250 V, 52 poles, 1500 V to PE

The HDD 52 pole inserts were developed for applications requiring voltages of up to 1500 V to PE. All other rated data remain unchanged.

The HDD series with turned crimp contacts is designed for high pole counts in confined spaces. The smaller design saves users space during installation without having to limit the number of poles.

The conductor connection level is designed as a crimp contact. The proven crimp connection technology has been in use for decades. Crimp contacts are not included in the scope of delivery of the inserts.

**General ordering data**

Version	HDC insert, Male, 250 V, 10 A, Number of poles: 52, Crimp connection, Installation size: 6, 8
Order No.	<a href="#">3150550000</a>
Type	HDC HDD 52 MC IN 1500
GTIN (EAN)	4099987608510
Qty.	1 items

## HDC HDD 52 MC IN 1500

**Weidmüller Interface GmbH & Co. KG**  
 Klingenbergstraße 26  
 D-32758 Detmold  
 Germany

www.weidmueller.com

## Technical data

## Dimensions and weights

Depth	110.7 mm	Depth (inches)	4.3583 inch
Height	35.6 mm	Height (inches)	1.4016 inch
Width	34 mm	Width (inches)	1.3386 inch
Length	110.7 mm	Length (inches)	4.3583 inch
Net weight	80.8 g		

## Temperatures

Limit temperature -40 °C ... 125 °C

## Environmental Product Compliance

Chemical resistance	Substance	Acetone
	Chemical resistance	Resistant
	Substance	Ammonia, watery
	Chemical resistance	Conditionally resistant
	Substance	Petrol
	Chemical resistance	Resistant
	Substance	Benzene
	Chemical resistance	Resistant
	Substance	Diesel oil
	Chemical resistance	Conditionally resistant
	Substance	Acetic acid, concentrated
	Chemical resistance	Resistant
	Substance	Potassium hydroxide
	Chemical resistance	Conditionally resistant
	Substance	Methanol
	Chemical resistance	Conditionally resistant
	Substance	Motor oil
Chemical resistance	Conditionally resistant	
Substance	Lye, diluted	
Chemical resistance	Resistant	
Substance	Hydrochlorofluorocarbons	
Chemical resistance	Conditionally resistant	
Substance	Outdoor use	
Chemical resistance	Conditionally resistant	

## Dimensions

Width	34 mm	Total length base	110.7 mm
Height of plug	35.6 mm		

## General data

Number of poles	52
Plugging cycles, silver	≥ 500
Plugging cycles, gold	≥ 500
Type of connection	Crimp connection
Installation size	6, 8
UL 94 flammability rating	V-0
Volume resistance	≤4 mΩ
Colour	beige
Insulation resistance	1010 Ω
Insulating material	PC glass-fibre reinforced (UL-listed and railway-certified)
Insulating material group	IIIa

## HDC HDD 52 MC IN 1500

**Weidmüller Interface GmbH & Co. KG**

Klingenbergstraße 26  
D-32758 Detmold  
Germany

www.weidmueller.com

## Technical data

Conductor cross-section	2.5 mm <sup>2</sup>	
Tightening torque, max. PE connection	1.5 Nm	
Type	Male	
Pollution severity	3	
Tightening torque, min. PE connection	1.2 Nm	
Basic material	Copper alloy	
Series	HDD	
Rated voltage (DIN EN 61984)	250 V	
Rated impulse voltage (DIN EN 61984)	4 kV	
Rated current (DIN EN 61984)	10 A	
Rated current (UR)	Wire connection cross section AWG	AWG 14
	Rated current	10 A
	Wire connection cross section AWG	AWG 16
	Rated current	7 A
	Wire connection cross section AWG	AWG 18
	Rated current	7 A
	Wire connection cross section AWG	AWG 20
	Rated current	2.75 A
	Wire connection cross section AWG	AWG 22
	Rated current	2.75 A
	Wire connection cross section AWG	AWG 24
	Rated current	2.75 A
Rated voltage conductor-PE (III/3)	1500 V	
Rated current (cUR)	Wire connection cross section AWG	AWG 14
	Rated current	6 A
	Wire connection cross section AWG	AWG 16
	Rated current	3.5 A
	Wire connection cross section AWG	AWG 18
	Rated current	3.5 A
	Wire connection cross section AWG	AWG 20
	Rated current	1.47 A
	Wire connection cross section AWG	AWG 22
	Rated current	1.47 A
	Wire connection cross section AWG	AWG 24
	Rated current	1.47 A
Free from halogens	true	
Low smoke acc. DIN EN 45545-2	Yes	
BG	6, 8	
Number of signal contacts	0	
Number of power contacts	52	

### Connection data PE

Connection type PE	Screw connection	Blade size, slotted (PE connection)	SD 0.6 x 3.5, SD 0.8 x 4.0
Stripping length PE connection	10 mm	Tightening torque, max. PE connection	1.5 Nm
Tightening torque, min. PE connection	1.2 Nm	Fixing screw	M 4
Rated cross-section	2.5 mm <sup>2</sup>	Wire cross section, AWG (PE), min.	AWG 20
Wire cross section, AWG (PE), max.	AWG 14		

### Version

Wire connection cross section AWG, max.	AWG 14	Stripping length, rated connection	8 mm
Type of connection	Crimp connection	Installation size	6, 8
Volume resistance	≤4 mΩ	Wire connection cross section AWG, min.	AWG 26
Wire cross-section, solid, max.	2.5 mm <sup>2</sup>	Wire cross-section, solid, min.	0.5 mm <sup>2</sup>

**HDC HDD 52 MC IN 1500**

**Weidmüller Interface GmbH & Co. KG**  
Klingenbergstraße 26  
D-32758 Detmold  
Germany

[www.weidmueller.com](http://www.weidmueller.com)

**Technical data**

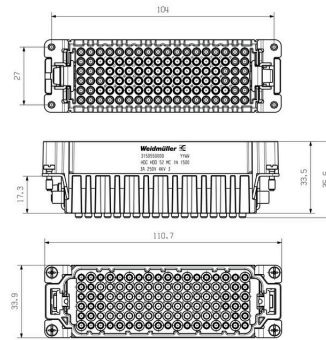
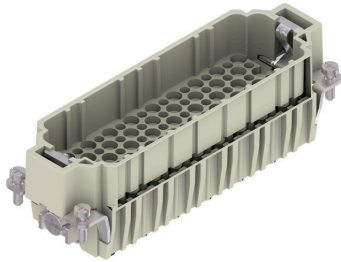
Wire connection cross section, finely stranded, max.	2.5 mm <sup>2</sup>	Wire connection cross section, finely stranded, min.	0.5 mm <sup>2</sup>
Conductor cross-section, max.	2.05 mm <sup>2</sup>	Conductor cross-section, min.	0.14 mm <sup>2</sup>
Basic material	Copper alloy	BG	6, 8

**Classifications**

ETIM 8.0	EC000438	ETIM 9.0	EC000438
ETIM 10.0	EC000438	ECLASS 14.0	27-44-02-05
ECLASS 15.0	27-44-02-05		

HDC HDD 52 MC IN 1500

Drawings



## HDC HDD 52 MC IN 1500

**Weidmüller Interface GmbH & Co. KG**  
 Klingenbergstraße 26  
 D-32758 Detmold  
 Germany

www.weidmueller.com

## Accessories

### DSTV



Various accessories are available for our inserts. This includes coding elements for the inserts.

#### General ordering data

Type	DSTV COST4	Version
Order No.	<a href="#">1471300000</a>	Heavy-duty connectors, Accessories, Coding System
GTIN (EAN)	4008190017354	
Qty.	100 ST	
Type	DSTV COBU5	Version
Order No.	<a href="#">1471500000</a>	Heavy-duty connectors, Accessories, Coding element
GTIN (EAN)	4008190178543	
Qty.	100 ST	

### Slotted screwdriver



VDE insulated slot-head screwdriver, SDI DIN 7437, ISO 2380/2, drive grip output acc. to DIN 5264, ISO 2380/1. SoftFinish grip

#### General ordering data

Type	SDIS 0.6X3.5X100	Version
Order No.	<a href="#">9008390000</a>	Screwdriver, Screwdriver
GTIN (EAN)	4032248056354	
Qty.	1 ST	
Type	SDS 0.6X3.5X100	Version
Order No.	<a href="#">9008330000</a>	Screwdriver, Screwdriver
GTIN (EAN)	4032248056286	
Qty.	1 ST	
Type	SDIS 0.8X4.0X100	Version
Order No.	<a href="#">9008400000</a>	Screwdriver, Screwdriver
GTIN (EAN)	4032248056361	
Qty.	1 ST	
Type	SDS 0.8X4.0X100	Version
Order No.	<a href="#">9008340000</a>	Screwdriver, Screwdriver
GTIN (EAN)	4032248056293	
Qty.	1 ST	

## HDC HDD 52 MC IN 1500

**Weidmüller Interface GmbH & Co. KG**  
 Klingenbergstraße 26  
 D-32758 Detmold  
 Germany

www.weidmueller.com

## Accessories

## Crosshead screwdriver Pozidriv



VDE insulated crosshead screwdriver type Pozidriv SDIK PZ DIN 7438, ISO 8764/2-PZ, output to ISO 8764-PZ, SoftFinish grip

## General ordering data

Type	SDIK PZ 1	Version	
Order No.	<a href="#">9008900000</a>	Screwdriver, Screwdriver	
GTIN (EAN)	4032248266685		
Qty.	1 ST		
Type	SDK PZ 1	Version	
Order No.	<a href="#">9008530000</a>	Screwdriver, Screwdriver	
GTIN (EAN)	4032248056521		
Qty.	1 ST		

## Crimping tools



Crimping tools for turned contacts

- Ratchet guarantees precise crimping
- Release option in the event of incorrect operation
- With stop for exact positioning of the contacts.

## General ordering data

Type	CTX CM 1.6/2.5	Version	
Order No.	<a href="#">9018490000</a>	Pressing tool, Crimping tool for contacts, 0.14mm <sup>2</sup> , 4mm <sup>2</sup> , W crimp	
GTIN (EAN)	4008190884598		
Qty.	1 ST		
Type	CTIN CM 1.6/2.5	Version	
Order No.	<a href="#">9205430000</a>	Pressing tool, Crimping tool for contacts, 0.14mm <sup>2</sup> , 6mm <sup>2</sup> , 4-indent crimp	
GTIN (EAN)	4032248733446		
Qty.	1 ST		

## HDC HDD 52 MC IN 1500

**Weidmüller Interface GmbH & Co. KG**  
 Klingenbergstraße 26  
 D-32758 Detmold  
 Germany

www.weidmueller.com

## Accessories

### Contact removal tools



Weidmüller offers a variety of crimping tools, contact removal tools, and fibre optic tools.

### General ordering data

Type	REMOVAL TOOL HD	Version	
Order No.	<a href="#">1866730000</a>	Tools, Contact Removal Tool	
GTIN (EAN)	4032248437054		
Qty.	1 ST		

### Crimp contacts HD



Crimps provide a electrical and mechanical connection between wire and contact that is both secure and reliable. The optimal crimp connection is gas-tight and corrosion-resistant.

### General ordering data

Type	HDC-C-HD-SM0.14-0.37AG	Version	
Order No.	<a href="#">1651520000</a>	Heavy-duty connectors, Crimp contact, HD, HDD, HQ, MixMate, Male,	
GTIN (EAN)	4008190400194	Conductor cross-section, max.: 0.37, turned, Copper alloy	
Qty.	100 ST		
Type	HDC-C-HD-SM0.5AG	Version	
Order No.	<a href="#">1651530000</a>	Heavy-duty connectors, Crimp contact, HD, HDD, HQ, MixMate, Male,	
GTIN (EAN)	4008190400200	Conductor cross-section, max.: 0.5, turned, Copper alloy	
Qty.	100 ST		
Type	HDC-C-HD-SM0.75-1.00AG	Version	
Order No.	<a href="#">1601750000</a>	Heavy-duty connectors, Crimp contact, HD, HDD, HQ, MixMate, Male,	
GTIN (EAN)	4008190134280	Conductor cross-section, max.: 1, turned, Copper alloy	
Qty.	100 ST		
Type	HDC-C-HD-SM1.5AG	Version	
Order No.	<a href="#">1651550000</a>	Heavy-duty connectors, Crimp contact, HD, HDD, HQ, MixMate, Male,	
GTIN (EAN)	4008190400224	Conductor cross-section, max.: 1.5, turned, Copper alloy	
Qty.	100 ST		
Type	HDC-C-HD-SM2.5AG	Version	
Order No.	<a href="#">1651560000</a>	Heavy-duty connectors, Crimp contact, HD, HDD, HQ, MixMate, Male,	
GTIN (EAN)	4008190400231	Conductor cross-section, max.: 2.5, turned, Copper alloy	
Qty.	100 ST		

## HDC HDD 52 MC IN 1500

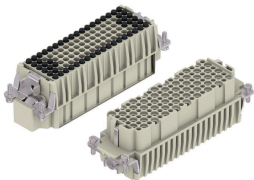
**Weidmüller Interface GmbH & Co. KG**  
 Klingenbergstraße 26  
 D-32758 Detmold  
 Germany

www.weidmueller.com

## Accessories

Type	HDC-C-HD-SM0.14-0.37AU	Version
Order No.	<a href="#">1651620000</a>	Heavy-duty connectors, Crimp contact, HD, HDD, HQ, MixMate, Male,
GTIN (EAN)	4008190400293	Conductor cross-section, max.: 0.37, turned, Copper alloy
Qty.	100 ST	
Type	HDC-C-HD-SM0.5AU	Version
Order No.	<a href="#">1651630000</a>	Heavy-duty connectors, Crimp contact, HD, HDD, HQ, MixMate, Male,
GTIN (EAN)	4008190400309	Conductor cross-section, max.: 0.5, turned, Copper alloy
Qty.	100 ST	
Type	HDC-C-HD-SM0.75-1.00AU	Version
Order No.	<a href="#">1651640000</a>	Heavy-duty connectors, Crimp contact, HD, HDD, HQ, MixMate, Male,
GTIN (EAN)	4008190400316	Conductor cross-section, max.: 1, turned, Copper alloy
Qty.	100 ST	
Type	HDC-C-HD-SM1.5AU	Version
Order No.	<a href="#">1651650000</a>	Heavy-duty connectors, Crimp contact, HD, HDD, HQ, MixMate, Male,
GTIN (EAN)	4008190400323	Conductor cross-section, max.: 1.5, turned, Copper alloy
Qty.	100 ST	
Type	HDC-C-HD-SM2.5AU	Version
Order No.	<a href="#">1651660000</a>	Heavy-duty connectors, Crimp contact, HD, HDD, HQ, MixMate, Male,
GTIN (EAN)	4008190400330	Conductor cross-section, max.: 2.5, turned, Copper alloy
Qty.	100 ST	

## Crimp connection 1500V to PE



HDD series – 10 A, 250 V, 52 poles, 1500 V to PE  
 The HDD 52 pole inserts were developed for applications requiring voltages of up to 1500 V to PE. All other rated data remain unchanged.

The HDD series with turned crimp contacts is designed for high pole counts in confined spaces. The smaller design saves users space during installation without having to limit the number of poles.

The conductor connection level is designed as a crimp contact. The proven crimp connection technology has been in use for decades. Crimp contacts are not included in the scope of delivery of the inserts.

## General ordering data

Type	HDC HDD 52 FC IN 1500	Version
Order No.	<a href="#">3150540000</a>	HDC insert, Female, 250 V, 10 A, Number of poles: 52, Crimp
GTIN (EAN)	4099987608503	connection, Installation size: 8
Qty.	1 ST	