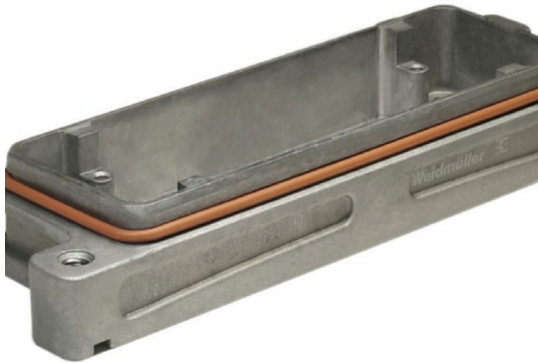


HDC 24B AS ATEX**Weidmüller Interface GmbH & Co. KG**

Klingenbergstraße 26

D-32758 Detmold

Germany

www.weidmueller.com

The option of separating cables in Zone 2 that comply with the following approvals ATEX: T II 3G Ex ec IIC T6 Gc or IECEX: Ex ec IIC T6 Gc simplifies installation, service and enables better preparation. The approved connectors offered here must always be used complete with the corresponding approved housings and inserts and may only be disconnected without load.

General ordering data

Version	HDC enclosures, Installation size: 8, Protection degree: IP55, Bulkhead housing, Clamping yoke connection, Standard
Order No.	3139930000
Type	HDC 24B AS ATEX
GTIN (EAN)	4099987382298
Qty.	1 items

HDC 24B AS ATEX

Weidmüller Interface GmbH & Co. KG

Klingenbergstraße 26

D-32758 Detmold

Germany

www.weidmueller.com

Technical data

Approvals

Approvals



Dimensions and weights

Depth	191 mm	Depth (inches)	7.5197 inch
Height	29.5 mm	Height (inches)	1.1614 inch
Width	48 mm	Width (inches)	1.8898 inch
Mounting dimension - height	32 mm	Mounting dimension - width	130 mm
Net weight	196.9 g		

Temperatures

Ambient temperature	-20 °C...40 °C	Limit temperature	-20 °C ... 80 °C
---------------------	----------------	-------------------	------------------

Environmental Product Compliance

RoHS Compliance Status	Compliant without exemption
REACH SVHC	No SVHC above 0.1 wt%

Dimensions

Width	48 mm
-------	-------

General data

Design of housing	Bulkhead housing	Installation size	8
UL 94 flammability rating	V-0	Colour	grey
Surface finish	Powder coating	Type	Bulkhead (feed-through)
Free from halogens	false	BG	8
Protection degree	IP55		

Rating data IECEx/ATEX

Certificate No. (IECEx)	TUEV24ATEX9197X	Certificate No. (ATEX)	IECEXTUR24.0077X
-------------------------	-----------------	------------------------	------------------

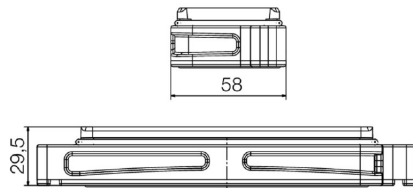
Version

Installation size	8	Surface finish	Powder coating
BG	8		

Classifications

ETIM 8.0	EC000437	ETIM 9.0	EC000437
ETIM 10.0	EC000437	ECLASS 14.0	27-44-02-02
ECLASS 15.0	27-44-02-02		

Drawings



HDC 24B AS ATEX

Weidmüller Interface GmbH & Co. KG

Klingenbergstraße 26

D-32758 Detmold

Germany

www.weidmueller.com

Accessories

Size 8 (24B)

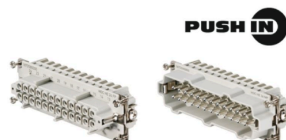


The option of separating cables in Zone 2 that comply with the following approvals ATEX: T II 3G Ex ec IIC T6 Gc or IECEX: Ex ec IIC T6 Gc simplifies installation, service and enables better preparation. The approved connectors offered here must always be used complete with the corresponding approved housings and inserts and may only be disconnected without load.

General ordering data

Type	HDC 24B TOS 1M32G ATEX	Version
Order No.	3140010000	HDC enclosures, Installation size: 8, Protection degree: IP55, Plug
GTIN (EAN)	4099987382373	housing, Clamping yoke connection, Standard
Qty.	1 ST	
Type	HDC 24B TSS 1M32G ATEX	Version
Order No.	3140030000	HDC enclosures, Installation size: 8, Protection degree: IP55, Plug
GTIN (EAN)	4099987382397	housing, Clamping yoke connection, Standard
Qty.	1 ST	
Type	HDC 24B TSS 1M40G ATEX	Version
Order No.	3140040000	HDC enclosures, Installation size: 8, Protection degree: IP55, Plug
GTIN (EAN)	4099987382403	housing, Clamping yoke connection, Standard, Size of cable entries:
Qty.	1 ST	M 40

Size 8



The PUSH IN connection is a direct-insert method of connection. The preprocessed wire can be inserted directly into the wire connection without the need for any tools.

Number of poles: 24

Rated current: 16 A

Rated voltage: 500 V

Nominal voltage acc. to UL/CSA: 600 V AC/DC

General ordering data

Type	HDC HE 24 FP	Version
Order No.	1873580000	HDC insert, Female, 500 V, 16 A, Number of poles: 24, PUSH IN,
GTIN (EAN)	4032248458196	Installation size: 8
Qty.	1 ST	
Type	HDC HE 24 MP	Version
Order No.	1873590000	HDC insert, Male, 500 V, 16 A, Number of poles: 24, PUSH IN,
GTIN (EAN)	4032248458202	Installation size: 8
Qty.	1 ST	

HDC 24B AS ATEX

Weidmüller Interface GmbH & Co. KG
 Klingenbergstraße 26
 D-32758 Detmold
 Germany

www.weidmueller.com

Accessories

Size 8 (24B)



The option of separating cables in Zone 2 that comply with the following approvals ATEX: T II 3G Ex ec IIC T6 Gc or IECEX: Ex ec IIC T6 Gc simplifies installation, service and enables better preparation. The approved connectors offered here must always be used complete with the corresponding approved housings and inserts and may only be disconnected without load.

General ordering data

Type	HDC 24B COVER ATEX	Version
Order No.	3140080000	HDC enclosures, Installation size: 8, Protection degree: IP55, Cover for
GTIN (EAN)	4099987382441	lower part of housing, Clamping yoke connection, Standard
Qty.	1 ST	

Size 8



The option of separating cables in Zone 2 that comply with the following approvals ATEX: T II 3G Ex ec IIC T6 Gc or IECEX: Ex ec IIC T6 Gc simplifies installation, service and enables better preparation. The approved connectors offered here must always be used complete with the corresponding approved housings and inserts and may only be disconnected without load.

General ordering data

Type	HDC HDD 48 FC EX 1500	Version
Order No.	3116690000	HDC insert, Female, 1500 V, Number of poles: 48, Crimp connection,
GTIN (EAN)	4099987235914	Installation size: 8
Qty.	1 ST	
Type	HDC HDD 48 MC EX 1500	Version
Order No.	3116670000	HDC insert, Male, 1500 V, Number of poles: 48, Crimp connection,
GTIN (EAN)	4099987235792	Installation size: 8
Qty.	1 ST	
Type	HDC HDD 56 FC EX 1000	Version
Order No.	3116680000	HDC insert, Female, 1000 V, Number of poles: 56, Crimp connection,
GTIN (EAN)	4099987235907	Installation size: 8
Qty.	1 ST	
Type	HDC HDD 56 MC EX 1000	Version
Order No.	3116660000	HDC insert, Male, 1000 V, Number of poles: 56, Crimp connection,
GTIN (EAN)	4099987235785	Installation size: 8
Qty.	1 ST	