

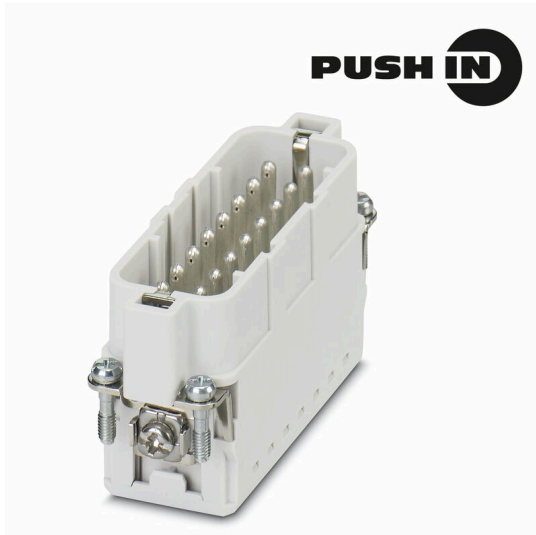
HDC HA 16 MP 17-32**Weidmüller Interface GmbH & Co. KG**

Klingenbergstraße 26

D-32758 Detmold

Germany

www.weidmueller.com



PUSH IN connection technology is a direct plug-in technology. The pre-treated conductor can be plugged directly into the conductor connection level without additional aids.

Number of poles: 4 - 48

Rated current: 10 A

Rated voltage 400 V

Nominal voltage acc. to UL/CSA: 600 V AC/DC

PUSH IN technology

General ordering data

Version	, Male, 250 V, 16 A, Number of poles: 16, PUSH IN with actuator, Installation size: 5
Order No.	3124570000
Type	HDC HA 16 MP 17-32
GTIN (EAN)	4099987277624
Qty.	1 items

Technical data

Approvals

Approvals



ROHS	Conform
UL File Number Search	UL Website
Certificate No. (UR)	E92202
Certificate No. (cURus)	E310075

Dimensions and weights

Height	35 mm	Height (inches)	1.378 inch
Width	23 mm	Width (inches)	0.9055 inch
Length	72 mm	Length (inches)	2.8346 inch
Net weight	14 g		

Temperatures

Limit temperature	-40 °C ... 125 °C
-------------------	-------------------

Environmental Product Compliance

RoHS Compliance Status	Compliant without exemption	
REACH SVHC	No SVHC above 0.1 wt%	
Chemical resistance	Substance	Acetone
	Chemical resistance	Resistant
	Substance	Ammonia, watery
	Chemical resistance	Conditionally resistant
	Substance	Petrol
	Chemical resistance	Resistant
	Substance	Benzene
	Chemical resistance	Resistant
	Substance	Diesel oil
	Chemical resistance	Conditionally resistant
	Substance	Acetic acid, concentrated
	Chemical resistance	Resistant
	Substance	Potassium hydroxide
	Chemical resistance	Conditionally resistant
	Substance	Methanol
	Chemical resistance	Conditionally resistant
	Substance	Motor oil
Chemical resistance	Conditionally resistant	
Substance	Lye, diluted	
Chemical resistance	Resistant	
Substance	Hydrochlorofluorocarbons	
Chemical resistance	Conditionally resistant	
Substance	Outdoor use	
Chemical resistance	Conditionally resistant	

Dimensions

Width	23 mm	Total length base	72 mm
-------	-------	-------------------	-------

HDC HA 16 MP 17-32

Weidmüller Interface GmbH & Co. KG
 Klingenbergstraße 26
 D-32758 Detmold
 Germany

www.weidmueller.com

Technical data

General data

Number of poles	16	Plugging cycles, silver	≥ 500
Plugging cycles, gold	≥ 500	Plugging cycles, tin	≥ 500
Type of connection	PUSH IN with actuator	Installation size	5
UL 94 flammability rating	V-0	Colour	Light Grey
Insulating material	PC	Tightening torque, max. PE connection	1 Nm
Plugging cycles	≥ 500	Type	Male
Surge voltage category	III	Pollution severity	3
Tightening torque, min. PE connection	0.5 Nm	Basic material	Polycarbonate
Series	HA	Rated voltage (DIN EN 61984)	250 V
Rated impulse voltage (DIN EN 61984)	4 kV	Rated current (DIN EN 61984)	16 A
Free from halogens	false	BG	5
Number of signal contacts	0	Number of power contacts	16
Protection degree	IP20		

Connection data PE

Connection type PE	PUSH IN connection	Tightening torque, max. PE connection	1 Nm
Tightening torque, min. PE connection	0.5 Nm		

Power contact

Tightening torque, max. according to the conductor cross-section	Conductor cross-section, min.	0.14 mm ²
	Conductor cross-section, max.	2.5 mm ²
	Tightening torque, max.	1 Nm
Stripping length according to the cable diameter	Stripping length	8.00 mm

Signal contact

Rated impulse voltage (DIN EN 61984), 4 kV signal	
---	--

Version

Wire connection cross section AWG, max.	AWG 26	Stripping length, rated connection	8 mm
Type of connection	PUSH IN with actuator	Installation size	5
Wire connection cross section AWG, min.	AWG 14	Conductor cross-section, max.	0.14 mm ²
Conductor cross-section, min.	2.5 mm ²	Basic material	Polycarbonate
BG	5		

Classifications

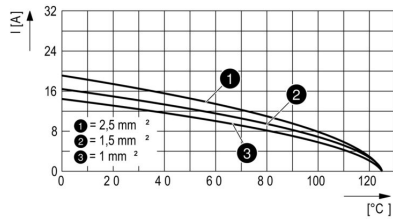
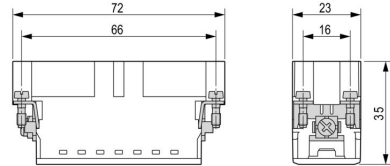
ETIM 8.0	EC000438	ETIM 9.0	EC000438
ETIM 10.0	EC000438	ECLASS 14.0	27-44-02-05
ECLASS 15.0	27-44-02-05		

HDC HA 16 MP 17-32

Weidmüller Interface GmbH & Co. KG
Klingenbergstraße 26
D-32758 Detmold
Germany

Drawings

www.weidmueller.com



HDC HA 16 MP 17-32

Weidmüller Interface GmbH & Co. KG
Klingenbergstraße 26
D-32758 Detmold
Germany

Accessories

www.weidmueller.com

DSTV

Various accessories are available for our inserts. This includes coding elements for the inserts.

General ordering data

Type	DSTV COST4	Version
Order No.	1471300000	Heavy-duty connectors, Accessories, Coding System
GTIN (EAN)	4008190017354	
Qty.	100 ST	
Type	DSTV COBU5	Version
Order No.	1471500000	Heavy-duty connectors, Accessories, Coding element
GTIN (EAN)	4008190178543	
Qty.	100 ST	