

**HDC HDD 32 FC EX 1000****Weidmüller Interface GmbH & Co. KG**

Klingenbergstraße 26

D-32758 Detmold

Germany

[www.weidmueller.com](http://www.weidmueller.com)

The option of separating cables in Zone 2 that comply with the following approvals ATEX: T II 3G Ex ec IIC T6 Gc or IECEX: Ex ec IIC T6 Gc simplifies installation, service and enables better preparation. The approved connectors offered here must always be used complete with the corresponding approved housings and inserts and may only be disconnected without load.

**General ordering data**

Version	HDC insert, Female, 1000 V, Number of poles: 32, Crimp connection, Installation size: 6
Order No.	<a href="#">3116640000</a>
Type	HDC HDD 32 FC EX 1000
GTIN (EAN)	4099987235761
Qty.	1 items

## HDC HDD 32 FC EX 1000

Weidmüller Interface GmbH &amp; Co. KG

Klingenbergstraße 26

D-32758 Detmold

Germany

www.weidmueller.com

## Technical data

## Approvals

Approvals



UL File Number Search

[UL Website](#)

Certificate No. (cURus)

E92202

## Dimensions and weights

Depth	34 mm	Depth (inches)	1.3386 inch
Width	84 mm	Width (inches)	3.3071 inch
Net weight	72.5 g		

## Temperatures

Limit temperature -20 °C ... 80 °C

## Environmental Product Compliance

RoHS Compliance Status

Compliant without exemption

REACH SVHC

No SVHC above 0.1 wt%

Chemical resistance

Substance	Acetone
Chemical resistance	Resistant
Substance	Ammonia, watery
Chemical resistance	Conditionally resistant
Substance	Petrol
Chemical resistance	Resistant
Substance	Benzene
Chemical resistance	Resistant
Substance	Diesel oil
Chemical resistance	Conditionally resistant
Substance	Acetic acid, concentrated
Chemical resistance	Resistant
Substance	Potassium hydroxide
Chemical resistance	Conditionally resistant
Substance	Methanol
Chemical resistance	Conditionally resistant
Substance	Motor oil
Chemical resistance	Conditionally resistant
Substance	Lye, diluted
Chemical resistance	Resistant
Substance	Hydrochlorofluorocarbons
Chemical resistance	Conditionally resistant
Substance	Outdoor use
Chemical resistance	Conditionally resistant

## Dimensions

Width 84 mm

## General data

Number of poles	32	Type of connection	Crimp connection
Installation size	6	UL 94 flammability rating	V-0

## HDC HDD 32 FC EX 1000

Weidmüller Interface GmbH &amp; Co. KG

Klingenbergstraße 26

D-32758 Detmold

Germany

www.weidmueller.com

## Technical data

Colour	grey	Insulating material	Polycarbonate
Type	Female	Series	HDD
Rated voltage (DIN EN 61984)	1000 V	Free from halogens	false
BG	6	Protection degree	IP55

## Rating data IECEx/ATEX

Certificate No. (IECEX)	TUEV24ATEX9197X	Current (IECEX)	3 A
Current (ATEX)	3 A	Certificate No. (ATEX)	IEEXTUR24.0077X
Wire cross section max. (IECEX)	2.5 mm <sup>2</sup>	Max. voltage (ATEX)	250 V
Wire cross section max. (ATEX)	2.5 mm <sup>2</sup>	Max. voltage (IECEX)	250 V

## Connection data PE

Connection type PE	Crimp connection
--------------------	------------------

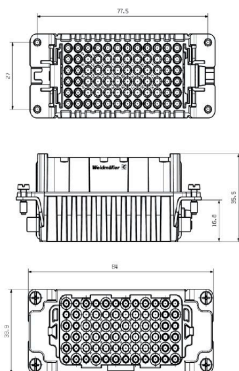
## Version

Stripping length, rated connection	8 mm	Type of connection	Crimp connection
Installation size	6	Conductor cross-section, max.	2.5 mm <sup>2</sup>
Conductor cross-section, min.	0.5 mm <sup>2</sup>	BG	6

## Classifications

ETIM 8.0	EC000438	ETIM 9.0	EC000438
ETIM 10.0	EC000438	ECLASS 14.0	27-44-02-05
ECLASS 15.0	27-44-02-05		

**Drawings**



## HDC HDD 32 FC EX 1000

**Weidmüller Interface GmbH & Co. KG**  
 Klingenbergstraße 26  
 D-32758 Detmold  
 Germany

[www.weidmueller.com](http://www.weidmueller.com)

## Accessories

## DSTV



Various accessories are available for our inserts. This includes coding elements for the inserts.

## General ordering data

Type	DSTV COBU5	Version
Order No.	<a href="#">1471500000</a>	Heavy-duty connectors, Accessories, Coding element
GTIN (EAN)	4008190178543	
Qty.	100 ST	
Type	DSTV COST4	Version
Order No.	<a href="#">1471300000</a>	Heavy-duty connectors, Accessories, Coding System
GTIN (EAN)	4008190017354	
Qty.	100 ST	

## Crimp contacts HD



Crimps provide a electrical and mechanical connection between wire and contact that is both secure and reliable. The optimal crimp connection is gas-tight and corrosion-resistant.

## General ordering data

Type	HDC-C-HD-BM0.14-0.37AG	Version
Order No.	<a href="#">1651570000</a>	Heavy-duty connectors, Crimp contact, HD, HDD, HQ, MixMate, Female, Conductor cross-section, max.: 0.37, turned, Copper alloy
GTIN (EAN)	4008190400248	
Qty.	100 ST	
Type	HDC-C-HD-BM0.14-0.37AU	Version
Order No.	<a href="#">1651670000</a>	Heavy-duty connectors, Crimp contact, HD, HDD, HQ, MixMate, Female, Conductor cross-section, max.: 0.37, turned, Copper alloy
GTIN (EAN)	4008190400347	
Qty.	100 ST	
Type	HDC-C-HD-BM0.5AG	Version
Order No.	<a href="#">1651580000</a>	Heavy-duty connectors, Crimp contact, HD, HDD, HQ, MixMate, Female, Conductor cross-section, max.: 0.5, turned, Copper alloy
GTIN (EAN)	4008190400255	
Qty.	100 ST	
Type	HDC-C-HD-BM0.5AU	Version
Order No.	<a href="#">1651680000</a>	Heavy-duty connectors, Crimp contact, HD, HDD, HQ, MixMate, Female, Conductor cross-section, max.: 0.5, turned, Copper alloy
GTIN (EAN)	4008190400354	
Qty.	100 ST	

## HDC HDD 32 FC EX 1000

**Weidmüller Interface GmbH & Co. KG**  
 Klingenbergstraße 26  
 D-32758 Detmold  
 Germany

www.weidmueller.com

## Accessories

Type	HDC-C-HD-BM0.75-1.00AG	Version
Order No.	<a href="#">1601760000</a>	Heavy-duty connectors, Crimp contact, HD, HDD, HQ, MixMate,
GTIN (EAN)	4008190158354	Female, Conductor cross-section, max.: 1, turned, Copper alloy
Qty.	100 ST	
Type	HDC-C-HD-BM0.75-1.00AU	Version
Order No.	<a href="#">1651690000</a>	Heavy-duty connectors, Crimp contact, HD, HDD, HQ, MixMate,
GTIN (EAN)	4008190400361	Female, Conductor cross-section, max.: 1, turned, Copper alloy
Qty.	100 ST	
Type	HDC-C-HD-BM1.5AG	Version
Order No.	<a href="#">1651600000</a>	Heavy-duty connectors, Crimp contact, HD, HDD, HQ, MixMate,
GTIN (EAN)	4008190400279	Female, Conductor cross-section, max.: 1.5, turned, Copper alloy
Qty.	100 ST	
Type	HDC-C-HD-BM1.5AU	Version
Order No.	<a href="#">1651700000</a>	Heavy-duty connectors, Crimp contact, HD, HDD, HQ, MixMate,
GTIN (EAN)	4008190400378	Female, Conductor cross-section, max.: 1.5, turned, Copper alloy
Qty.	100 ST	
Type	HDC-C-HD-BM2.5AG	Version
Order No.	<a href="#">1651610000</a>	Heavy-duty connectors, Crimp contact, HD, HDD, HQ, MixMate,
GTIN (EAN)	4008190400286	Female, Conductor cross-section, max.: 2.5, turned, Copper alloy
Qty.	100 ST	
Type	HDC-C-HD-BM2.5AU	Version
Order No.	<a href="#">1651710000</a>	Heavy-duty connectors, Crimp contact, HD, HDD, HQ, MixMate,
GTIN (EAN)	4008190400385	Female, Conductor cross-section, max.: 2.5, turned, Copper alloy
Qty.	100 ST	

## Size 6 (16B)



The option of separating cables in Zone 2 that comply with the following approvals ATEX: T II 3G Ex ec IIC T6 Gc or IECEX: Ex ec IIC T6 Gc simplifies installation, service and enables better preparation. The approved connectors offered here must always be used complete with the corresponding approved housings and inserts and may only be disconnected without load.

## General ordering data

Type	HDC 16B AS ATEX	Version
Order No.	<a href="#">3139920000</a>	HDC enclosures, Installation size: 6, Protection degree: IP55, Bulkhead
GTIN (EAN)	4099987382281	housing, Clamping yoke connection, Standard
Qty.	1 ST	
Type	HDC 16B SS 1M32G ATEX	Version
Order No.	<a href="#">3139870000</a>	HDC enclosures, Installation size: 6, Protection degree: IP55, Base
GTIN (EAN)	4099987382236	housing, Clamping yoke connection, Standard
Qty.	1 ST	
Type	HDC 16B TOS 1M32G ATEX	Version
Order No.	<a href="#">3139980000</a>	HDC enclosures, Installation size: 6, Protection degree: IP55, Plug
GTIN (EAN)	4099987382342	housing, Clamping yoke connection, Standard, Size of cable entries:
Qty.	1 ST	M 32

## HDC HDD 32 FC EX 1000

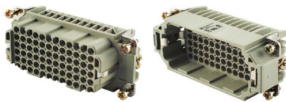
**Weidmüller Interface GmbH & Co. KG**  
 Klingenbergstraße 26  
 D-32758 Detmold  
 Germany

www.weidmueller.com

## Accessories

Type	HDC 16B TOS 2M25G ATEX	Version
Order No.	<a href="#">3139990000</a>	HDC enclosures, Installation size: 6, Protection degree: IP55, Plug
GTIN (EAN)	4099987382359	housing, Clamping yoke connection, Standard, Size of cable entries:
Qty.	1 ST	M 32, M 25
Type	HDC 16B TSS 1M32G ATEX	Version
Order No.	<a href="#">3140000000</a>	HDC enclosures, Installation size: 6, Protection degree: IP55, Plug
GTIN (EAN)	4099987382366	housing, Clamping yoke connection, Standard, Size of cable entries:
Qty.	1 ST	M 32

## Size 6



The HDD series with machined crimp contacts is designed for high pole counts in tight spaces. Users save installation space with the smaller design, without having to limit the number of poles.

The wire connection level is designed as a crimp contact. The established crimp connection has been used as a standard for decades. Crimp contacts are not delivered with the inserts.

Number of poles: 72

Rated current: 10 A

Rated voltage: 250 V

Nominal voltage acc. to UL/CSA: 600 V AC/DC

## General ordering data

Type	HDC HDD 72 MC	Version
Order No.	<a href="#">1651190000</a>	HDC insert, Male, 250 V, 10 A, Number of poles: 72, Crimp
GTIN (EAN)	4008190299798	connection, Installation size: 6
Qty.	1 ST	
Type	HDC HDD 24 MC EX 1500	Version
Order No.	<a href="#">3116630000</a>	HDC insert, Male, 1500 V, Number of poles: 24, Crimp connection,
GTIN (EAN)	4099987235754	Installation size: 6
Qty.	1 ST	