

HDMI A S1V 1.9N1 RL

Weidmüller Interface GmbH & Co. KG

Klingenbergstraße 26

D-32758 Detmold

Germany

www.weidmueller.com



HDMI sockets for PCBs - reliable connectivity for your electronics projects

HDMI sockets from Weidmüller offer a high-quality solution for the transmission of video, audio and Ethernet signals (HEC) in industrial applications

Features and benefits:

- **Compact design:** Ideal for space-saving PCB designs thanks to various outlet directions
- **High data transmission rate:** Supports HDMI 2.0 and 4K resolutions and Ethernet up to 100 Mbit/s
- **Easy integration:** Standardized design facilitates mounting and integration into the device
- **EMC protection:** Reliable protection against interference for clean data transmission
- **Perfectly suited for processing in automated SMT processes** thanks to tape-on-reel packaging
- **Durability:** Robust design ensures a reliability in demanding environments

General ordering data

Version	, female header, 100 MBit/s, SMD solder connection, 180°, Plugging cycles: ≥ 10000, Number of poles: 5, LCP, Gold over nickel, Tape
Order No.	3107660000
Type	HDMI A S1V 1.9N1 RL
GTIN (EAN)	4099987174633
Qty.	1600 items
Packaging	Tape

HDMI A S1V 1.9N1 RL

Weidmüller Interface GmbH & Co. KG

Klingenbergstraße 26
D-32758 Detmold
Germany

www.weidmueller.com

Technical data

Approvals

ROHS	Conform
------	---------

Dimensions and weights

Depth	6.2 mm	Depth (inches)	0.2441 inch
Height	15 mm	Height (inches)	0.5906 inch
Width	15 mm	Width (inches)	0.5906 inch
Net weight	0.01 g		

Environmental Product Compliance

RoHS Compliance Status	Compliant without exemption
REACH SVHC	No SVHC above 0.1 wt%

System specifications

Number of poles	5	LED	No
Mounting onto the PCB	SMD solder connection	Pitch in inches (P)	0.020 "
Shielding material	Stainless steel	Shielding	Yes, 360° shield contact
Plugging force/pole, max.	35 N	Transmission rate	100 MBit/s
Number of solder pins per pole	1	Type of connection	Socket connector
Pitch in mm (P)	0.50 mm	Protection degree	IP20
Plugging cycles	≥ 10000	Model	Socket connector
Outgoing elbow	180°	Shield surface	nickel-plated
Performance-Category	100 MBit/s	Soldering process	Reflow soldering, Manual soldering
Pulling force / pole, min.	10.00 N	Solder pin dimensions	Octagonal

Electrical properties

Dielectric strength, contact / contact	500 V AC / 1 min	Volume resistance	≤10 mΩ
Insulation resistance	≥ 100 MΩ		

Material data

Insulating material	LCP	Colour	black
Colour chart (similar)	RAL 9011	Insulation resistance	≥ 100 MΩ
Moisture Level (MSL)	1	UL 94 flammability rating	V-0
Contact base material	Copper alloy	Contact material	Cu-alloy
Contact surface	Gold over nickel	Layer structure of plug contact	≤ 1 μ" Au
Storage temperature, min.	-20 °C	Storage temperature, max.	65 °C
Operating temperature, min.	-20 °C	Operating temperature, max.	65 °C

Packing

Packaging	Tape	VPE length	0.00 mm
VPE width	0.00 mm	VPE height	0.00 mm

Important note

Notes

HDMI A S1V 1.9N1 RL

Weidmüller Interface GmbH & Co. KG
Klingenbergstraße 26
D-32758 Detmold
Germany

www.weidmueller.com

Technical data

Classifications

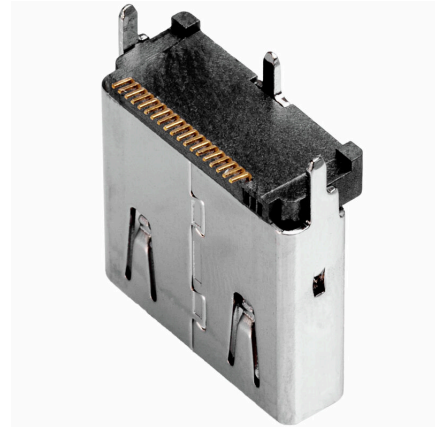
ETIM 8.0	EC002637	ETIM 9.0	EC002637
ETIM 10.0	EC002637	ECLASS 14.0	27-46-02-01
ECLASS 15.0	27-46-02-01		

HDMI A S1V 1.9N1 RL

Weidmüller Interface GmbH & Co. KG
Klingenbergstraße 26
D-32758 Detmold
Germany

Drawings

www.weidmueller.com



HDMI A S1V 1.9N1 RL

Weidmüller Interface GmbH & Co. KG
 Klingenbergstraße 26
 D-32758 Detmold
 Germany

Drawings

www.weidmueller.com

