

**HDMI A S1H 2.0N1 RL****Weidmüller Interface GmbH & Co. KG**Klingenbergstraße 26  
D-32758 Detmold  
Germany

www.weidmueller.com



HDMI sockets for PCBs - reliable connectivity for your electronics projects

HDMI sockets from Weidmüller offer a high-quality solution for the transmission of video, audio and Ethernet signals (HEC) in industrial applications

Features and benefits:

- Compact design: Ideal for space-saving PCB designs thanks to various outlet directions
- High data transmission rate: Supports HDMI 2.0 and 4K resolutions and Ethernet up to 100 Mbit/s
- Easy integration: Standardized design facilitates mounting and integration into the device
- EMC protection: Reliable protection against interference for clean data transmission
- Perfectly suited for processing in automated SMT processes thanks to tape-on-reel packaging
- Durability: Robust design ensures a reliability in demanding environments

**General ordering data**

Version	, HDMI 2.0, female header, SMD solder connection, 90°, Plugging cycles: ≥ 10000, Number of poles: 19, LCP, Gold over nickel, Reel
Order No.	<a href="#">3107650000</a>
Type	HDMI A S1H 2.0N1 RL
GTIN (EAN)	4099987174541
Qty.	3000 items
Packaging	Reel

## HDMI A S1H 2.0N1 RL

Weidmüller Interface GmbH &amp; Co. KG

Klingenbergstraße 26

D-32758 Detmold

Germany

www.weidmueller.com

## Technical data

## Approvals

ROHS	Conform
------	---------

## Dimensions and weights

Depth	11.55 mm	Depth (inches)	0.4547 inch
Height	6.18 mm	Height (inches)	0.2433 inch
Width	15 mm	Width (inches)	0.5906 inch
Net weight	0 g		

## Environmental Product Compliance

RoHS Compliance Status	Compliant without exemption
REACH SVHC	No SVHC above 0.1 wt%

## System specifications

Number of poles	19	LED	No
Mounting onto the PCB	SMD solder connection	Pitch in inches (P)	0.020 "
Shielding material	Copper alloy	Shielding	Yes
Side termination, characteristic	Solder flange	Number of solder pins per pole	1
Type of connection	Solder connection	Pitch in mm (P)	0.50 mm
Protection degree	IP20	Plugging cycles	≥ 10000
Outgoing elbow	90°	Shield surface	nickel-plated
Shield tabs	none	Soldering process	Reflow soldering, Manual soldering

## Electrical properties

Dielectric strength, contact / contact	500 V AC / 1 min	Insulation resistance	≥ 100 MΩ
Nominal voltage	0.5 V		

## Material data

Insulating material	LCP	Colour	black
Colour chart (similar)	RAL 9011	Insulation resistance	≥ 100 MΩ
Moisture Level (MSL)	1	UL 94 flammability rating	V-0
Contact base material	Copper alloy	Contact material	Copper alloy
Contact surface	Gold over nickel	Storage temperature, min.	-20 °C
Storage temperature, max.	65 °C	Operating temperature, min.	-20 °C
Operating temperature, max.	65 °C		

## Packing

Packaging	Reel	VPE length	0.00 mm
VPE width	0.00 mm	VPE height	0.00 mm

## Important note

Notes

## Classifications

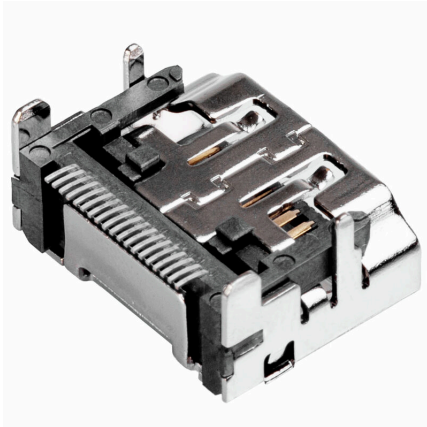
ETIM 8.0	EC002637	ETIM 9.0	EC002637
ETIM 10.0	EC002637	ECLASS 14.0	27-46-02-01
ECLASS 15.0	27-46-02-01		

**HDMI A S1H 2.0N1 RL**

**Weidmüller Interface GmbH & Co. KG**  
Klingenbergstraße 26  
D-32758 Detmold  
Germany

**Drawings**

[www.weidmueller.com](http://www.weidmueller.com)

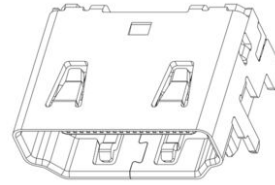
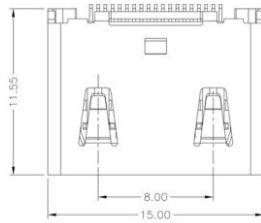


HDMI A S1H 2.0N1 RL

Weidmüller Interface GmbH & Co. KG  
 Klingenbergstraße 26  
 D-32758 Detmold  
 Germany

Drawings

www.weidmueller.com



3D View

