

HDMI A S1H 2.0N1 RL

Weidmüller Interface GmbH & Co. KG

Klingenbergstraße 26

D-32758 Detmold

Germany

www.weidmueller.com



HDMI sockets for PCBs - reliable connectivity for your electronics projects

HDMI sockets from Weidmüller offer a high-quality solution for the transmission of video, audio and Ethernet signals (HEC) in industrial applications

Features and benefits:

- **Compact design:** Ideal for space-saving PCB designs thanks to various outlet directions
- **High data transmission rate:** Supports HDMI 2.0 and 4K resolutions and Ethernet up to 100 Mbit/s
- **Easy integration:** Standardized design facilitates mounting and integration into the device
- **EMC protection:** Reliable protection against interference for clean data transmission
- **Perfectly suited for processing in automated SMT processes** thanks to tape-on-reel packaging
- **Durability:** Robust design ensures a reliability in demanding environments

General ordering data

Version	, HDMI 2.0, female header, SMD solder connection, 90°, Plugging cycles: ≥ 10000, Number of poles: 19, LCP, Gold over nickel, Reel
Order No.	3107650000
Type	HDMI A S1H 2.0N1 RL
GTIN (EAN)	4099987174541
Qty.	3000 items
Packaging	Reel

HDMI A S1H 2.0N1 RL

Weidmüller Interface GmbH & Co. KG

Klingenbergstraße 26

D-32758 Detmold

Germany

www.weidmueller.com

Technical data

Approvals

ROHS	Conform
------	---------

Dimensions and weights

Depth	11.55 mm	Depth (inches)	0.4547 inch
Height	6.18 mm	Height (inches)	0.2433 inch
Width	15 mm	Width (inches)	0.5906 inch
Net weight	0 g		

Environmental Product Compliance

RoHS Compliance Status	Compliant without exemption
REACH SVHC	No SVHC above 0.1 wt%

System specifications

Number of poles	19	LED	No
Mounting onto the PCB	SMD solder connection	Pitch in inches (P)	0.020 "
Shielding material	Copper alloy	Shielding	Yes
Side termination, characteristic	Solder flange	Number of solder pins per pole	1
Type of connection	Solder connection	Pitch in mm (P)	0.50 mm
Protection degree	IP20	Plugging cycles	≥ 10000
Outgoing elbow	90°	Shield surface	nickel-plated
Shield tabs	none	Soldering process	Reflow soldering, Manual soldering

Electrical properties

Dielectric strength, contact / contact	500 V AC / 1 min	Insulation resistance	≥ 100 MΩ
Nominal voltage	0.5 V		

Material data

Insulating material	LCP	Colour	black
Colour chart (similar)	RAL 9011	Insulation resistance	≥ 100 MΩ
Moisture Level (MSL)	1	UL 94 flammability rating	V-0
Contact base material	Copper alloy	Contact material	Copper alloy
Contact surface	Gold over nickel	Storage temperature, min.	-20 °C
Storage temperature, max.	65 °C	Operating temperature, min.	-20 °C
Operating temperature, max.	65 °C		

Packing

Packaging	Reel	VPE length	0.00 mm
VPE width	0.00 mm	VPE height	0.00 mm

Important note

Notes

Classifications

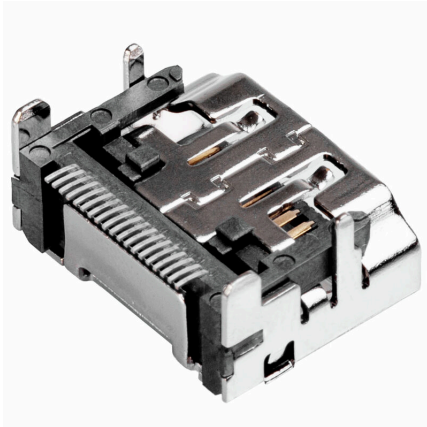
ETIM 8.0	EC002637	ETIM 9.0	EC002637
ETIM 10.0	EC002637	ECLASS 14.0	27-46-02-01
ECLASS 15.0	27-46-02-01		

HDMI A S1H 2.0N1 RL

Weidmüller Interface GmbH & Co. KG
Klingenbergstraße 26
D-32758 Detmold
Germany

Drawings

www.weidmueller.com

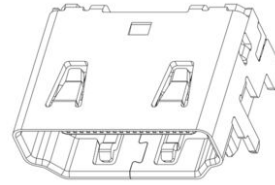
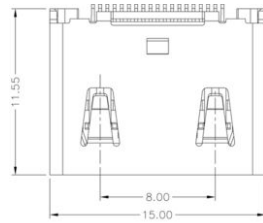


HDMI A S1H 2.0N1 RL

Weidmüller Interface GmbH & Co. KG
 Klingenbergstraße 26
 D-32758 Detmold
 Germany

Drawings

www.weidmueller.com



3D View

