

**HDC 06B ABU BP****Weidmüller Interface GmbH & Co. KG**

Klingenbergstraße 26

D-32758 Detmold

Germany

[www.weidmueller.com](http://www.weidmueller.com)

Plastic enclosures are particularly suitable for applications where the resistance of metals is not sufficient. In addition, the enclosures shown here are lighter and slightly cheaper than standard aluminum enclosures. It can therefore make sense to use plastic enclosures in applications where the materials do not need to be as robust. The tightness is still IP65.

**General ordering data**

Version	HDC enclosures, Installation size: 3, Protection degree: IP65, in plugged condition, Bulkhead housing, Side-locking clamp on lower side, Side-locking clamp not replaceable, Standard
Order No.	<a href="#">3107170000</a>
Type	HDC 06B ABU BP
GTIN (EAN)	4099987172066
Qty.	1 items

## HDC 06B ABU BP

Weidmüller Interface GmbH &amp; Co. KG

Klingenbergstraße 26

D-32758 Detmold

Germany

www.weidmueller.com

## Technical data

## Approvals

Approvals	CE
ROHS	Conform

## Dimensions and weights

Depth	43 mm	Depth (inches)	1.6929 inch
Height	30.6 mm	Height (inches)	1.2047 inch
Width	80 mm	Width (inches)	3.1496 inch
Length	80 mm	Length (inches)	3.1496 inch
Net weight	77 g		

## Temperatures

Limit temperature	-40 °C ... 125 °C
-------------------	-------------------

## Environmental Product Compliance

RoHS Compliance Status	Compliant without exemption
REACH SVHC	No SVHC above 0.1 wt%

## General data

UL 94 flammability rating	V-0	Housing main material	Polyamide
Protection degree	IP65, in plugged condition	EMC housings	No
Material of locking element	Polyamide		

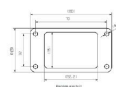
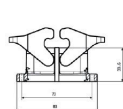
## Version

Top part/bottom part/lid	lower part	Design of housing	Bulkhead housing
Design of locking system	Side-locking clamp on lower side, Side-locking clamp not replaceable	Design	Standard
Installation size	3	Type	Bulkhead (feed-through)
Clamp version	Side-locking clamp	Sealing	NBR
Internal thread	M 32	Colour (RAL)	RAL 9005
BG	3	Suitable for ModuPlug®	Yes

## Classifications

ETIM 6.0	EC000437	ETIM 7.0	EC000437
ETIM 8.0	EC000437	ETIM 9.0	EC000437
ETIM 10.0	EC000437	ECLASS 9.0	27-44-02-02
ECLASS 9.1	27-44-02-02	ECLASS 10.0	27-44-02-02
ECLASS 11.0	27-44-02-02	ECLASS 12.0	27-44-02-02
ECLASS 13.0	27-44-02-02	ECLASS 14.0	27-44-02-02
ECLASS 15.0	27-44-02-02		

## Drawings



## HDC 06B ABU BP

Weidmüller Interface GmbH &amp; Co. KG

Klingenbergstraße 26

D-32758 Detmold

Germany

www.weidmueller.com

## Accessories

## Hood, Cable Entry sideways



Plastic enclosures are particularly suitable for applications where the resistance of metals is not sufficient. In addition, the enclosures shown here are lighter and slightly cheaper than standard aluminum enclosures. It can therefore make sense to use plastic enclosures in applications where the materials do not need to be as robust. The tightness is still IP65.

## General ordering data

Type	HDC 16D TSB 1M25 BP	Version
Order No.	<a href="#">3164350000</a>	HDC enclosures, Installation size: 3, Protection degree: IP65, in
GTIN (EAN)	4099987800563	plugged condition, Cable entry from side, Plug housing, Side-locking
Qty.	1 ST	clamp on lower side, Standard, Size of cable entries: 1*M25, M 25, M 32
Type	HDC 16D TSB 1M32 BP	Version
Order No.	<a href="#">3107180000</a>	HDC enclosures, Installation size: 3, Protection degree: IP65, in
GTIN (EAN)	4099987172080	plugged condition, Cable entry from side, Plug housing, End-locking
Qty.	1 ST	clamp, lower side, high, Size of cable entries: M 32

## Hood, Cable Entry at top



Plastic enclosures are particularly suitable for applications where the resistance of metals is not sufficient. In addition, the enclosures shown here are lighter and slightly cheaper than standard aluminum enclosures. It can therefore make sense to use plastic enclosures in applications where the materials do not need to be as robust. The tightness is still IP65.

## General ordering data

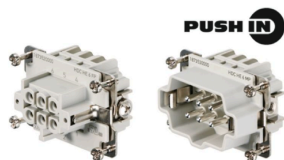
Type	HDC 16D TOB 1M25 BP	Version
Order No.	<a href="#">3164330000</a>	HDC enclosures, Installation size: 3, Protection degree: IP65, in
GTIN (EAN)	4099987800525	plugged condition, Cable entry from top, Plug housing, Side-locking
Qty.	1 ST	clamp on lower side, Standard, Size of cable entries: M 25, M 32
Type	HDC 16D TOB 1M32 BP	Version
Order No.	<a href="#">3164290000</a>	HDC enclosures, Installation size: 3, Protection degree: IP65, in
GTIN (EAN)	4099987800143	plugged condition, Cable entry from top, Plug housing, Side-locking
Qty.	1 ST	clamp on lower side, Standard, Size of cable entries: M 32

**HDC 06B ABU BP****Weidmüller Interface GmbH & Co. KG**

Klingenbergstraße 26

D-32758 Detmold

Germany

[www.weidmueller.com](http://www.weidmueller.com)**Accessories****Size 3**

The PUSH IN connection is a direct-insert method of connection. The preprocessed wire can be inserted directly into the wire connection without the need for any tools.

Number of poles: 6

Rated current: 24 A

Rated voltage: 500 V

Nominal voltage acc. to UL/CSA: 600 V AC/DC

**General ordering data**

Type	HDC HE 6 FP	Version
Order No.	<a href="#">1873520000</a>	HDC insert, Female, 500 V, 24 A, Number of poles: 6, PUSH IN,
GTIN (EAN)	4032248457779	Installation size: 3
Qty.	1 ST	
Type	HDC HE 6 MP	Version
Order No.	<a href="#">1873530000</a>	HDC insert, Male, 500 V, 24 A, Number of poles: 6, PUSH IN,
GTIN (EAN)	4032248457786	Installation size: 3
Qty.	1 ST	