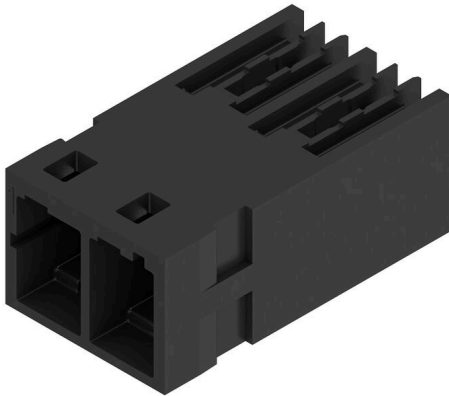


MHS 6/02 H T3 B T**Weidmüller Interface GmbH & Co. KG**Klingenbergstraße 26
D-32758 Detmold
Germany

www.weidmueller.com

Product image**General ordering data**

| | |
|--------------|--|
| Version | PCB plug-in connector, male header, THT/THR solder connection, Pitch in mm (P): 6.35 mm, Number of poles: 2, 90°, Tube |
| Order No. | 3106890000 |
| Type | MHS 6/02 H T3 B T |
| GTIN (EAN) | 4099987171168 |
| Qty. | 35 items |
| Product data | IEC: 1000 V / 32 A UL: 300 V / 30 A |
| Packaging | Tube |

MHS 6/02 H T3 B T

Weidmüller Interface GmbH & Co. KG

Klingenbergstraße 26

D-32758 Detmold

Germany

www.weidmueller.com

Technical data

Dimensions and weights

| | | | |
|--------------------------|-------------|-----------------|-------------|
| Depth | 25 mm | Depth (inches) | 0.9842 inch |
| Height | 13.4 mm | Height (inches) | 0.5276 inch |
| Height of lowest version | 10.2 mm | Width | 13.9 mm |
| Width (inches) | 0.5472 inch | Net weight | 102.62 g |

Temperatures

| | |
|---------------------|-----------------|
| Ambient temperature | -50 °C...120 °C |
|---------------------|-----------------|

Environmental Product Compliance

| | |
|------------------------|-----------------------------|
| RoHS Compliance Status | Compliant without exemption |
| REACH SVHC | No SVHC above 0.1 wt% |

System specifications

| | | | |
|--|---------------------------|--|------------------|
| Product family | OMNIMATE 4.0 | Type of connection | Board connection |
| Mounting onto the PCB | THT/THR solder connection | Pitch in mm (P) | 6.35 mm |
| Pitch in inches (P) | 0.250 " | Outgoing elbow | 90° |
| Number of poles | 2 | Number of solder pins per pole | 1 |
| Solder pin length (l) | 3.2 mm | Solder pin dimensions | 1.2 x 1.0 mm |
| Solder eyelet hole diameter (D) | 1.7 mm | Solder eyelet hole diameter tolerance (D)+ | 0,1 mm |
| Outside diameter of solder pad | 2.6 mm | Template aperture diameter | 2.4 mm |
| L1 in mm | 6.35 mm | L1 in inches | 0.250 " |
| Number of rows | 1 | Pin series quantity | 1 |
| Touch-safe protection acc. to DIN VDE 57 106 | Safe from finger touch | Touch-safe protection acc. to DIN VDE 0470 | IP 20 |
| Protection degree | IP20 | Volume resistance | ≤5 mΩ |
| Plugging cycles | ≥ 25 | Plugging force/pole, max. | 12 N |
| Pulling force/pole, max. | 10 N | | |

Material data

| | | | |
|-----------------------------|----------|----------------------------------|----------|
| Insulating material | PA 9T | Colour | black |
| Colour chart (similar) | RAL 9011 | Comparative Tracking Index (CTI) | ≤ 600 |
| Moisture Level (MSL) | 1 | UL 94 flammability rating | V-0 |
| Contact base material | CuMg | Contact material | Cu-alloy |
| Contact surface | tinned | Tinning type | matt |
| Storage temperature, min. | -40 °C | Storage temperature, max. | 70 °C |
| Operating temperature, min. | -50 °C | Operating temperature, max. | 125 °C |

Rated data acc. to IEC

| | | | |
|---|------------------------|---|--------|
| tested acc. to standard | IEC 60664-1, IEC 61984 | Rated current, min. number of poles (Tu=20°C) | 32 A |
| Rated current, max. number of poles (Tu=20°C) | 32 A | Rated current, min. number of poles (Tu=40°C) | 32 A |
| Rated current, max. number of poles (Tu=40°C) | 32 A | Rated voltage for surge voltage class / pollution degree II/2 | 1000 V |
| Rated voltage for surge voltage class / pollution degree III/2 | 800 V | Rated voltage for surge voltage class / pollution degree III/3 | 630 V |
| Rated impulse voltage for surge voltage class/ pollution degree II/2 | 6 kV | Rated impulse voltage for surge voltage class/ pollution degree III/2 | 6 kV |
| Rated impulse voltage for surge voltage class/ contamination degree III/3 | 6 kV | Creepage distance, min. | 4 mm |

MHS 6/02 H T3 B T

Weidmüller Interface GmbH & Co. KG
 Klingenbergstraße 26
 D-32758 Detmold
 Germany

www.weidmueller.com

Technical data

Rated data acc. to UL 1059

| | | | |
|---------------------------------------|--------|---------------------------------------|-------|
| Rated voltage (Use group B / UL 1059) | 300 V | Rated voltage (Use group D / UL 1059) | 600 V |
| Rated voltage (Use group F / UL 1059) | 1000 V | Rated current (Use group B / UL 1059) | 30 A |
| Rated current (Use group D / UL 1059) | 5 A | Creepage distance, min. | 4 mm |
| Clearance distance, min. | 5.5 mm | | |

Important note

- Notes
- Rated current related to rated cross-section & min. No. of poles.
 - P on drawing = pitch
 - Rated data refer only to the component itself. Clearance and creepage distances to other components are to be designed in accordance with the relevant application standards.
 - Long term storage of the product with average temperature of 50 °C and maximum humidity 70%, 36 months

Classifications

| | | | |
|-------------|-------------|-------------|-------------|
| ETIM 8.0 | EC002637 | ETIM 9.0 | EC002637 |
| ETIM 10.0 | EC002637 | ECLASS 14.0 | 27-46-02-01 |
| ECLASS 15.0 | 27-46-02-01 | | |

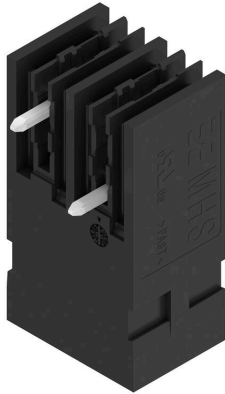
MHS 6/02 H T3 B T

Weidmüller Interface GmbH & Co. KG
Klingenbergstraße 26
D-32758 Detmold
Germany

www.weidmueller.com

Drawings

Product image



Dimensional drawing

