

HDC HQ 2 MC**Weidmüller Interface GmbH & Co. KG**

Klingenbergstraße 26

D-32758 Detmold

Germany

www.weidmueller.com



The HQ series - big features in a compact design. The electrical characteristics speak for themselves. The wire connection level is designed for crimp contacts. The proven crimp connection method has been in standard use for decades. Crimp contacts are not included in the scope of delivery of inserts.

General ordering data

Version	HDC insert, Male, 400 V, 40 A, Number of poles: 2, Crimp contact, Installation size: 1
Order No.	3103500000
Type	HDC HQ 2 MC
GTIN (EAN)	4099987151221
Qty.	1 items

HDC HQ 2 MC

Weidmüller Interface GmbH & Co. KG

Klingenbergstraße 26

D-32758 Detmold

Germany

www.weidmueller.com

Technical data

Approvals

Approvals



ROHS	Conform
UL File Number Search	UL Website
Certificate No. (UR)	E92202
Certificate No. (cURus)	E310075

Dimensions and weights

Depth	21 mm	Depth (inches)	0.8268 inch
Height	40 mm	Height (inches)	1.5748 inch
Width	23.7 mm	Width (inches)	0.9331 inch
Diameter	4 mm	Net weight	18.3 g

Environmental Product Compliance

RoHS Compliance Status	Compliant without exemption
REACH SVHC	No SVHC above 0.1 wt%

Dimensions

Width	23.7 mm	Height of plug	21 mm
-------	---------	----------------	-------

General data

Number of poles	2	Plugging cycles, silver	≥ 500
Plugging cycles, gold	≥ 500	Type of connection	Crimp contact
Installation size	1	UL 94 flammability rating	V-0
Colour	grey	Insulating material	PC
Surface finish	Miscellaneous	Plugging cycles	≥ 500
Type	Male	Surge voltage category	III
Pollution severity	3	Basic material	Polycarbonate
Series	HQ	Rated voltage (DIN EN 61984)	400 V
Rated impulse voltage (DIN EN 61984)	6 kV	Rated current (DIN EN 61984)	40 A
Free from halogens	false	BG	1
Number of signal contacts	0	Number of power contacts	2
Protection degree	IP20		

Connection data PE

Connection type PE	Crimp connection
--------------------	------------------

Power contact

Stripping length according to the cable diameter	Stripping length	9.00 mm
--	------------------	---------

Version

Type of connection	Crimp contact	Installation size	1
Conductor cross-section, max.	6 mm ²	Conductor cross-section, min.	1.5 mm ²
Surface finish	Miscellaneous	Basic material	Polycarbonate
BG	1		

Creation date 10.03.2026 01:52:15 MEZ

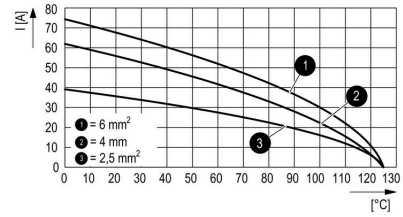
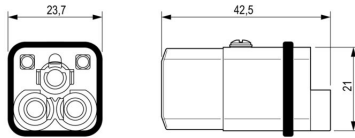
Catalogue status / Drawings

Technical data

Classifications

ETIM 8.0	EC000438	ETIM 9.0	EC000438
ETIM 10.0	EC000438	ECLASS 14.0	27-44-02-05
ECLASS 15.0	27-44-02-05		

Drawings



HDC HQ 2 MC

Weidmüller Interface GmbH & Co. KG
 Klingenbergstraße 26
 D-32758 Detmold
 Germany

www.weidmueller.com

Accessories

Slotted screwdriver



VDE insulated slot-head screwdriver, SDI DIN 7437, ISO 2380/2, drive output acc. to DIN 5264, ISO 2380/1. SoftFinish grip

General ordering data

Type	SDIS 0.5X3.0X100	Version
Order No.	9008380000	Screwdriver, Screwdriver
GTIN (EAN)	4032248056347	
Qty.	1 ST	
Type	SDS 0.5X3.0X80	Version
Order No.	9008320000	Screwdriver, Screwdriver
GTIN (EAN)	4032248056262	
Qty.	1 ST	
Type	SDIS 0.6X3.5X100	Version
Order No.	9008390000	Screwdriver, Screwdriver
GTIN (EAN)	4032248056354	
Qty.	1 ST	
Type	SDS 0.6X3.5X100	Version
Order No.	9008330000	Screwdriver, Screwdriver
GTIN (EAN)	4032248056286	
Qty.	1 ST	
Type	SDIS 0.8X4.0X100	Version
Order No.	9008400000	Screwdriver, Screwdriver
GTIN (EAN)	4032248056361	
Qty.	1 ST	
Type	SDS 0.8X4.0X100	Version
Order No.	9008340000	Screwdriver, Screwdriver
GTIN (EAN)	4032248056293	
Qty.	1 ST	

Combined screwing and cutting tool "Swifty® CS"

Combined cutting/stripping tool Swifty® CS and Swifty® CS set for crimp-free cutting and stripping of copper cables up to 1.5 mm² solid and 2.5 mm² flexible.

HDC HQ 2 MC

Weidmüller Interface GmbH & Co. KG
 Klingenbergstraße 26
 D-32758 Detmold
 Germany

www.weidmueller.com

Accessories

General ordering data

Type	SWIFTY CS SET	Version
Order No.	9006060000	Cutting and screwing-tool, Cutting tool for one-hand operation
GTIN (EAN)	4032248257638	
Qty.	1 ST	

Crimp contacts HX



Crimps provide a electrical and mechanical connection between wire and contact that is both secure and reliable. The optimal crimp connection is gas-tight and corrosion-resistant.

General ordering data

Type	HDC C HX BM1.5AG	Version
Order No.	1002950000	Heavy-duty connectors, Crimp contact, MixMate, Female, Conductor
GTIN (EAN)	4032248697236	cross-section, max.: 1.5, turned, Copper alloy
Qty.	25 ST	
Type	HDC C HX BM10.0AG	Version
Order No.	1526190000	Heavy-duty connectors, Crimp contact, HQ, Female, Conductor cross-
GTIN (EAN)	4050118332087	section, max.: 8, turned, Copper alloy
Qty.	25 ST	
Type	HDC C HX BM2.5AG	Version
Order No.	1002960000	Heavy-duty connectors, Crimp contact, MixMate, Female, Conductor
GTIN (EAN)	4032248697243	cross-section, max.: 2.5, turned, Copper alloy
Qty.	25 ST	
Type	HDC C HX BM4.0AG	Version
Order No.	1002970000	Heavy-duty connectors, Crimp contact, HQ, MixMate, Female,
GTIN (EAN)	4032248697250	Conductor cross-section, max.: 4, turned, Copper alloy
Qty.	25 ST	
Type	HDC C HX BM6.0AG	Version
Order No.	1002980000	Heavy-duty connectors, Crimp contact, MixMate, Female, Conductor
GTIN (EAN)	4032248697267	cross-section, max.: 6, turned, Copper alloy
Qty.	25 ST	
Type	HDC C HX SM1.5AG	Version
Order No.	1002910000	Heavy-duty connectors, Crimp contact, MixMate, Male, Conductor
GTIN (EAN)	4032248697090	cross-section, max.: 1.5, turned, Copper alloy
Qty.	25 ST	
Type	HDC C HX SM10.0AG	Version
Order No.	1526150000	Heavy-duty connectors, Crimp contact, HQ, Male, Conductor cross-
GTIN (EAN)	4050118332131	section, max.: 8, turned, Copper alloy
Qty.	25 ST	
Type	HDC C HX SM2.5AG	Version
Order No.	1002920000	Heavy-duty connectors, Crimp contact, MixMate, Male, Conductor
GTIN (EAN)	4032248697106	cross-section, max.: 2.5, turned, Copper alloy
Qty.	25 ST	

HDC HQ 2 MC

Weidmüller Interface GmbH & Co. KG

Klingenbergstraße 26

D-32758 Detmold

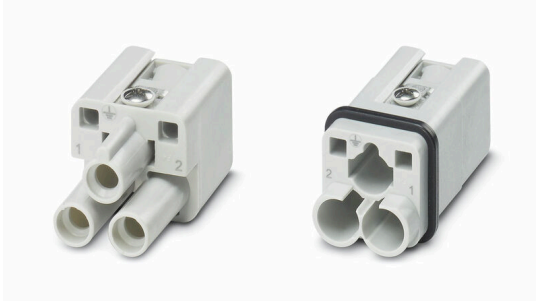
Germany

www.weidmueller.com

Accessories

Type	HDC C HX SM4.0AG	Version
Order No.	1002930000	Heavy-duty connectors, Crimp contact, MixMate, Male, Conductor
GTIN (EAN)	4032248697212	cross-section, max.: 4, turned, Copper alloy
Qty.	25 ST	
Type	HDC C HX SM6.0AG	Version
Order No.	1002940000	Heavy-duty connectors, Crimp contact, MixMate, Male, Conductor
GTIN (EAN)	4032248697229	cross-section, max.: 6, turned, Copper alloy
Qty.	25 ST	

2-pole



The HQ series - big features in a compact design. The electrical characteristics speak for themselves. The wire connection level is designed for crimp contacts. The proven crimp connection method has been in standard use for decades. Crimp contacts are not included in the scope of delivery of inserts.

General ordering data

Type	HDC HQ 2 FC	Version
Order No.	3103510000	HDC insert, Female, 400 V, 40 A, Number of poles: 2, Crimp contact,
GTIN (EAN)	4099987151238	Installation size: 1
Qty.	1 ST	

HA



Various accessories are available for our inserts. This includes coding elements for the inserts.

General ordering data

Type	HDC HA3/4 HQ5 PUSHIN CP	Version
Order No.	3142030000	Heavy-duty connectors, Accessories
GTIN (EAN)	4099987491730	
Qty.	10 ST	