

HDC HQ 2 HV FAS**Weidmüller Interface GmbH & Co. KG**

Klingenbergstraße 26

D-32758 Detmold

Germany

www.weidmueller.com

The HQ series - big features in a compact design. The electrical characteristics speak for themselves. The wire connection level is designed for axial screw. This technology enables the conductor to be connected without special tools. A simple Allen key is sufficient.

General ordering data

Version	HDC insert, Female, 830 V, 40 A, Number of poles: 2, Axial screw connection, Installation size: 1
Order No.	3100770000
Type	HDC HQ 2 HV FAS
GTIN (EAN)	4099987140218
Qty.	1 items

HDC HQ 2 HV FAS

Weidmüller Interface GmbH & Co. KG
Klingenbergstraße 26
D-32758 Detmold
Germany

www.weidmueller.com

Technical data

Approvals

Approvals



ROHS	Conform
UL File Number Search	UL Website
Certificate No. (cURus)	E310075

Dimensions and weights

Depth	21 mm	Depth (inches)	0.8268 inch
Height	39.8 mm	Height (inches)	1.5669 inch
Width	21 mm	Width (inches)	0.8268 inch
Diameter	4 mm	Net weight	21 g

Temperatures

Limit temperature	-40 °C ... 125 °C
-------------------	-------------------

Environmental Product Compliance

RoHS Compliance Status	Compliant without exemption
REACH SVHC	No SVHC above 0.1 wt%

Dimensions

Width	21 mm
-------	-------

General data

Number of poles	2	Plugging cycles, silver	≥ 500
Plugging cycles, gold	≥ 500	Plugging cycles, tin	≥ 500
Type of connection	Axial screw connection	Installation size	1
UL 94 flammability rating	V-0	Colour	grey
Insulating material	PC	Surface finish	Silver passivated
Type	Female	Surge voltage category	III
Pollution severity	3	Basic material	Copper alloy
Series	HQ	Rated voltage (DIN EN 61984)	830 V
Rated impulse voltage (DIN EN 61984)	6 kV	Rated current (DIN EN 61984)	40 A
Free from halogens	false	BG	1
Number of signal contacts	0	Number of power contacts	2

Connection data PE

Connection type PE	Screw connection
--------------------	------------------

Power contact

Type of connection, power contact	Axial screw connection	Tightening torque, max.	1.5 Nm
Tightening torque, min.	0.5 Nm		

HDC HQ 2 HV FAS

Weidmüller Interface GmbH & Co. KG
 Klingenbergstraße 26
 D-32758 Detmold
 Germany

www.weidmueller.com

Technical data

Signal contact

Tightening torque, max.	1.5 Nm	Tightening torque, min.	0.5 Nm
Stripping length, signal	6 mm		

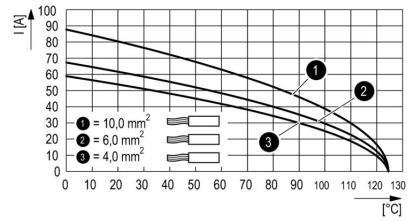
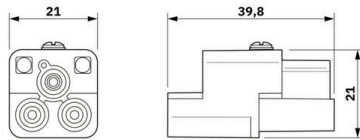
Version

Type of connection	Axial screw connection	Installation size	1
Conductor cross-section, max.	10 mm ²	Conductor cross-section, min.	1.5 mm ²
Surface finish	Silver passivated	Basic material	Copper alloy
BG	1		

Classifications

ETIM 8.0	EC000438	ETIM 9.0	EC000438
ETIM 10.0	EC000438	ECLASS 14.0	27-44-02-05
ECLASS 15.0	27-44-02-05		

Drawings



HDC HQ 2 HV FAS

Weidmüller Interface GmbH & Co. KG
 Klingenbergstraße 26
 D-32758 Detmold
 Germany

www.weidmueller.com

Accessories

Slotted screwdriver



VDE insulated slot-head screwdriver, SDI DIN 7437, ISO 2380/2, drive output acc. to DIN 5264, ISO 2380/1. SoftFinish grip

General ordering data

Type	SDIS 0.5X3.0X100	Version
Order No.	9008380000	Screwdriver, Screwdriver
GTIN (EAN)	4032248056347	
Qty.	1 ST	
Type	SDS 0.5X3.0X80	Version
Order No.	9008320000	Screwdriver, Screwdriver
GTIN (EAN)	4032248056262	
Qty.	1 ST	
Type	SDIS 0.6X3.5X100	Version
Order No.	9008390000	Screwdriver, Screwdriver
GTIN (EAN)	4032248056354	
Qty.	1 ST	
Type	SDS 0.6X3.5X100	Version
Order No.	9008330000	Screwdriver, Screwdriver
GTIN (EAN)	4032248056286	
Qty.	1 ST	
Type	SDIS 0.8X4.0X100	Version
Order No.	9008400000	Screwdriver, Screwdriver
GTIN (EAN)	4032248056361	
Qty.	1 ST	
Type	SDS 0.8X4.0X100	Version
Order No.	9008340000	Screwdriver, Screwdriver
GTIN (EAN)	4032248056293	
Qty.	1 ST	

Combined screwing and cutting tool "Swifty® CS"

Combined cutting/stripping tool Swifty® CS and Swifty® CS set for crimp-free cutting and stripping of copper cables up to 1.5 mm² solid and 2.5 mm² flexible.

HDC HQ 2 HV FAS

Weidmüller Interface GmbH & Co. KG
 Klingenbergstraße 26
 D-32758 Detmold
 Germany

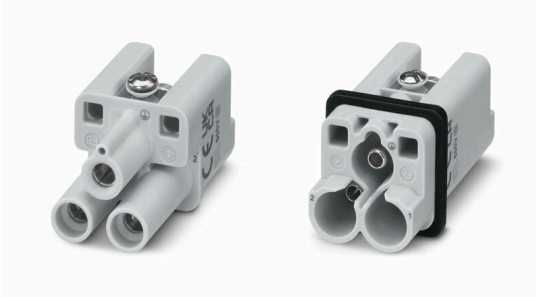
www.weidmueller.com

Accessories

General ordering data

Type	SWIFTY CS SET	Version	
Order No.	9006060000	Cutting and screwing-tool, Cutting tool for one-hand operation	
GTIN (EAN)	4032248257638		
Qty.	1 ST		

2-pole



The HQ series - big features in a compact design. The electrical characteristics speak for themselves. The wire connection level is designed for axial screw. This technology enables the conductor to be connected without special tools. A simple Allen key is sufficient.

General ordering data

Type	HDC HQ 2 MAS	Version	
Order No.	3100530000	HDC insert, Male, 400 V, 40 A, Number of poles: 2, Axial screw connection, Installation size: 1	
GTIN (EAN)	4099987138680		
Qty.	1 ST		

HA



Various accessories are available for our inserts. This includes coding elements for the inserts.

General ordering data

Type	HDC HA3/4 HQ5 PUSHIN CP	Version	
Order No.	3142030000	Heavy-duty connectors, Accessories	
GTIN (EAN)	4099987491730		
Qty.	10 ST		