

HDC HQ 2 HV MAS**Weidmüller Interface GmbH & Co. KG**

Klingenbergstraße 26

D-32758 Detmold

Germany

www.weidmueller.com



The HQ series - big features in a compact design. The electrical characteristics speak for themselves. The wire connection level is designed for axial screw. This technology enables the conductor to be connected without special tools. A simple Allen key is sufficient.

General ordering data

Version	HDC insert, Male, 830 V, 40 A, Number of poles: 2, Axial screw connection, Installation size: 1
Order No.	3100760000
Type	HDC HQ 2 HV MAS
GTIN (EAN)	4099987140188
Qty.	1 items

HDC HQ 2 HV MAS

Weidmüller Interface GmbH & Co. KG
Klingenbergstraße 26
D-32758 Detmold
Germany

www.weidmueller.com

Technical data

Approvals

Approvals



ROHS Conform

UL File Number Search [UL Website](#)

Certificate No. (cURus) E310075

Dimensions and weights

Depth	21 mm	Depth (inches)	0.8268 inch
Height	44.3 mm	Height (inches)	1.7441 inch
Width	23.6 mm	Width (inches)	0.9291 inch
Diameter	4 mm	Net weight	23 g

Temperatures

Limit temperature -40 °C ... 125 °C

Environmental Product Compliance

RoHS Compliance Status Compliant without exemption

REACH SVHC No SVHC above 0.1 wt%

Dimensions

Width 23.6 mm

General data

Number of poles	2	Plugging cycles, silver	≥ 500
Plugging cycles, gold	≥ 500	Plugging cycles, tin	≥ 500
Type of connection	Axial screw connection	Installation size	1
UL 94 flammability rating	V-0	Colour	grey
Insulating material	PC	Surface finish	Silver passivated
Type	Male	Surge voltage category	III
Pollution severity	3	Basic material	Copper alloy
Series	HQ	Rated voltage (DIN EN 61984)	830 V
Rated impulse voltage (DIN EN 61984)	6 kV	Rated current (DIN EN 61984)	40 A
Free from halogens	false	BG	1
Number of signal contacts	0	Number of power contacts	2

Connection data PE

Connection type PE Screw connection

Power contact

Type of connection, power contact	Axial screw connection	Tightening torque, max.	1.5 Nm
Tightening torque, min.	0.5 Nm		

HDC HQ 2 HV MAS

Weidmüller Interface GmbH & Co. KG
 Klingenbergstraße 26
 D-32758 Detmold
 Germany

www.weidmueller.com

Technical data

Signal contact

Tightening torque, max.	1.5 Nm	Tightening torque, min.	0.5 Nm
Stripping length, signal	6 mm		

Version

Type of connection	Axial screw connection	Installation size	1
Conductor cross-section, max.	10 mm ²	Conductor cross-section, min.	1.5 mm ²
Surface finish	Silver passivated	Basic material	Copper alloy
BG	1		

Classifications

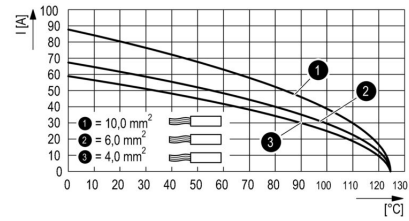
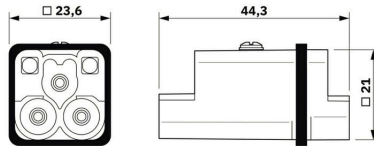
ETIM 8.0	EC000438	ETIM 9.0	EC000438
ETIM 10.0	EC000438	ECLASS 14.0	27-44-02-05
ECLASS 15.0	27-44-02-05		

HDC HQ 2 HV MAS

Weidmüller Interface GmbH & Co. KG
Klingenbergstraße 26
D-32758 Detmold
Germany

Drawings

www.weidmueller.com



HDC HQ 2 HV MAS

Weidmüller Interface GmbH & Co. KG
 Klingenbergstraße 26
 D-32758 Detmold
 Germany

www.weidmueller.com

Accessories

Slotted screwdriver



VDE insulated slot-head screwdriver, SDI DIN 7437, ISO 2380/2, drive output acc. to DIN 5264, ISO 2380/1. SoftFinish grip

General ordering data

Type	SDIS 0.5X3.0X100	Version
Order No.	9008380000	Screwdriver, Screwdriver
GTIN (EAN)	4032248056347	
Qty.	1 ST	
Type	SDS 0.5X3.0X80	Version
Order No.	9008320000	Screwdriver, Screwdriver
GTIN (EAN)	4032248056262	
Qty.	1 ST	
Type	SDIS 0.6X3.5X100	Version
Order No.	9008390000	Screwdriver, Screwdriver
GTIN (EAN)	4032248056354	
Qty.	1 ST	
Type	SDS 0.6X3.5X100	Version
Order No.	9008330000	Screwdriver, Screwdriver
GTIN (EAN)	4032248056286	
Qty.	1 ST	
Type	SDIS 0.8X4.0X100	Version
Order No.	9008400000	Screwdriver, Screwdriver
GTIN (EAN)	4032248056361	
Qty.	1 ST	
Type	SDS 0.8X4.0X100	Version
Order No.	9008340000	Screwdriver, Screwdriver
GTIN (EAN)	4032248056293	
Qty.	1 ST	

Combined screwing and cutting tool "Swifty® CS"

Combined cutting/stripping tool Swifty® CS and Swifty® CS set for crimp-free cutting and stripping of copper cables up to 1.5 mm² solid and 2.5 mm² flexible.

HDC HQ 2 HV MAS

Weidmüller Interface GmbH & Co. KG
 Klingenbergstraße 26
 D-32758 Detmold
 Germany

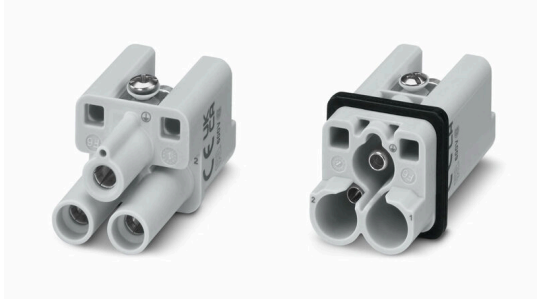
www.weidmueller.com

Accessories

General ordering data

Type	SWIFTY CS SET	Version	
Order No.	9006060000	Cutting and screwing-tool, Cutting tool for one-hand operation	
GTIN (EAN)	4032248257638		
Qty.	1 ST		

2-pole



The HQ series - big features in a compact design. The electrical characteristics speak for themselves. The wire connection level is designed for axial screw. This technology enables the conductor to be connected without special tools. A simple Allen key is sufficient.

General ordering data

Type	HDC HQ 2 HV FAS	Version	
Order No.	3100770000	HDC insert, Female, 830 V, 40 A, Number of poles: 2, Axial screw connection, Installation size: 1	
GTIN (EAN)	4099987 1402 18		
Qty.	1 ST		

HA



Various accessories are available for our inserts. This includes coding elements for the inserts.

General ordering data

Type	HDC HA3/4 HQ5 PUSHIN CP	Version	
Order No.	3142030000	Heavy-duty connectors, Accessories	
GTIN (EAN)	4099987491730		
Qty.	10 ST		