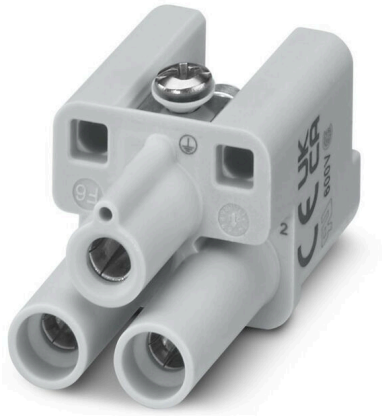


**HDC HQ 2 FAS****Weidmüller Interface GmbH & Co. KG**

Klingenbergstraße 26

D-32758 Detmold

Germany

[www.weidmueller.com](http://www.weidmueller.com)

The HQ series - big features in a compact design. The electrical characteristics speak for themselves. The wire connection level is designed for axial screw. This technology enables the conductor to be connected without special tools. A simple Allen key is sufficient.

**General ordering data**

Version	HDC insert, Female, 400 V, 40 A, Number of poles: 2, Axial screw connection, Installation size: 1
Order No.	<a href="#">3100750000</a>
Type	HDC HQ 2 FAS
GTIN (EAN)	4099987140171
Qty.	1 items

## HDC HQ 2 FAS

Weidmüller Interface GmbH & Co. KG  
Klingenbergstraße 26  
D-32758 Detmold  
Germany

www.weidmueller.com

## Technical data

## Approvals

Approvals



ROHS Conform

UL File Number Search [UL Website](#)

Certificate No. (cURus) E310075

## Dimensions and weights

Width	21 mm	Width (inches)	0.8268 inch
Diameter	4 mm	Net weight	21 g

## Environmental Product Compliance

RoHS Compliance Status	Compliant without exemption
REACH SVHC	No SVHC above 0.1 wt%

## Dimensions

Width	21 mm
-------	-------

## General data

Number of poles	2	Plugging cycles, silver	≥ 500
Plugging cycles, gold	≥ 500	Plugging cycles, tin	≥ 500
Type of connection	Axial screw connection	Installation size	1
UL 94 flammability rating	V-0	Colour	grey
Insulating material	PC	Surface finish	Miscellaneous
Type	Female	Surge voltage category	III
Pollution severity	3	Basic material	Polycarbonate
Series	HQ	Rated voltage (DIN EN 61984)	400 V
Rated impulse voltage (DIN EN 61984)	6 kV	Rated current (DIN EN 61984)	40 A
Free from halogens	false	BG	1
Number of signal contacts	0	Number of power contacts	2

## Power contact

Type of connection, power contact	Axial screw connection	Tightening torque, max.	1.5 Nm
Tightening torque, min.	0.5 Nm		

## Signal contact

Tightening torque, max.	1.5 Nm	Tightening torque, min.	0.5 Nm
Stripping length, signal	6 mm		

## Version

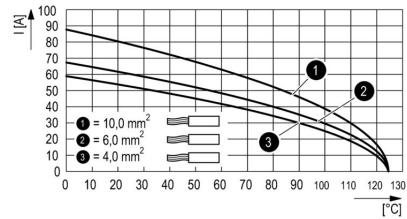
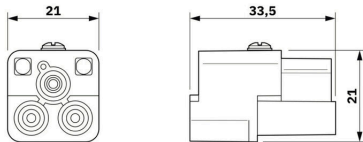
Type of connection	Axial screw connection	Installation size	1
Conductor cross-section, max.	10 mm <sup>2</sup>	Conductor cross-section, min.	1.5 mm <sup>2</sup>
Surface finish	Miscellaneous	Basic material	Polycarbonate
BG	1		

**Technical data**

**Classifications**

ETIM 8.0	EC000438	ETIM 9.0	EC000438
ETIM 10.0	EC000438	ECLASS 14.0	27-44-02-05
ECLASS 15.0	27-44-02-05		

Drawings



## HDC HQ 2 FAS

Weidmüller Interface GmbH &amp; Co. KG

Klingenbergstraße 26

D-32758 Detmold

Germany

www.weidmueller.com

## Accessories

## Slotted screwdriver



VDE insulated slot-head screwdriver, SDI DIN 7437, ISO 2380/2, drive output acc. to DIN 5264, ISO 2380/1. SoftFinish grip

## General ordering data

Type	SDIS 0.5X3.0X100	Version
Order No.	<a href="#">9008380000</a>	Screwdriver, Screwdriver
GTIN (EAN)	4032248056347	
Qty.	1 ST	
Type	SDS 0.5X3.0X80	Version
Order No.	<a href="#">9008320000</a>	Screwdriver, Screwdriver
GTIN (EAN)	4032248056262	
Qty.	1 ST	
Type	SDIS 0.6X3.5X100	Version
Order No.	<a href="#">9008390000</a>	Screwdriver, Screwdriver
GTIN (EAN)	4032248056354	
Qty.	1 ST	
Type	SDS 0.6X3.5X100	Version
Order No.	<a href="#">9008330000</a>	Screwdriver, Screwdriver
GTIN (EAN)	4032248056286	
Qty.	1 ST	
Type	SDIS 0.8X4.0X100	Version
Order No.	<a href="#">9008400000</a>	Screwdriver, Screwdriver
GTIN (EAN)	4032248056361	
Qty.	1 ST	
Type	SDS 0.8X4.0X100	Version
Order No.	<a href="#">9008340000</a>	Screwdriver, Screwdriver
GTIN (EAN)	4032248056293	
Qty.	1 ST	

## Combined screwing and cutting tool "Swifty® CS"



Combined cutting/stripping tool Swifty® CS and Swifty® CS set for crimp-free cutting and stripping of copper cables up to 1.5 mm<sup>2</sup> solid and 2.5 mm<sup>2</sup> flexible.

## HDC HQ 2 FAS

**Weidmüller Interface GmbH & Co. KG**  
 Klingenbergstraße 26  
 D-32758 Detmold  
 Germany

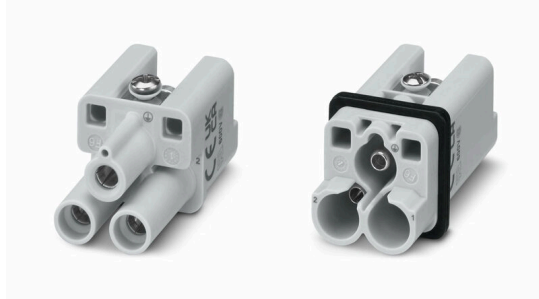
www.weidmueller.com

## Accessories

## General ordering data

Type	SWIFTY CS SET	Version	
Order No.	<a href="#">9006060000</a>	Cutting and screwing-tool, Cutting tool for one-hand operation	
GTIN (EAN)	4032248257638		
Qty.	1 ST		

## 2-pole



The HQ series - big features in a compact design. The electrical characteristics speak for themselves. The wire connection level is designed for axial screw. This technology enables the conductor to be connected without special tools. A simple Allen key is sufficient.

## General ordering data

Type	HDC HQ 2 MAS	Version	
Order No.	<a href="#">3100530000</a>	HDC insert, Male, 400 V, 40 A, Number of poles: 2, Axial screw connection, Installation size: 1	
GTIN (EAN)	4099987138680		
Qty.	1 ST		

## HA



Various accessories are available for our inserts. This includes coding elements for the inserts.

## General ordering data

Type	HDC HA 3/4 HQ5 PUSHIN CP	Version	
Order No.	<a href="#">3142030000</a>	Heavy-duty connectors, Accessories	
GTIN (EAN)	4099987491730		
Qty.	10 ST		