

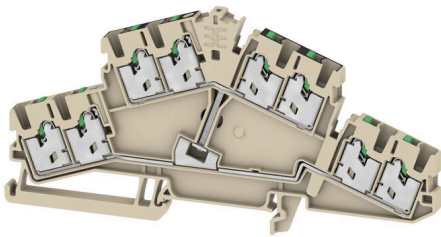
S2T 2.5 8C VL**Weidmüller Interface GmbH & Co. KG**

Klingenbergstraße 26

D-32758 Detmold

Germany

www.weidmueller.com



To feed through power, signal, and data is the classical requirement in electrical engineering and panel building. The insulating material, the connection system and the design of the terminal blocks are the differentiating features. A feed-through terminal block is suitable for joining and/or connecting one or more conductors. They could have one or more connection levels that are on the same potential or insulated against one another.

General ordering data

| | |
|------------|--|
| Version | Multi-tier modular terminal, SNAP IN, dark beige, 2.5 mm ² , 800 V, Number of connections: 8, Number of levels: 2, TS 35, V-0 |
| Order No. | 3093120000 |
| Type | S2T 2.5 8C VL |
| GTIN (EAN) | 4099987110129 |
| Qty. | 50 items |

S2T 2.5 8C VL

Weidmüller Interface GmbH & Co. KG
Klingenbergstraße 26
D-32758 Detmold
Germany

www.weidmueller.com

Technical data

Approvals

Approvals



UL File Number Search [UL Website](#)
Certificate No. (cURus) E60693

Dimensions and weights

| | | | |
|--------------------------|-------------|----------------|-------------|
| Depth | 64.5 mm | Depth (inches) | 2.5394 inch |
| Depth including DIN rail | 65 mm | Height | 127.5 mm |
| Height (inches) | 5.0197 inch | Width | 5.1 mm |
| Width (inches) | 0.2008 inch | Net weight | 29.62 g |

Temperatures

| | | | |
|----------------------------------|----------------|----------------------------------|--------|
| Storage temperature | -25 °C...55 °C | Ambient temperature | -5 °C |
| Continuous operating temp., min. | -60 °C | Continuous operating temp., max. | 130 °C |

Environmental Product Compliance

RoHS Compliance Status Compliant without exemption
REACH SVHC No SVHC above 0.1 wt%

Material data

| | | | |
|--------------------------------|-------|---------------------------|------------|
| Basic material | Wemid | Colour | dark beige |
| Colour of operational elements | green | UL 94 flammability rating | V-0 |

Rating data IECEx/ATEX

Marking EN 60079-7 Ex eb II C Gb Ex 2014/34/EU label II 2 G D

System specifications

| | | | |
|-------------------------------|-----|-------------------------------------|-------|
| End cover plate required | Yes | Number of potentials | 1 |
| Number of levels | 2 | Number of clamping points per level | 4 |
| Number of potentials per tier | 1 | Levels cross-connected internally | Yes |
| PE connection | No | Mounting rail | TS 35 |
| N-function | No | PE function | No |
| PEN function | No | | |

Additional technical data

| | | | |
|--------------------------|-----|------------------|---------|
| With snap-in pegs | No | Open sides | right |
| Snap-on | Yes | Type of fixing | Snap-on |
| Explosion-tested version | No | Type of mounting | TS 35 |

Conductors for clamping (additional connection)

Connection type, additional connection SNAP IN

Technical data

Conductors for clamping (rated connection)

| | | | |
|---|----------------------|---|----------------------|
| Gauge to IEC 60947-1 | A2 | Wire connection cross section AWG, max. | AWG 14 |
| Connection direction | Inclined / angled | Stripping length | 10 mm |
| Type of connection 2 | SNAP IN | Type of connection | SNAP IN |
| Number of connections | 8 | Clamping range, max. | 2.5 mm ² |
| Clamping range, min. | 0.34 mm ² | Blade size | 0.6 x 3.5 mm |
| Wire connection cross section AWG, min. | AWG 22 | Wire connection cross-section, finely stranded with wire-end ferrules DIN 46228/4, max. | 2.5 mm ² |
| Wire connection cross-section, finely stranded with wire-end ferrules DIN 46228/4, min. | 0.34 mm ² | Wire connection cross-section, finely stranded with wire-end ferrules DIN 46228/1, max. | 2.5 mm ² |
| Wire connection cross-section, finely stranded with wire-end ferrules DIN 46228/1, min. | 0.34 mm ² | Wire connection cross section, finely stranded, max. | 4 mm ² |
| Wire connection cross section, finely stranded, min. | 0.34 mm ² | Connection cross-section, stranded, max. | 2.5 mm ² |
| Connection cross-section, stranded, min. | 0.34 mm ² | Twin wire-end ferrules, max. | 0.75 mm ² |
| Twin wire-end ferrules, min. | 0.5 mm ² | Wire connection cross-section, solid core, max. | 2.5 mm ² |
| Wire connection cross-section, solid core, min. | 0.34 mm ² | Connection cross-section, finely stranded, max. | 2.5 mm ² |
| Connection cross-section, finely stranded, min. | 0.34 mm ² | | |

General

| | | | |
|---|---------------|---|--------|
| Wire connection cross section AWG, max. | AWG 14 | Wire connection cross section AWG, min. | AWG 22 |
| Standards | IEC 60947-7-1 | Mounting rail | TS 35 |

Rating data

| | | | |
|--|---------------------|---------------------------------|---------------|
| Rated cross-section | 2.5 mm ² | Rated voltage | 800 V |
| Rated DC voltage | 800 V | Nominal current | 24 A |
| Current at maximum wires | 24 A | Standards | IEC 60947-7-1 |
| Volume resistance according to IEC 60947-7-x | 1.33 mΩ | Rated impulse withstand voltage | 8 kV |
| Power loss in accordance with IEC 60947-7-x | 0.77 mW | Surge voltage category | III |
| Pollution severity | 3 | | |

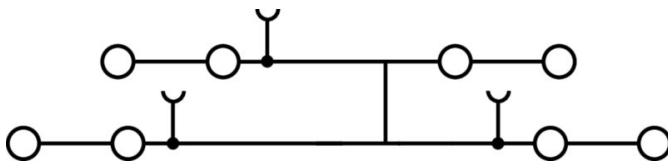
UL rating data

| | | | |
|--|--------|--|--------|
| Conductor size Factory wiring max. (cURus) | 12 AWG | Voltage size B (cURus) | 600 V |
| Voltage size D (cURus) | 600 V | Certificate No. (cURus) | E60693 |
| Conductor size Field wiring min. (cURus) | 22 AWG | Conductor size Factory wiring min. (cURus) | 22 AWG |
| Current size B (cURus) | 20 A | Voltage size C (cURus) | 600 V |
| Current size C (cURus) | 20 A | Current size D (cURus) | 5 A |
| Conductor size Field wiring max. (cURus) | 12 AWG | | |

Classifications

| | | | |
|-------------|-------------|-------------|-------------|
| ETIM 8.0 | EC000897 | ETIM 9.0 | EC000897 |
| ETIM 10.0 | EC000897 | ECLASS 14.0 | 27-25-01-02 |
| ECLASS 15.0 | 27-25-01-02 | | |

Drawings



Accessories

Cross-connections



The distribution or multiplication of a potential to adjoining terminal blocks is realized via a cross-connection. Additional wiring effort can be easily avoided. Even if the poles are broken out, contact reliability in the terminal blocks is still ensured. Our portfolio offers pluggable and screwable cross-connection systems for modular terminal blocks.

General ordering data

| | | |
|------------|----------------------------|---|
| Type | ZQV 2.5N/10 | Version |
| Order No. | 1527690000 | Cross-connector (terminal), Plugged, orange, 24 A, Number of poles: |
| GTIN (EAN) | 4050118447989 | 10, Pitch in mm (P): 5.10, Insulated: Yes, Width: 48.7 mm |
| Qty. | 20 ST | |
| Type | ZQV 2.5N/10 BK | Version |
| Order No. | 2831750000 | Cross-connector (terminal), Plugged, black, 24 A, Number of poles: |
| GTIN (EAN) | 4064675416982 | 10, Pitch in mm (P): 5.10, Insulated: Yes, Width: 48.7 mm |
| Qty. | 20 ST | |
| Type | ZQV 2.5N/10 BL | Version |
| Order No. | 1527880000 | Cross-connector (terminal), Plugged, blue, 24 A, Number of poles: 10, |
| GTIN (EAN) | 4050118448573 | Pitch in mm (P): 5.10, Insulated: Yes, Width: 48.7 mm |
| Qty. | 20 ST | |
| Type | ZQV 2.5N/10 RD | Version |
| Order No. | 2108910000 | Cross-connector (terminal), Plugged, red, 24 A, Number of poles: 10, |
| GTIN (EAN) | 4050118486018 | Pitch in mm (P): 5.10, Insulated: Yes, Width: 48.7 mm |
| Qty. | 20 ST | |
| Type | ZQV 2.5N/10 WT | Version |
| Order No. | 2831640000 | Cross-connector (terminal), Plugged, white, 24 A, Number of poles: |
| GTIN (EAN) | 4064675416876 | 10, Pitch in mm (P): 5.10, Insulated: Yes, Width: 48.7 mm |
| Qty. | 20 ST | |
| Type | ZQV 2.5N/2 | Version |
| Order No. | 1527540000 | Cross-connector (terminal), Plugged, orange, 24 A, Number of poles: |
| GTIN (EAN) | 4050118448467 | 2, Pitch in mm (P): 5.10, Insulated: Yes, Width: 7.9 mm |
| Qty. | 60 ST | |
| Type | ZQV 2.5N/2 BK | Version |
| Order No. | 2831670000 | Cross-connector (terminal), Plugged, black, 24 A, Number of poles: 2, |
| GTIN (EAN) | 4064675416906 | Pitch in mm (P): 5.10, Insulated: Yes, Width: 7.9 mm |
| Qty. | 60 ST | |
| Type | ZQV 2.5N/2 BL | Version |
| Order No. | 1527740000 | Cross-connector (terminal), Plugged, blue, 24 A, Number of poles: 2, |
| GTIN (EAN) | 4050118448658 | Pitch in mm (P): 5.10, Insulated: Yes, Width: 7.9 mm |
| Qty. | 60 ST | |
| Type | ZQV 2.5N/2 RD | Version |
| Order No. | 2108470000 | Cross-connector (terminal), Plugged, red, 24 A, Number of poles: 2, |
| GTIN (EAN) | 4050118448542 | Pitch in mm (P): 5.10, Insulated: Yes, Width: 7.9 mm |
| Qty. | 60 ST | |
| Type | ZQV 2.5N/2 WT | Version |
| Order No. | 2831560000 | Cross-connector (terminal), Plugged, white, 24 A, Number of poles: 2, |
| GTIN (EAN) | 4064675416692 | Pitch in mm (P): 5.10, Insulated: Yes, Width: 7.9 mm |
| Qty. | 60 ST | |

S2T 2.5 8C VL

Weidmüller Interface GmbH & Co. KG
 Klingenbergstraße 26
 D-32758 Detmold
 Germany

www.weidmueller.com

Accessories

| | | |
|------------|----------------------------|---|
| Type | ZQV 2.5N/20 | Version |
| Order No. | 1527720000 | Cross-connector (terminal), Plugged, orange, 24 A, Number of poles: |
| GTIN (EAN) | 4050118447972 | 20, Pitch in mm (P): 5.10, Insulated: Yes, Width: 102 mm |
| Qty. | 20 ST | |
| Type | ZQV 2.5N/20 BK | Version |
| Order No. | 2831760000 | Cross-connector (terminal), Plugged, black, 24 A, Number of poles: |
| GTIN (EAN) | 4064675416999 | 20, Pitch in mm (P): 5.10, Insulated: Yes, Width: 102 mm |
| Qty. | 20 ST | |
| Type | ZQV 2.5N/20 BL | Version |
| Order No. | 1527890000 | Cross-connector (terminal), Plugged, blue, 24 A, Number of poles: 20, |
| GTIN (EAN) | 4050118448566 | Pitch in mm (P): 5.10, Insulated: Yes, Width: 102 mm |
| Qty. | 20 ST | |
| Type | ZQV 2.5N/20 RD | Version |
| Order No. | 2108920000 | Cross-connector (terminal), Plugged, red, 24 A, Number of poles: 20, |
| GTIN (EAN) | 4050118485899 | Pitch in mm (P): 5.10, Insulated: Yes, Width: 102 mm |
| Qty. | 20 ST | |
| Type | ZQV 2.5N/20 WT | Version |
| Order No. | 2831650000 | Cross-connector (terminal), Plugged, white, 24 A, Number of poles: |
| GTIN (EAN) | 4064675416883 | 20, Pitch in mm (P): 5.10, Insulated: Yes, Width: 102 mm |
| Qty. | 20 ST | |
| Type | ZQV 2.5N/3 | Version |
| Order No. | 1527570000 | Cross-connector (terminal), Plugged, orange, 24 A, Number of poles: |
| GTIN (EAN) | 4050118448450 | 3, Pitch in mm (P): 5.10, Insulated: Yes, Width: 13 mm |
| Qty. | 60 ST | |
| Type | ZQV 2.5N/3 BK | Version |
| Order No. | 2831680000 | Cross-connector (terminal), Plugged, black, 24 A, Number of poles: 3, |
| GTIN (EAN) | 4064675416913 | Pitch in mm (P): 5.10, Insulated: Yes, Width: 13 mm |
| Qty. | 60 ST | |
| Type | ZQV 2.5N/3 BL | Version |
| Order No. | 1527770000 | Cross-connector (terminal), Plugged, blue, 24 A, Number of poles: 3, |
| GTIN (EAN) | 4050118448641 | Pitch in mm (P): 5.10, Insulated: Yes, Width: 13 mm |
| Qty. | 60 ST | |
| Type | ZQV 2.5N/3 RD | Version |
| Order No. | 2108690000 | Cross-connector (terminal), Plugged, red, 24 A, Number of poles: 3, |
| GTIN (EAN) | 4050118448535 | Pitch in mm (P): 5.10, Insulated: Yes, Width: 13 mm |
| Qty. | 60 ST | |
| Type | ZQV 2.5N/3 WT | Version |
| Order No. | 2831570000 | Cross-connector (terminal), Plugged, white, 24 A, Number of poles: 3, |
| GTIN (EAN) | 4064675416807 | Pitch in mm (P): 5.10, Insulated: Yes, Width: 13 mm |
| Qty. | 60 ST | |
| Type | ZQV 2.5N/4 | Version |
| Order No. | 1527590000 | Cross-connector (terminal), Plugged, orange, 24 A, Number of poles: |
| GTIN (EAN) | 4050118448443 | 4, Pitch in mm (P): 5.10, Insulated: Yes, Width: 18.1 mm |
| Qty. | 60 ST | |
| Type | ZQV 2.5N/4 BK | Version |
| Order No. | 2831690000 | Cross-connector (terminal), Plugged, black, 24 A, Number of poles: 4, |
| GTIN (EAN) | 4064675416920 | Pitch in mm (P): 5.10, Insulated: Yes, Width: 18.1 mm |
| Qty. | 60 ST | |
| Type | ZQV 2.5N/4 BL | Version |
| Order No. | 1527780000 | Cross-connector (terminal), Plugged, blue, 24 A, Number of poles: 4, |
| GTIN (EAN) | 4050118448634 | Pitch in mm (P): 5.10, Insulated: Yes, Width: 18.1 mm |
| Qty. | 60 ST | |

Accessories

| | | |
|------------|----------------------------|---|
| Type | ZQV 2.5N/4 RD | Version |
| Order No. | 2108700000 | Cross-connector (terminal), Plugged, red, 24 A, Number of poles: 4, |
| GTIN (EAN) | 4050118448528 | Pitch in mm (P): 5.10, Insulated: Yes, Width: 18.1 mm |
| Qty. | 60 ST | |
| Type | ZQV 2.5N/4 WT | Version |
| Order No. | 2831580000 | Cross-connector (terminal), Plugged, white, 24 A, Number of poles: 4, |
| GTIN (EAN) | 4064675416814 | Pitch in mm (P): 5.10, Insulated: Yes, Width: 18.1 mm |
| Qty. | 60 ST | |
| Type | ZQV 2.5N/5 | Version |
| Order No. | 1527620000 | Cross-connector (terminal), Plugged, orange, 24 A, Number of poles: 5, |
| GTIN (EAN) | 4050118448436 | Pitch in mm (P): 5.10, Insulated: Yes, Width: 23.2 mm |
| Qty. | 20 ST | |
| Type | ZQV 2.5N/5 BK | Version |
| Order No. | 2831700000 | Cross-connector (terminal), Plugged, black, 24 A, Number of poles: 5, |
| GTIN (EAN) | 4064675416937 | Pitch in mm (P): 5.10, Insulated: Yes, Width: 23.2 mm |
| Qty. | 20 ST | |
| Type | ZQV 2.5N/5 BL | Version |
| Order No. | 1527790000 | Cross-connector (terminal), Plugged, blue, 24 A, Number of poles: 5, |
| GTIN (EAN) | 4050118448627 | Pitch in mm (P): 5.10, Insulated: Yes, Width: 23.2 mm |
| Qty. | 20 ST | |
| Type | ZQV 2.5N/5 RD | Version |
| Order No. | 2108710000 | Cross-connector (terminal), Plugged, red, 24 A, Number of poles: 5, |
| GTIN (EAN) | 4050118448511 | Pitch in mm (P): 5.10, Insulated: Yes, Width: 23.2 mm |
| Qty. | 20 ST | |
| Type | ZQV 2.5N/5 WT | Version |
| Order No. | 2831590000 | Cross-connector (terminal), Plugged, white, 24 A, Number of poles: 5, |
| GTIN (EAN) | 4064675416821 | Pitch in mm (P): 5.10, Insulated: Yes, Width: 23.2 mm |
| Qty. | 20 ST | |
| Type | ZQV 2.5N/50 | Version |
| Order No. | 1527730000 | Cross-connector (terminal), Plugged, orange, 24 A, Number of poles: 50, |
| GTIN (EAN) | 4050118411362 | Pitch in mm (P): 5.10, Insulated: Yes, Width: 255 mm |
| Qty. | 5 ST | |
| Type | ZQV 2.5N/50 BK | Version |
| Order No. | 2831770000 | Cross-connector (terminal), Plugged, black, 24 A, Number of poles: 50, |
| GTIN (EAN) | 4064675417002 | Pitch in mm (P): 5.10, Insulated: Yes, Width: 255 mm |
| Qty. | 5 ST | |
| Type | ZQV 2.5N/50 BL | Version |
| Order No. | 1527920000 | Cross-connector (terminal), Plugged, blue, 24 A, Number of poles: 50, |
| GTIN (EAN) | 4050118448559 | Pitch in mm (P): 5.10, Insulated: Yes, Width: 255 mm |
| Qty. | 5 ST | |
| Type | ZQV 2.5N/50 RD | Version |
| Order No. | 2109000000 | Cross-connector (terminal), Plugged, red, 24 A, Number of poles: 50, |
| GTIN (EAN) | 4050118486001 | Pitch in mm (P): 5.10, Insulated: Yes, Width: 255 mm |
| Qty. | 5 ST | |
| Type | ZQV 2.5N/50 WT | Version |
| Order No. | 2831660000 | Cross-connector (terminal), Plugged, white, 24 A, Number of poles: 50, |
| GTIN (EAN) | 4064675416890 | Pitch in mm (P): 5.10, Insulated: Yes, Width: 255 mm |
| Qty. | 5 ST | |
| Type | ZQV 2.5N/6 | Version |
| Order No. | 1527630000 | Cross-connector (terminal), Plugged, orange, 24 A, Number of poles: 6, |
| GTIN (EAN) | 4050118448429 | Pitch in mm (P): 5.10, Insulated: Yes, Width: 28.3 mm |
| Qty. | 20 ST | |

S2T 2.5 8C VL

Weidmüller Interface GmbH & Co. KG

Klingenbergstraße 26
D-32758 Detmold
Germany

www.weidmueller.com

Accessories

| | | |
|------------|----------------------------|--|
| Type | ZQV 2.5N/6 BK | Version |
| Order No. | 2831710000 | Cross-connector (terminal), Plugged, black, 24 A, Number of poles: 6, |
| GTIN (EAN) | 4064675416944 | Pitch in mm (P): 5.10, Insulated: Yes, Width: 28.3 mm |
| Qty. | 20 ST | |
| Type | ZQV 2.5N/6 BL | Version |
| Order No. | 1527820000 | Cross-connector (terminal), Plugged, blue, 24 A, Number of poles: 6, |
| GTIN (EAN) | 4050118448610 | Pitch in mm (P): 5.10, Insulated: Yes, Width: 28.3 mm |
| Qty. | 20 ST | |
| Type | ZQV 2.5N/6 RD | Version |
| Order No. | 2108720000 | Cross-connector (terminal), Plugged, red, 24 A, Number of poles: 6, |
| GTIN (EAN) | 4050118448504 | Pitch in mm (P): 5.10, Insulated: Yes, Width: 28.3 mm |
| Qty. | 20 ST | |
| Type | ZQV 2.5N/6 WT | Version |
| Order No. | 2831600000 | Cross-connector (terminal), Plugged, white, 24 A, Number of poles: 6, |
| GTIN (EAN) | 4064675416838 | Pitch in mm (P): 5.10, Insulated: Yes, Width: 28.3 mm |
| Qty. | 20 ST | |
| Type | ZQV 2.5N/7 | Version |
| Order No. | 1527640000 | Cross-connector (terminal), Plugged, orange, 24 A, Number of poles: 7, |
| GTIN (EAN) | 4050118448412 | Pitch in mm (P): 5.10, Insulated: Yes, Width: 33.4 mm |
| Qty. | 20 ST | |
| Type | ZQV 2.5N/7 BK | Version |
| Order No. | 2831720000 | Cross-connector (terminal), Plugged, black, 24 A, Number of poles: 7, |
| GTIN (EAN) | 4064675416951 | Pitch in mm (P): 5.10, Insulated: Yes, Width: 33.4 mm |
| Qty. | 20 ST | |
| Type | ZQV 2.5N/7 BL | Version |
| Order No. | 1527830000 | Cross-connector (terminal), Plugged, blue, 24 A, Number of poles: 7, |
| GTIN (EAN) | 4050118448603 | Pitch in mm (P): 5.10, Insulated: Yes, Width: 33.4 mm |
| Qty. | 20 ST | |
| Type | ZQV 2.5N/7 RD | Version |
| Order No. | 2108810000 | Cross-connector (terminal), Plugged, red, 24 A, Number of poles: 7, |
| GTIN (EAN) | 4050118448498 | Pitch in mm (P): 5.10, Insulated: Yes, Width: 33.4 mm |
| Qty. | 20 ST | |
| Type | ZQV 2.5N/7 WT | Version |
| Order No. | 2831610000 | Cross-connector (terminal), Plugged, white, 24 A, Number of poles: 7, |
| GTIN (EAN) | 4064675416845 | Pitch in mm (P): 5.10, Insulated: Yes, Width: 33.4 mm |
| Qty. | 20 ST | |
| Type | ZQV 2.5N/8 | Version |
| Order No. | 1527670000 | Cross-connector (terminal), Plugged, orange, 24 A, Number of poles: 8, |
| GTIN (EAN) | 4050118448405 | Pitch in mm (P): 5.10, Insulated: Yes, Width: 38.5 mm |
| Qty. | 20 ST | |
| Type | ZQV 2.5N/8 BK | Version |
| Order No. | 2831730000 | Cross-connector (terminal), Plugged, black, 24 A, Number of poles: 8, |
| GTIN (EAN) | 4064675416968 | Pitch in mm (P): 5.10, Insulated: Yes, Width: 38.5 mm |
| Qty. | 20 ST | |
| Type | ZQV 2.5N/8 BL | Version |
| Order No. | 1527840000 | Cross-connector (terminal), Plugged, blue, 24 A, Number of poles: 8, |
| GTIN (EAN) | 4050118448597 | Pitch in mm (P): 5.10, Insulated: Yes, Width: 38.5 mm |
| Qty. | 20 ST | |
| Type | ZQV 2.5N/8 RD | Version |
| Order No. | 2108870000 | Cross-connector (terminal), Plugged, red, 24 A, Number of poles: 8, |
| GTIN (EAN) | 4050118448481 | Pitch in mm (P): 5.10, Insulated: Yes, Width: 38.5 mm |
| Qty. | 20 ST | |

S2T 2.5 8C VL

Weidmüller Interface GmbH & Co. KG
 Klingenbergstraße 26
 D-32758 Detmold
 Germany

www.weidmueller.com

Accessories

| | | |
|------------|----------------------------|---|
| Type | ZQV 2.5N/8 WT | Version |
| Order No. | 2831620000 | Cross-connector (terminal), Plugged, white, 24 A, Number of poles: 8, |
| GTIN (EAN) | 4064675416852 | Pitch in mm (P): 5.10, Insulated: Yes, Width: 38.5 mm |
| Qty. | 20 ST | |
| Type | ZQV 2.5N/9 | Version |
| Order No. | 1527680000 | Cross-connector (terminal), Plugged, orange, 24 A, Number of poles: |
| GTIN (EAN) | 4050118447996 | 9, Pitch in mm (P): 5.10, Insulated: Yes, Width: 43.6 mm |
| Qty. | 20 ST | |
| Type | ZQV 2.5N/9 BK | Version |
| Order No. | 2831740000 | Cross-connector (terminal), Plugged, black, 24 A, Number of poles: 9, |
| GTIN (EAN) | 4064675416975 | Pitch in mm (P): 5.10, Insulated: Yes, Width: 43.6 mm |
| Qty. | 20 ST | |
| Type | ZQV 2.5N/9 RD | Version |
| Order No. | 2108900000 | Cross-connector (terminal), Plugged, red, 24 A, Number of poles: 9, |
| GTIN (EAN) | 4050118448474 | Pitch in mm (P): 5.10, Insulated: Yes, Width: 43.6 mm |
| Qty. | 20 ST | |
| Type | ZQV 2.5N/9 BL | Version |
| Order No. | 1527870000 | Cross-connector (terminal), Plugged, blue, 24 A, Number of poles: 9, |
| GTIN (EAN) | 4050118448580 | Pitch in mm (P): 5.10, Insulated: Yes, Width: 43.6 mm |
| Qty. | 20 ST | |
| Type | ZQV 2.5N/9 WT | Version |
| Order No. | 2831630000 | Cross-connector (terminal), Plugged, white, 24 A, Number of poles: 9, |
| GTIN (EAN) | 4064675416869 | Pitch in mm (P): 5.10, Insulated: Yes, Width: 43.6 mm |
| Qty. | 20 ST | |

End bracket



Weidmüller's range of products includes end brackets that guarantee a permanent, reliable mounting on the terminal rail and prevent sliding. Versions with and without screws are available. The end brackets include marking options, also for group markers, and also a test plug holder.

General ordering data

| | | |
|------------|----------------------------|-----------------------|
| Type | AEB 35 SC/1 | Version |
| Order No. | 1991920000 | A-series, End bracket |
| GTIN (EAN) | 4050118376722 | |
| Qty. | 50 ST | |
| Type | AEB 35 SC/1 BK | Version |
| Order No. | 2475310000 | A-series, End bracket |
| GTIN (EAN) | 4050118487114 | |
| Qty. | 50 ST | |
| Type | AEB 35 SC/1 RM | Version |
| Order No. | 3112300000 | A-series, End bracket |
| GTIN (EAN) | 4099987196413 | |
| Qty. | 50 ST | |

S2T 2.5 8C VL

Weidmüller Interface GmbH & Co. KG
 Klingenbergstraße 26
 D-32758 Detmold
 Germany

www.weidmueller.com

Accessories

| | | |
|------------|----------------------------|-----------------------|
| Type | AEB 35 SCL/1 V0 | Version |
| Order No. | 2661280000 | A-series, End bracket |
| GTIN (EAN) | 4050118702163 | |
| Qty. | 20 ST | |
| Type | AEB 35 SCL/1 V0 BK | Version |
| Order No. | 2661300000 | A-series, End bracket |
| GTIN (EAN) | 4050118702187 | |
| Qty. | 20 ST | |
| Type | AEB 35 SCL/1 V0 GY | Version |
| Order No. | 2661290000 | A-series, End bracket |
| GTIN (EAN) | 4050118702170 | |
| Qty. | 20 ST | |

End plates and partition plates



Partition plates and end plates are essential accessories for terminal blocks. Partition plates provide optical and electrical separation of different potentials and functional groups, increasing safety and ensuring a clear structure inside the control cabinet. End plates close the terminal block row on the sides, protect against contact with live parts, and ensure a clean, stable finish. Both components are precisely matched to the respective Weidmüller terminal block series, contributing to safe, compliant, and professional wiring.

General ordering data

| | | |
|------------|----------------------------|---|
| Type | SEP 2T 2.5 8C | Version |
| Order No. | 3093260000 | End plate for terminals, dark beige, Height: 101 mm, Width: 5.1 mm, |
| GTIN (EAN) | 4099987110228 | V-0, Wemid, Snap-on: Yes |
| Qty. | 20 ST | |

Testadapter and testsockets



Test adapters and test plugs are used for the electrical connection between terminal blocks and the test equipment. In this way, an electrical contact can be established in the wired state and measurements can be done easily.

General ordering data

| | | |
|------------|----------------------------|---|
| Type | ATPG 2.5 M-R | Version |
| Order No. | 1991960000 | Test adapter (terminal), 1.5 mm ² , 250 V, 0.2 A |
| GTIN (EAN) | 4050118376685 | |
| Qty. | 50 ST | |
| Type | ATPG 2.5/3 | Version |
| Order No. | 2041190000 | Test adapter (terminal), 1.5 mm ² , 250 V, 0.2 A |
| GTIN (EAN) | 4050118409604 | |
| Qty. | 25 ST | |

S2T 2.5 8C VL

Weidmüller Interface GmbH & Co. KG
 Klingenbergstraße 26
 D-32758 Detmold
 Germany

www.weidmueller.com

Accessories

| | | | |
|------------|----------------------------|---|--|
| Type | ATPG 2.5/5 | Version | |
| Order No. | 2041180000 | Test adapter (terminal), 1.5 mm ² , 250 V, 0.2 A | |
| GTIN (EAN) | 4050118409505 | | |
| Qty. | 25 ST | | |

Blank



The Dekafix (DEK) marker is the universal marker for all conductor and plug-in connectors as well as for electronic sub-assemblies. The system is ideal for short number sequences and covers a wide range of ready-printed markers.

Strips for fast installation in only one work step. The printing is easy to read, rich in contrast and available in various widths.

- Large range of ready-to-use markers
 - Strips for fast installation
 - Terminal markers, suitable for all Weidmüller cable connectors
 - Available as blank MultiCard or with standard printing
- For custom printing: Please send us a file of our labeling software M-Print PRO or M-Print PRO Online (without installation) for your labeling specifications.

General ordering data

| | | | |
|------------|----------------------------|---|--|
| Type | DEK 5/5 MC NE BL | Version | |
| Order No. | 1609801693 | Dekafix, Terminal marker, 5 x 5 mm, Pitch in mm (P): 5.00 | |
| GTIN (EAN) | 4008190397166 | Weidmueller, blue | |
| Qty. | 1000 ST | | |
| Type | DEK 5/5 MC NE BR | Version | |
| Order No. | 1249870000 | Dekafix, Terminal marker, 5 x 5 mm, Pitch in mm (P): 5.00 | |
| GTIN (EAN) | 4050118051865 | Weidmueller, brown | |
| Qty. | 1000 ST | | |
| Type | DEK 5/5 MC NE GE | Version | |
| Order No. | 1609801687 | Dekafix, Terminal marker, 5 x 5 mm, Pitch in mm (P): 5.00 | |
| GTIN (EAN) | 4008190397135 | Weidmueller, yellow | |
| Qty. | 1000 ST | | |
| Type | DEK 5/5 MC NE GN | Version | |
| Order No. | 1609801688 | Dekafix, Terminal marker, 5 x 5 mm, Pitch in mm (P): 5.00 | |
| GTIN (EAN) | 4008190397142 | Weidmueller, green | |
| Qty. | 1000 ST | | |
| Type | DEK 5/5 MC NE GR | Version | |
| Order No. | 1609801691 | Dekafix, Terminal marker, 5 x 5 mm, Pitch in mm (P): 5.00 | |
| GTIN (EAN) | 4008190397159 | Weidmueller, grey | |
| Qty. | 1000 ST | | |
| Type | DEK 5/5 MC NE OR | Version | |
| Order No. | 1238340000 | Dekafix, Terminal marker, 5 x 5 mm, Pitch in mm (P): 5.00 | |
| GTIN (EAN) | 4050118062632 | Weidmueller, orange | |
| Qty. | 1000 ST | | |
| Type | DEK 5/5 MC NE RT | Version | |
| Order No. | 1609801686 | Dekafix, Terminal marker, 5 x 5 mm, Pitch in mm (P): 5.00 | |
| GTIN (EAN) | 4008190397128 | Weidmueller, red | |
| Qty. | 1000 ST | | |

S2T 2.5 8C VL

Weidmüller Interface GmbH & Co. KG

Klingenbergstraße 26
D-32758 Detmold
Germany

www.weidmueller.com

Accessories

| | | |
|------------|----------------------------|--|
| Type | DEK 5/5 MC NE SW | Version |
| Order No. | 1457550000 | Dekafix, Terminal marker, 5 x 5 mm, Pitch in mm (P): 5.00 |
| GTIN (EAN) | 4050118263817 | Weidmueller, black |
| Qty. | 1000 ST | |
| Type | DEK 5/5 MC NE VI | Version |
| Order No. | 1249860000 | Dekafix, Terminal marker, 5 x 5 mm, Pitch in mm (P): 5.00 |
| GTIN (EAN) | 4050118042764 | Weidmueller, violet |
| Qty. | 1000 ST | |
| Type | DEK 5/5 MC NE WS | Version |
| Order No. | 1609801044 | Dekafix, Terminal marker, 5 x 5 mm, Pitch in mm (P): 5.00 |
| GTIN (EAN) | 4008190397111 | Weidmueller, white |
| Qty. | 1000 ST | |
| Type | DEK 5/5 S MC NE WS | Version |
| Order No. | 1341620000 | Dekafix, Terminal marker, 5 x 5 mm, Pitch in mm (P): 5.00 |
| GTIN (EAN) | 4050118145793 | Weidmueller, white |
| Qty. | 400 ST | |
| Type | WS 10/5 M MC NE WS | Version |
| Order No. | 1792000000 | WS, Terminal marker, 10 x 5 mm, Pitch in mm (P): 5.00 Weidmueller, |
| GTIN (EAN) | 4032248223862 | Allen-Bradley, white |
| Qty. | 720 ST | |
| Type | WS 10/5 M PLUS MC NE WS | Version |
| Order No. | 2003770000 | WS, Terminal marker, 10 x 5 mm, Pitch in mm (P): 5.00 Weidmueller, |
| GTIN (EAN) | 4050118424447 | Allen-Bradley, white |
| Qty. | 600 ST | |
| Type | WS 10/5 MC NE BL | Version |
| Order No. | 1773531693 | WS, Terminal marker, 10 x 5 mm, Pitch in mm (P): 5.00 Weidmueller, |
| GTIN (EAN) | 4032248141814 | Allen-Bradley, blue |
| Qty. | 720 ST | |
| Type | WS 10/5 MC NE GE | Version |
| Order No. | 1773531687 | WS, Terminal marker, 10 x 5 mm, Pitch in mm (P): 5.00 Weidmueller, |
| GTIN (EAN) | 4032248141753 | Allen-Bradley, yellow |
| Qty. | 720 ST | |
| Type | WS 10/5 MC NE RT | Version |
| Order No. | 1773531686 | WS, Terminal marker, 10 x 5 mm, Pitch in mm (P): 5.00 Weidmueller, |
| GTIN (EAN) | 4032248141746 | Allen-Bradley, red |
| Qty. | 720 ST | |
| Type | WS 10/5 MC NE WS | Version |
| Order No. | 1635000000 | WS, Terminal marker, 10 x 5 mm, Pitch in mm (P): 5.00 Weidmueller, |
| GTIN (EAN) | 4008190261948 | Allen-Bradley, white |
| Qty. | 720 ST | |
| Type | WS 10/5 PLUS MC NE WS | Version |
| Order No. | 1046380000 | WS, Terminal marker, 10 x 5 mm, Pitch in mm (P): 5.00 Weidmueller, |
| GTIN (EAN) | 4032248782086 | Allen-Bradley, white |
| Qty. | 600 ST | |
| Type | WS 8/5 MC NE BL | Version |
| Order No. | 1773521693 | WS, Terminal marker, 8 x 5 mm, Pitch in mm (P): 5.00 Weidmueller, |
| GTIN (EAN) | 4032248141715 | Allen-Bradley, blue |
| Qty. | 720 ST | |
| Type | WS 8/5 MC NE GE | Version |
| Order No. | 1773521687 | WS, Terminal marker, 8 x 5 mm, Pitch in mm (P): 5.00 Weidmueller, |
| GTIN (EAN) | 4032248141548 | Allen-Bradley, yellow |
| Qty. | 720 ST | |

S2T 2.5 8C VL

Weidmüller Interface GmbH & Co. KG
 Klingenbergstraße 26
 D-32758 Detmold
 Germany

www.weidmueller.com

Accessories

| | | |
|------------|----------------------------|---|
| Type | WS 8/5 MC NE OR | Version |
| Order No. | 1773521690 | WS, Terminal marker, 8 x 5 mm, Pitch in mm (P): 5.00 Weidmueller, |
| GTIN (EAN) | 4032248143092 | Allen-Bradley, orange |
| Qty. | 720 ST | |
| Type | WS 8/5 MC NE RT | Version |
| Order No. | 1773521686 | WS, Terminal marker, 8 x 5 mm, Pitch in mm (P): 5.00 Weidmueller, |
| GTIN (EAN) | 4032248141531 | Allen-Bradley, red |
| Qty. | 720 ST | |
| Type | WS 8/5 MC NE WS | Version |
| Order No. | 1640740000 | WS, Terminal marker, 8 x 5 mm, Pitch in mm (P): 5.00 Weidmueller, |
| GTIN (EAN) | 4008190279103 | Allen-Bradley, white |
| Qty. | 720 ST | |
| Type | WS 8/5 PLUS MC NE WS | Version |
| Order No. | 1951870000 | WS, Terminal marker, 8 x 5 mm, Pitch in mm (P): 5.00 Weidmueller, |
| GTIN (EAN) | 4032248631605 | Allen-Bradley, white |
| Qty. | 600 ST | |

Marker holder



The marker holder offer the possibility of additional mounting of standard markers with a pitch of 5 or 5.1 mm. The angled holders can be optionally snapped together and could be mounted in all standard marking channels of the Klippon® Connect modular terminal blocks. Fitting marker types could be found under the respective accessories of the designation marking holder.

General ordering data

| | | |
|------------|----------------------------|----------------------------|
| Type | BZT 1 WS 10/5 | Version |
| Order No. | 1805490000 | Accessories, Marker holder |
| GTIN (EAN) | 4032248270231 | |
| Qty. | 100 ST | |
| Type | BZT 1 ZA WS 10/5 | Version |
| Order No. | 1805520000 | Accessories, Marker holder |
| GTIN (EAN) | 4032248270248 | |
| Qty. | 100 ST | |

Testadapter and testsockets



Test adapters and test plugs are used for the electrical connection between terminal blocks and the test equipment. In this way, an electrical contact can be established in the wired state and measurements can be done easily.

Accessories

General ordering data

| | | | |
|------------|----------------------------|--|--|
| Type | FZS 2/4 RT/80 SAKT4 | Version | |
| Order No. | 1276300000 | Plug (terminal), Plug-in connection, 2 mm ² , Number of connections: 2, | |
| GTIN (EAN) | 4008190026080 | Number of poles: 1, Width: 9 mm | |
| Qty. | 20 ST | | |