

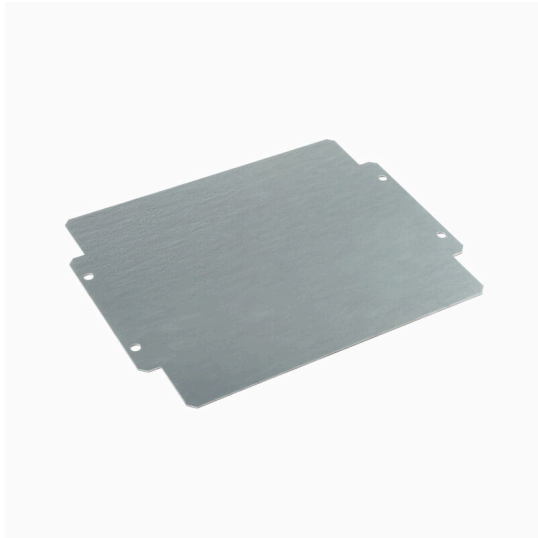
**MOPL K71 STAHL****Weidmüller Interface GmbH & Co. KG**

Klingenbergstraße 26

D-32758 Detmold

Germany

www.weidmueller.com

**Product image**

The system accessories for the Klippon® K enclosure series allows you to easily adapt the enclosures to meet the specific requirements of every application.

- DIN Rails TS 35 and TS15
- Mounting plates
- Hinges
- Wall-mounted holder

Weidmüller can manufacture and supply this enclosure - according to customer specifications - fitted with all necessary terminals and cable glands.

**General ordering data**

Version	Klippon K (aluminium empty enclosure), Mounting plate, Mounting plate, Height: 213 mm, Width: 264 mm, Depth: 2 mm, Basic material: Sheet steel, galvanized, galvanized, silver
Order No.	<a href="#">3073140000</a>
Type	MOPL K71 STAHL
GTIN (EAN)	4008190858070
Qty.	1 items

## MOPL K71 STAHL

**Weidmüller Interface GmbH & Co. KG**  
 Klingenbergstraße 26  
 D-32758 Detmold  
 Germany

www.weidmueller.com

## Technical data

## Approvals

ROHS	Conform
------	---------

## Dimensions and weights

Depth	2 mm	Depth (inches)	0.0787 inch
Height	213 mm	Height (inches)	8.3858 inch
Width	264 mm	Width (inches)	10.3937 inch
Mounting dimension - height	80 mm	Mounting dimension - width	250 mm
Net weight	789 g		

## Temperatures

Operating temperature	
-----------------------	--

## Environmental Product Compliance

RoHS Compliance Status	Compliant without exemption
REACH SVHC	No SVHC above 0.1 wt%

## General information

Material thickness	2 mm	Type of fixing	when screwed in
Surface finish	galvanized	Basic material	Sheet steel, galvanized

## General information on accessories

Material thickness	2 mm	Type of fixing	when screwed in
Surface finish	galvanized	Basic material	Sheet steel, galvanized
Mounting dimension - width	250 mm	Mounting dimension - height	80 mm

## Classifications

ETIM 8.0	EC000213	ETIM 9.0	EC000213
ETIM 10.0	EC000213	ECLASS 14.0	27-40-06-39
ECLASS 15.0	27-40-06-39		