

CSM P 4CO

Weidmüller Interface GmbH & Co. KG

Klingenbergstraße 26

D-32758 Detmold

Germany

www.weidmueller.com



Relay sockets for the CUBESERIES CRM relays

- 4 CO output version for 2 CO and 4 CO relays
- Screw and PUSH IN connection
- PUSH IN sockets with wide pushers for screwdrivers up to 1.0 x 5.5 mm blade size
- Various cross connection possibilities
- Matching accessories such as cross-connections, retaining clips and LED modules

General ordering data

Version	CUBESERIES, Relay socket, Number of contacts: 4, CO contact, Continuous current: 8 A, PUSH IN
Order No.	3053140000
Type	CSM P 4CO
GTIN (EAN)	4099987022965
Qty.	10 items

CSM P 4CO

Weidmüller Interface GmbH & Co. KG

Klingenbergstraße 26

D-32758 Detmold

Germany

www.weidmueller.com

Technical data

Approvals

Approvals



ROHS Conform

UL File Number Search [UL Website](#)

Certificate No. (cURus) E223759

Dimensions and weights

Depth	45.9 mm	Depth (inches)	1.8071 inch
Height	97 mm	Height (inches)	3.8189 inch
Width	31 mm	Width (inches)	1.2205 inch
Net weight	75 g		

Temperatures

Storage temperature	Ambient temperature	-40 °C...70 °C
Operating temperature	Humidity	40 °C / 93 % rel. humidity, no condensation

Environmental Product Compliance

RoHS Compliance Status	Compliant without exemption
REACH SVHC	No SVHC above 0.1 wt%

Rated data UL

Certificate No. (cURus) E223759

Control side

Status indicator No

Load side

Rated switching voltage	250 V AC	Continuous current	12 A @ 2 CO; 8 A @ 4 CO
Max. switching voltage, AC	300 V	Contact type	4 CO contact

General data

Operating altitude ≤ 2000 m, above sea level

Mounting rail TS 35

Colour black

UL 94 flammability rating V-0

UL94 flammability rating component	Component	Socket
	UL94 flammability rating	V-0
	Component	Housing
	UL94 flammability rating	V-0

Insulation coordination

Rated voltage	300 V	Pollution severity	2
Surge voltage category	II	Insulating material group	IIIa

CSM P 4C0

Weidmüller Interface GmbH & Co. KG

Klingenbergstraße 26
D-32758 Detmold
Germany

www.weidmueller.com

Technical data

Dielectric strength for control side - load side	4 kVeff / 1 Min.	Dielectric strength of neighbouring contacts	3 KVeFF / 1 Min.
Dielectric strength to mounting rail	3 kVeff / 1 min.	Impulse withstand voltage	3 kV
Protection degree	IP20		

Further details of approvals / standards

Certificate No. (CSA)	607178-80219312	Certificate No. (cURus)	E223759
-----------------------	-----------------	-------------------------	---------

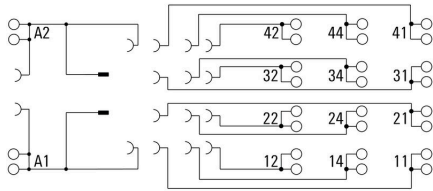
Connection data

Wire connection method	PUSH IN	Stripping length, rated connection	8 mm
Clamping range, rated connection	1.5 mm ²	Clamping range, min.	0.5 mm ²
Clamping range, max.	1.5 mm ²	Wire cross-section, solid, min.	0.5 mm ²
Wire cross-section, solid, min. (AWG)	AWG 20	Wire cross-section, solid, max. (AWG)	AWG 16
Wire connection cross section, finely stranded, max.	1.5 mm ²	Wire cross-section, finely stranded, min. (AWG)	AWG 24
Wire cross-section, finely stranded, max. (AWG)	AWG 16	Wire connection cross-section, finely stranded with wire-end ferrules DIN 46228/4, max.	1 mm ²
Twin wire-end ferrules, max.	1.5 mm ²	Blade size	0.6 x 3.5 mm

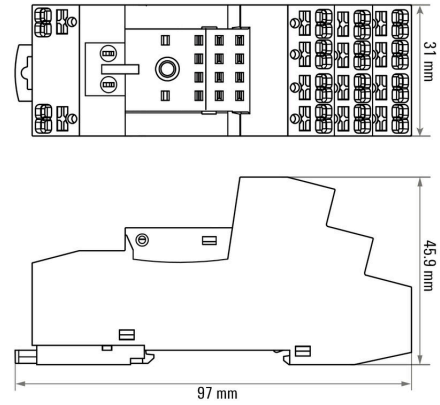
Classifications

ETIM 8.0	EC001456	ETIM 9.0	EC001456
ETIM 10.0	EC001456	ECLASS 14.0	27-37-16-03
ECLASS 15.0	27-37-16-03		

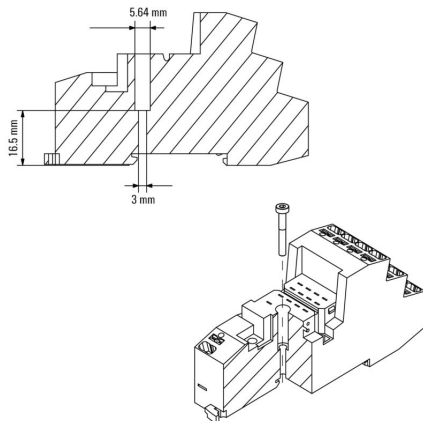
Wiring diagram



Dimensional drawing

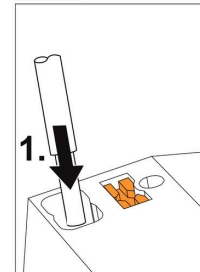


Dimensional drawing



Miscellaneous

Insert flexible and solid cables

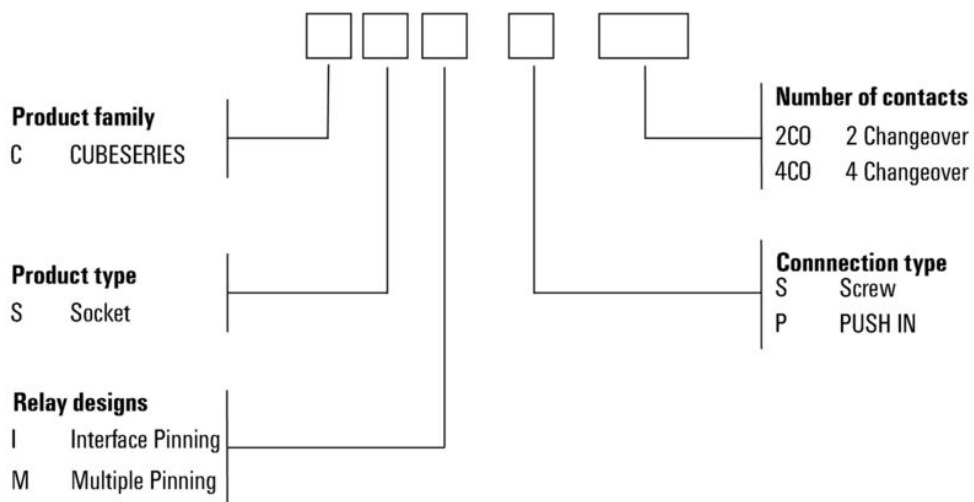


Solid wires can be inserted without opening the terminal.

Miscellaneous

Miscellaneous

Type code CUBESERIES socket versions



CSM P 4CO

Weidmüller Interface GmbH & Co. KG
 Klingenbergstraße 26
 D-32758 Detmold
 Germany

www.weidmueller.com

Accessories

Cross-connections



General ordering data

Type	CXX JMP 2P BL	Version
Order No.	3053260000	CUBESERIES, Cross-connector
GTIN (EAN)	4099987023085	
Qty.	30 ST	

Type	CXX JMP 2P RD	Version
Order No.	3053250000	CUBESERIES, Cross-connector
GTIN (EAN)	4099987023078	
Qty.	30 ST	

LED



General ordering data

Type	CXX L 61G	Version
Order No.	3053420000	CUBESERIES, LED module, Rated control voltage: 6...24 V UC, Plug-in connection
GTIN (EAN)	4099987023207	
Qty.	20 ST	

Type	CXX L 61R	Version
Order No.	3053410000	CUBESERIES, LED module, Rated control voltage: 6...24 V UC, Plug-in connection
GTIN (EAN)	4099987023191	
Qty.	20 ST	

Type	CXX L 62G	Version
Order No.	3053440000	CUBESERIES, LED module, Rated control voltage: 24...60 V UC, Plug-in connection
GTIN (EAN)	4099987023221	
Qty.	20 ST	

Type	CXX L 62R	Version
Order No.	3053430000	CUBESERIES, LED module, Rated control voltage: 24...60 V UC, Plug-in connection
GTIN (EAN)	4099987023214	
Qty.	20 ST	

CSM P 4CO

Weidmüller Interface GmbH & Co. KG
 Klingenbergstraße 26
 D-32758 Detmold
 Germany

www.weidmueller.com

Accessories

Type	CXX L 63G	Version
Order No.	3053460000	CUBESERIES, LED module, Rated control voltage: 110...230 V UC,
GTIN (EAN)	4099987023245	Plug-in connection
Qty.	20 ST	
Type	CXX L 63R	Version
Order No.	3053450000	CUBESERIES, LED module, Rated control voltage: 110...230 V UC,
GTIN (EAN)	4099987023238	Plug-in connection
Qty.	20 ST	

LED and free-wheel diode



General ordering data

Type	CXX LD 41G	Version
Order No.	3053310000	CUBESERIES, LED module with freewheel diode, Rated control voltage: 6...24 V DC, Plug-in connection
GTIN (EAN)	4099987023115	
Qty.	20 ST	
Type	CXX LD 41R	Version
Order No.	3053290000	CUBESERIES, LED module with freewheel diode, Rated control voltage: 6...24 V DC, Plug-in connection
GTIN (EAN)	4099987023108	
Qty.	20 ST	

LED and free-wheeling diode



General ordering data

Type	CXX LD 42G	Version
Order No.	3053340000	CUBESERIES, LED module with freewheel diode, Rated control voltage: 24...60 V DC, Plug-in connection
GTIN (EAN)	4099987023139	
Qty.	20 ST	

CSM P 4CO

Weidmüller Interface GmbH & Co. KG
 Klingenbergstraße 26
 D-32758 Detmold
 Germany

www.weidmueller.com

Accessories

LED and free-wheel diode



General ordering data

Type	CXX LD 42R	Version	
Order No.	3053320000	CUBESERIES, LED module with freewheel diode, Rated control	
GTIN (EAN)	4099987023 122	voltage: 24...60 V DC, Plug-in connection	
Qty.	20 ST		

LED and free-wheeling diode



General ordering data

Type	CXX LD 43G	Version	
Order No.	3053360000	CUBESERIES, LED module with freewheel diode, Rated control	
GTIN (EAN)	4099987023 153	voltage: 110...230 V DC, Plug-in connection	
Qty.	20 ST		

LED and free-wheel diode



General ordering data

Type	CXX LD 43R	Version	
Order No.	3053350000	CUBESERIES, LED module with freewheel diode, Rated control	
GTIN (EAN)	4099987023 146	voltage: 110...230 V DC, Plug-in connection	
Qty.	20 ST		

CSM P 4C0

Weidmüller Interface GmbH & Co. KG
 Klingenbergstraße 26
 D-32758 Detmold
 Germany

Accessories

www.weidmueller.com

Protection modules



General ordering data

Type	CXX D 21N	Version
Order No.	3053270000	CUBESERIES, Free-wheeling diode, Rated control voltage: 6...230 V
GTIN (EAN)	4099987023092	DC, Plug-in connection
Qty.	20 ST	
Type	CXX RC 51	Version
Order No.	3053370000	CUBESERIES, RC element, Rated control voltage: 6...24 V UC, Plug-in connection
GTIN (EAN)	4099987023160	
Qty.	20 ST	
Type	CXX RC 52	Version
Order No.	3053390000	CUBESERIES, RC element, Rated control voltage: 24...60 V UC, Plug-in connection
GTIN (EAN)	4099987023177	
Qty.	20 ST	
Type	CXX RC 53	Version
Order No.	3053400000	CUBESERIES, RC element, Rated control voltage: 110...230 V AC, Plug-in connection
GTIN (EAN)	4099987023184	
Qty.	20 ST	
Type	CXX V 71	Version
Order No.	3053470000	CUBESERIES, Protective varistor, Rated control voltage: 6...24 V AC, Plug-in connection
GTIN (EAN)	4099987023252	
Qty.	20 ST	
Type	CXX V 72	Version
Order No.	3053480000	CUBESERIES, Protective varistor, Rated control voltage: 110...130 V AC, Plug-in connection
GTIN (EAN)	4099987023269	
Qty.	20 ST	
Type	CXX V 73	Version
Order No.	3053490000	CUBESERIES, Protective varistor, Rated control voltage: 220...240 V AC, Plug-in connection
GTIN (EAN)	4099987023276	
Qty.	20 ST	

Cross-connections



CSM P 4CO

Weidmüller Interface GmbH & Co. KG
 Klingenbergstraße 26
 D-32758 Detmold
 Germany

www.weidmueller.com

Accessories

General ordering data

Type	CXM CCP 2P BL	Version
Order No.	3053230000	CUBESERIES, Cross-connector
GTIN (EAN)	4099987023054	
Qty.	20 ST	
Type	CXM CCP 2P RD	Version
Order No.	3053220000	CUBESERIES, Cross-connector
GTIN (EAN)	4099987023047	
Qty.	20 ST	
Type	CXM CCP 8P BL	Version
Order No.	3053210000	CUBESERIES, Cross-connector
GTIN (EAN)	4099987023030	
Qty.	10 ST	
Type	CXM CCP 8P RD	Version
Order No.	3053200000	CUBESERIES, Cross-connector
GTIN (EAN)	4099987023023	
Qty.	10 ST	

Retaining clips



Retaining clips for CUBESERIES CRI relays.

Plastic retaining clip:

- With relay ejector function
- Marking slots for MultiFit markers
- Fits on relays with and without test button

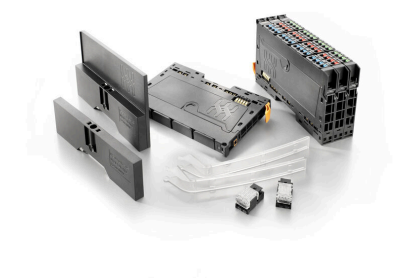
Metal retaining clip:

- For a strong hold of the relay in the socket

General ordering data

Type	CXM CLIP M	Version
Order No.	3053190000	CUBESERIES, Retaining clip
GTIN (EAN)	4099987023016	
Qty.	25 ST	
Type	CXM CLIP P	Version
Order No.	3053240000	CUBESERIES, Retaining clip
GTIN (EAN)	4099987023061	
Qty.	10 ST	

Accessories



System accessory

Discover a wide range of accessories for your u-remote system - the ideal addition to make your applications even more efficient and flexible.

CSM P 4CO

Weidmüller Interface GmbH & Co. KG
 Klingenbergstraße 26
 D-32758 Detmold
 Germany

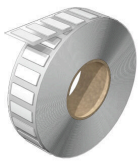
www.weidmueller.com

Accessories

General ordering data

Type	UR20-EBK-ACC	Version	
Order No.	1346610000	End bracket, ,	
GTIN (EAN)	4050118151596		
Qty.	5 ST		

ESG-FO 8/20



Guaranteed long service life: ESG

The multi-colour and multi-format labels have a strong adhesive layer to ensure the best possible adhesion to the underlying surface. Double laminated polyester makes the basic material very thin and yet extremely tear-resistant.

Your benefits with MultiMark

- "Different materials for various requirements"
- Can be used with equipment from many manufacturers
- Device markers with a familiar design

General ordering data

Type	ESG-FO 8/20 MM WS	Version	
Order No.	2620950000	ESG, Device markers, 8 x 20 mm, white	
GTIN (EAN)	4050118626032		
Qty.	1000 ST		