

## CXI CLIP HM

**Weidmüller Interface GmbH & Co. KG**

Klingenbergstraße 26

D-32758 Detmold

Germany

[www.weidmueller.com](http://www.weidmueller.com)



Retaining clips for CUBESERIES CRI relays.

Plastic retaining clip:

- With relay ejector function
- Marking slots for MultiFit markers
- Fits on relays with and without test button

Metal retaining clip:

- For a strong hold of the relay in the socket
- Individual versions for relays with and without test button

### General ordering data

Version	CUBESERIES, Retaining clip
Order No.	<a href="#">3052640000</a>
Type	CXI CLIP HM
GTIN (EAN)	4099987022460
Qty.	10 items

**CXI CLIP HM**

**Weidmüller Interface GmbH & Co. KG**  
 Klingenbergstraße 26  
 D-32758 Detmold  
 Germany

www.weidmueller.com

**Technical data**

**Approvals**

ROHS	Conform
------	---------

**Dimensions and weights**

Net weight	10 g
------------	------

**Temperatures**

Storage temperature	Operating temperature
---------------------	-----------------------

**Environmental Product Compliance**

RoHS Compliance Status	Compliant without exemption
REACH SVHC	No SVHC above 0.1 wt%

**General data**

Version	for CRI relays with test button	Basic material	metal
Colour	silver		

**Classifications**

ETIM 8.0	EC002586	ETIM 9.0	EC002586
ETIM 10.0	EC002586	ECLASS 14.0	27-37-16-92
ECLASS 15.0	27-37-16-92		

CXI CLIP HM

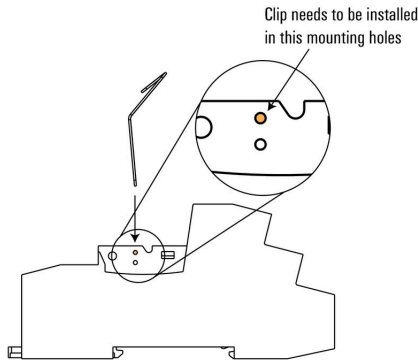
Weidmüller Interface GmbH & Co. KG  
Klingenbergstraße 26  
D-32758 Detmold  
Germany

Drawings

www.weidmueller.com

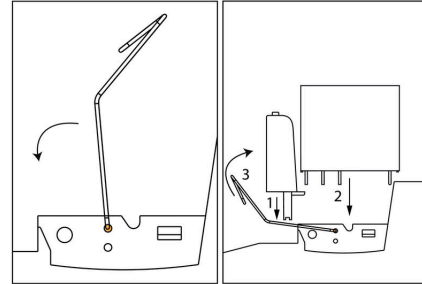
Example of use

**How to install a metal retaining clip**  
Metal retaining clip for CRI relay with test button



Example of use

**How to install a metal retaining clip**  
Metal retaining clip for CRI relay with test button



Pivot the clip downward to clear the mounting area

Insert the relay and module into the socket and lift the clip to secure the relay

Miscellaneous

**Type code CUBESERIES accessories versions**

