

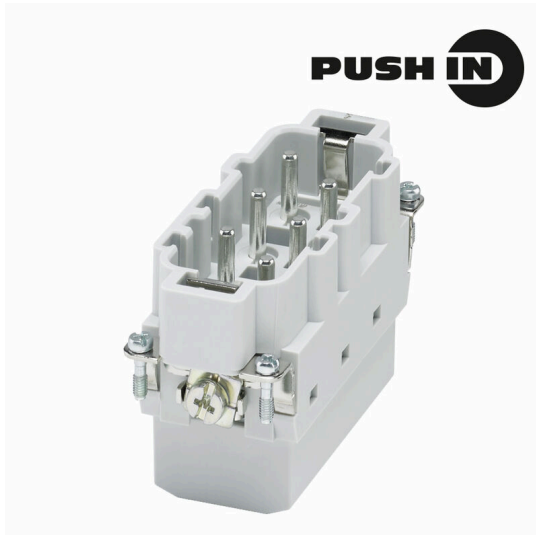
**HDC HSB 6 MP****Weidmüller Interface GmbH & Co. KG**

Klingenbergstraße 26

D-32758 Detmold

Germany

www.weidmueller.com



The HSB series enables you to carry 35A per contact simultaneously. Assembled with PUSH IN connections, for secure and reliable connections.

Number of poles: 6 - 12

Rated current: 35 A

Rated voltage: 400 V

**General ordering data**

Version	, Male, 400 V, 35 A, Number of poles: 6, PUSH IN with actuator, Installation size: 6
Order No.	<a href="#">3023960000</a>
Type	HDC HSB 6 MP
GTIN (EAN)	4099986946545
Qty.	1 items

## HDC HSB 6 MP

Weidmüller Interface GmbH &amp; Co. KG

Klingenbergstraße 26  
D-32758 Detmold  
Germany

www.weidmueller.com

## Technical data

## Approvals

Approvals



ROHS Conform

UL File Number Search [UL Website](#)

Certificate No. (cURus) E310075

## Dimensions and weights

Depth	84.5 mm	Depth (inches)	3.3268 inch
Height	32.5 mm	Height (inches)	1.2795 inch
Width	34 mm	Width (inches)	1.3386 inch
Length	84.5 mm	Length (inches)	3.3268 inch
Net weight	50 g		

## Temperatures

Limit temperature -40 °C ... 125 °C

## Environmental Product Compliance

RoHS Compliance Status Compliant without exemption

REACH SVHC No SVHC above 0.1 wt%

## Dimensions

Width 34 mm Total length base 84.5 mm

## General data

Number of poles	6
Plugging cycles, silver	≥ 500
Plugging cycles, gold	≥ 500
Type of connection	PUSH IN with actuator
Installation size	6
UL 94 flammability rating	V-0
Volume resistance	≤2 mΩ
Colour	beige
Insulation resistance	1010 Ω
Insulating material	PC glass-fibre reinforced (UL-listed and railway-certified)
Insulating material group	IIIa
Tightening torque, max. PE connection	2.5 Nm
Surface finish	Silver passivated
Type	Male
Surge voltage category	III
Pollution severity	3
Tightening torque, min. PE connection	2 Nm
Basic material	Copper alloy
Series	HSB
Rated voltage (DIN EN 61984)	400 V
Rated voltage according to UL/CSA	600 V AC/DC
Rated impulse voltage (DIN EN 61984)	6 kV
Rated current (DIN EN 61984)	35 A
Rated current (UR)	Wire connection cross section AWG AWG 10

Creation date 05.03.2026 01:55:55 MEZ

Catalogue status / Drawings

## HDC HSB 6 MP

Weidmüller Interface GmbH &amp; Co. KG

Klingenbergstraße 26  
D-32758 Detmold  
Germany

[www.weidmueller.com](http://www.weidmueller.com)

## Technical data

	Rated current	35 A
	Wire connection cross section AWG	AWG 12
	Rated current	8 A
	Wire connection cross section AWG	AWG 14
	Rated current	8 A
	Wire connection cross section AWG	AWG 16
	Rated current	8 A
	Wire connection cross section AWG	AWG 18
	Rated current	8 A
	Wire connection cross section AWG	AWG 20
	Rated current	8 A
Rated voltage conductor-PE (III/3)	400 V	
Rated current (cUR)	Wire connection cross section AWG	AWG 10
	Rated current	8 A
	Wire connection cross section AWG	AWG 12
	Rated current	8 A
	Wire connection cross section AWG	AWG 14
	Rated current	8 A
	Wire connection cross section AWG	AWG 16
	Rated current	8 A
	Wire connection cross section AWG	AWG 18
	Rated current	8 A
Free from halogens	true	
Low smoke acc. DIN EN 45545-2	Yes	
BG	6	
Number of power contacts	6	
Rated voltage conductor-conductor (III/3)	690 V	
Protection degree	IP20	

## Connection data PE

Connection type PE	Screw connection	Blade size, slotted (PE connection)	1 x 5.5
Stripping length PE connection	12 mm	Tightening torque, max. PE connection	2.5 Nm
Tightening torque, min. PE connection	2 Nm	Fixing screw	M 5
Rated cross-section	6 mm <sup>2</sup>	Wire cross section, AWG (PE), min.	AWG 20
Wire cross section, AWG (PE), max.	AWG 10		

## Power contact

Rated voltage (DIN EN 61984), power contact	6 V	Rated current (DIN EN 61984), power contact	35 A
---	-----	---	------

## Version

Blade size, slotted (screw connection)	SD 0.8 x 4.0	Type of connection	PUSH IN with actuator
Installation size	6	Volume resistance	≤2 mΩ
Conductor cross-section, max.	6 mm <sup>2</sup>	Conductor cross-section, min.	1.5 mm <sup>2</sup>
Surface finish	Silver passivated	Basic material	Copper alloy
BG	6		

## Classifications

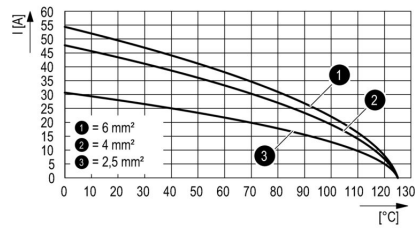
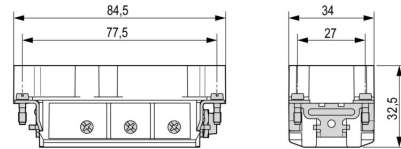
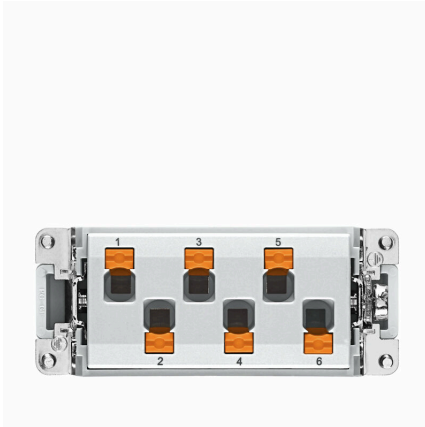
ETIM 8.0	EC000438	ETIM 9.0	EC000438
ETIM 10.0	EC000438	ECLASS 14.0	27-44-02-05
ECLASS 15.0	27-44-02-05		

HDC HSB 6 MP

Weidmüller Interface GmbH & Co. KG  
Klingenbergstraße 26  
D-32758 Detmold  
Germany

Drawings

www.weidmueller.com



## HDC HSB 6 MP

Weidmüller Interface GmbH &amp; Co. KG

Klingenbergstraße 26

D-32758 Detmold

Germany

www.weidmueller.com

## Accessories

## Slotted screwdriver



VDE insulated slot-head screwdriver, SDI DIN 7437, ISO 2380/2, drive output acc. to DIN 5264, ISO 2380/1.  
SoftFinish grip

## General ordering data

Type	SDIS 0.6X3.5X100	Version
Order No.	<a href="#">9008390000</a>	Screwdriver, Screwdriver
GTIN (EAN)	4032248056354	
Qty.	1 ST	
Type	SDS 0.6X3.5X100	Version
Order No.	<a href="#">9008330000</a>	Screwdriver, Screwdriver
GTIN (EAN)	4032248056286	
Qty.	1 ST	
Type	SDIS 0.8X4.0X100	Version
Order No.	<a href="#">9008400000</a>	Screwdriver, Screwdriver
GTIN (EAN)	4032248056361	
Qty.	1 ST	
Type	SDS 0.8X4.5X125	Version
Order No.	<a href="#">9009020000</a>	Screwdriver, Screwdriver
GTIN (EAN)	4032248266883	
Qty.	1 ST	

## Crosshead screwdriver Pozidriv



VDE insulated crosshead screwdriver type Pozidriv SDIK PZ DIN 7438, ISO 8764/2-PZ, output to ISO 8764-PZ,  
SoftFinish grip

## General ordering data

Type	SDIK PZ1	Version
Order No.	<a href="#">9008900000</a>	Screwdriver, Screwdriver
GTIN (EAN)	4032248266685	
Qty.	1 ST	
Type	SDK PZ1	Version
Order No.	<a href="#">9008530000</a>	Screwdriver, Screwdriver
GTIN (EAN)	4032248056521	
Qty.	1 ST	

**HDC HSB 6 MP**

**Weidmüller Interface GmbH & Co. KG**  
 Klingenbergstraße 26  
 D-32758 Detmold  
 Germany

www.weidmueller.com

**Accessories**

**Slotted screwdriver**



VDE insulated slot-head screwdriver, SDI DIN 7437, ISO 2380/2, drive output acc. to DIN 5264, ISO 2380/1. SoftFinish grip

**General ordering data**

Type	SDIS 1.0X5.5X125	Version	
Order No.	<a href="#">9008410000</a>	Screwdriver, Screwdriver	
GTIN (EAN)	4032248056378		
Qty.	1 ST		

Type	SDS 1.0X5.5X150	Version	
Order No.	<a href="#">9008350000</a>	Screwdriver, Screwdriver	
GTIN (EAN)	4032248056316		
Qty.	1 ST		

**Crosshead screwdriver Pozidriv**



VDE insulated crosshead screwdriver type Pozidriv SDIK PZ DIN 7438, ISO 8764/2-PZ, output to ISO 8764-PZ, SoftFinish grip

**General ordering data**

Type	SDIK PZ2	Version	
Order No.	<a href="#">9008890000</a>	Screwdriver, Screwdriver	
GTIN (EAN)	4032248266661		
Qty.	1 ST		

Type	SDK PZ2	Version	
Order No.	<a href="#">9008540000</a>	Screwdriver, Screwdriver	
GTIN (EAN)	4032248056538		
Qty.	1 ST		

## HDC HSB 6 MP

**Weidmüller Interface GmbH & Co. KG**  
 Klingenbergstraße 26  
 D-32758 Detmold  
 Germany

[www.weidmueller.com](http://www.weidmueller.com)

## Accessories

## DSTV



Various accessories are available for our inserts. This includes coding elements for the inserts.

## General ordering data

Type	DSTV COBU5	Version	
Order No.	<a href="#">1471500000</a>	Heavy-duty connectors, Accessories, Coding element	
GTIN (EAN)	4008190178543		
Qty.	100 ST		
Type	DSTV COST4	Version	
Order No.	<a href="#">1471300000</a>	Heavy-duty connectors, Accessories, Coding System	
GTIN (EAN)	4008190017354		
Qty.	100 ST		

## Size 6



The HSB series enables you to carry 35A per contact simultaneously. Assembled with PUSH IN connections, for secure and reliable connections.

Number of poles: 6 - 12

Rated current: 35 A

Rated voltage: 400 V

## General ordering data

Type	HDC HSB 6 FP	Version	
Order No.	<a href="#">3023970000</a>	, Female, 400 V, 35 A, Number of poles: 6, PUSH IN with actuator,	
GTIN (EAN)	4099986946552	Installation size: 6	
Qty.	1 ST		