

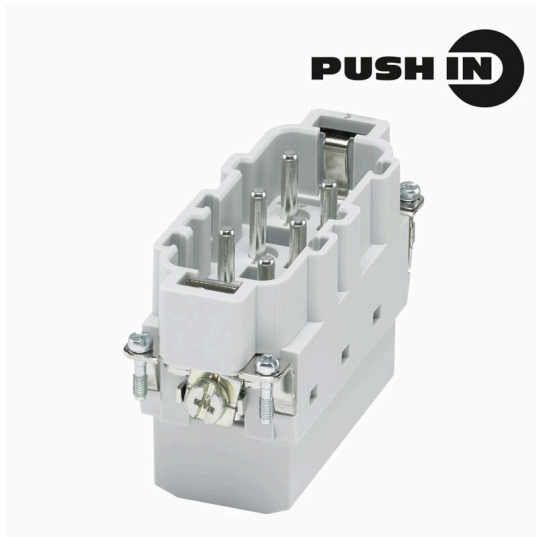
HDC HSB 6 MP**Weidmüller Interface GmbH & Co. KG**

Klingenbergstraße 26

D-32758 Detmold

Germany

www.weidmueller.com



The HSB series enables you to carry 35A per contact simultaneously. Assembled with PUSH IN connections, for secure and reliable connections.

Number of poles: 6 - 12

Rated current: 35 A

Rated voltage: 400 V

General ordering data

Version	, Male, 400 V, 35 A, Number of poles: 6, PUSH IN with actuator, Installation size: 6
Order No.	3023960000
Type	HDC HSB 6 MP
GTIN (EAN)	4099986946545
Qty.	1 items

HDC HSB 6 MP

Weidmüller Interface GmbH & Co. KG

Klingenbergstraße 26

D-32758 Detmold

Germany

www.weidmueller.com

Technical data

Approvals

Approvals



ROHS Conform

UL File Number Search [UL Website](#)

Certificate No. (cURus) E310075

Dimensions and weights

Depth	84.5 mm	Depth (inches)	3.3268 inch
Height	32.5 mm	Height (inches)	1.2795 inch
Width	34 mm	Width (inches)	1.3386 inch
Length	84.5 mm	Length (inches)	3.3268 inch
Net weight	50 g		

Temperatures

Limit temperature -40 °C ... 125 °C

Environmental Product Compliance

RoHS Compliance Status Compliant without exemption

REACH SVHC No SVHC above 0.1 wt%

Dimensions

Width	34 mm	Total length base	84.5 mm
-------	-------	-------------------	---------

General data

Number of poles	6		
Plugging cycles, silver	≥ 500		
Plugging cycles, gold	≥ 500		
Type of connection	PUSH IN with actuator		
Installation size	6		
UL 94 flammability rating	V-0		
Volume resistance	≤2 mΩ		
Colour	beige		
Insulation resistance	1010 Ω		
Insulating material	PC glass-fibre reinforced (UL-listed and railway-certified)		
Insulating material group	IIIa		
Tightening torque, max. PE connection	2.5 Nm		
Surface finish	Silver passivated		
Type	Male		
Surge voltage category	III		
Pollution severity	3		
Tightening torque, min. PE connection	2 Nm		
Basic material	Copper alloy		
Series	HSB		
Rated voltage (DIN EN 61984)	400 V		
Rated voltage according to UL/CSA	600 V AC/DC		
Rated impulse voltage (DIN EN 61984)	6 kV		
Rated current (DIN EN 61984)	35 A		
Rated current (UR)	Wire connection cross section AWG	AWG 10	

Creation date 24.02.2026 07:00:29 MEZ

Catalogue status / Drawings

HDC HSB 6 MP

Weidmüller Interface GmbH & Co. KG

Klingenbergstraße 26

D-32758 Detmold

Germany

www.weidmueller.com

Technical data

	Rated current	35 A
	Wire connection cross section AWG	AWG 12
	Rated current	8 A
	Wire connection cross section AWG	AWG 14
	Rated current	8 A
	Wire connection cross section AWG	AWG 16
	Rated current	8 A
	Wire connection cross section AWG	AWG 18
	Rated current	8 A
	Wire connection cross section AWG	AWG 20
	Rated current	8 A
Rated voltage conductor-PE (III/3)	400 V	
Rated current (cUR)	Wire connection cross section AWG	AWG 10
	Rated current	8 A
	Wire connection cross section AWG	AWG 12
	Rated current	8 A
	Wire connection cross section AWG	AWG 14
	Rated current	8 A
	Wire connection cross section AWG	AWG 16
	Rated current	8 A
	Wire connection cross section AWG	AWG 18
	Rated current	8 A
Free from halogens	true	
Low smoke acc. DIN EN 45545-2	Yes	
BG	6	
Number of power contacts	6	
Rated voltage conductor-conductor (III/3)	690 V	
Protection degree	IP20	

Connection data PE

Connection type PE	Screw connection	Blade size, slotted (PE connection)	1 x 5.5
Stripping length PE connection	12 mm	Tightening torque, max. PE connection	2.5 Nm
Tightening torque, min. PE connection	2 Nm	Fixing screw	M 5
Rated cross-section	6 mm ²	Wire cross section, AWG (PE), min.	AWG 20
Wire cross section, AWG (PE), max.	AWG 10		

Power contact

Rated voltage (DIN EN 61984), power contact	6 V	Rated current (DIN EN 61984), power contact	35 A
---	-----	---	------

Version

Blade size, slotted (screw connection)	SD 0.8 x 4.0	Type of connection	PUSH IN with actuator
Installation size	6	Volume resistance	≤2 mΩ
Conductor cross-section, max.	6 mm ²	Conductor cross-section, min.	1.5 mm ²
Surface finish	Silver passivated	Basic material	Copper alloy
BG	6		

Classifications

ETIM 8.0	EC000438	ETIM 9.0	EC000438
ETIM 10.0	EC000438	ECLASS 14.0	27-44-02-05
ECLASS 15.0	27-44-02-05		

HDC HSB 6 MP

Weidmüller Interface GmbH & Co. KG
Klingenbergstraße 26
D-32758 Detmold
Germany

Drawings

www.weidmueller.com

