

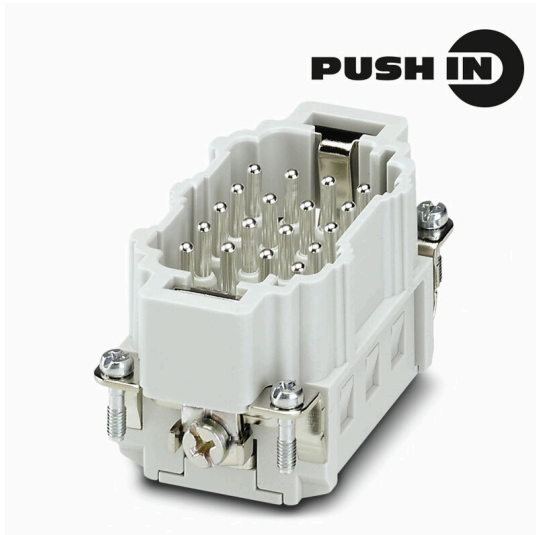
HDC HEE 18 MP**Weidmüller Interface GmbH & Co. KG**

Klingenbergstraße 26

D-32758 Detmold

Germany

www.weidmueller.com



The HEE series features high-density contacts and is designed based on the established HE inserts. The wire connection level is designed as a PUSH IN contact.

Number of poles: 10 - 64

Rated current: 16 A

Rated voltage: 500 V

General ordering data

Version	HDC insert, Male, 500 V, 16 A, Number of poles: 18, PUSH IN with actuator, Installation size: 4
Order No.	3023920000
Type	HDC HEE 18 MP
GTIN (EAN)	4099986946507
Qty.	1 items

HDC HEE 18 MP

Weidmüller Interface GmbH & Co. KG
 Klingenbergstraße 26
 D-32758 Detmold
 Germany

www.weidmueller.com

Technical data

Approvals

Approvals



ROHS	Conform
UL File Number Search	UL Website
Certificate No. (cURus)	E310075

Dimensions and weights

Depth	64 mm	Depth (inches)	2.5197 inch
Height	33.2 mm	Height (inches)	1.3071 inch
Width	34 mm	Width (inches)	1.3386 inch
Length	64 mm	Length (inches)	2.5197 inch
Net weight	75 g		

Temperatures

Limit temperature	-40 °C ... 125 °C
-------------------	-------------------

Environmental Product Compliance

RoHS Compliance Status	Compliant without exemption	
REACH SVHC	No SVHC above 0.1 wt%	
Chemical resistance	Substance	Acetone
	Chemical resistance	Resistant
	Substance	Ammonia, watery
	Chemical resistance	Conditionally resistant
	Substance	Petrol
	Chemical resistance	Resistant
	Substance	Benzene
	Chemical resistance	Resistant
	Substance	Diesel oil
	Chemical resistance	Conditionally resistant
	Substance	Acetic acid, concentrated
	Chemical resistance	Resistant
	Substance	Potassium hydroxide
	Chemical resistance	Conditionally resistant
	Substance	Methanol
	Chemical resistance	Conditionally resistant
	Substance	Motor oil
Chemical resistance	Conditionally resistant	
Substance	Lye, diluted	
Chemical resistance	Resistant	
Substance	Hydrochlorofluorocarbons	
Chemical resistance	Conditionally resistant	
Substance	Outdoor use	
Chemical resistance	Conditionally resistant	

Dimensions

Width	34 mm	Height of socket	36 mm
-------	-------	------------------	-------

HDC HEE 18 MP

Weidmüller Interface GmbH & Co. KG

Klingenbergstraße 26

D-32758 Detmold

Germany

www.weidmueller.com

Technical data

General data

Number of poles	18	Plugging cycles, silver	≥ 500
Plugging cycles, gold	≥ 500	Type of connection	PUSH IN with actuator
Installation size	4	UL 94 flammability rating	V-0
Volume resistance	≤2 mΩ	Colour	beige
Insulation resistance	1010 Ω	Insulating material	PC glass-fibre reinforced (UL-listed and railway-certified)
Insulating material group	IIIa	Conductor cross-section	2.5 mm ²
Tightening torque, max. PE connection	1.2 Nm	Type	Male
Surge voltage category	III	Pollution severity	3
Tightening torque, min. PE connection	0.8 Nm	Basic material	Copper alloy
Series	HEE	Rated voltage (DIN EN 61984)	500 V
Rated voltage according to UL/CSA	600 V AC/DC	Rated impulse voltage (DIN EN 61984)	6 kV
Rated current (DIN EN 61984)	16 A	Rated voltage conductor-PE (III/3)	500 V
Free from halogens	true	Low smoke acc. DIN EN 45545-2	Yes
BG	4	Number of signal contacts	0
Number of power contacts	18		

Connection data PE

Connection type PE	Screw connection	Blade size, slotted (PE connection)	SD 0.8 x 4.0
Stripping length PE connection	10 mm	Tightening torque, max. PE connection	1.2 Nm
Tightening torque, min. PE connection	0.8 Nm	Fixing screw	M 4
Rated cross-section	2.5 mm ²	Wire cross section, AWG (PE), min.	AWG 20
Wire cross section, AWG (PE), max.	AWG 12		

Power contact

Rated current (DIN EN 61984), power contact 16 A

Version

Type of connection	PUSH IN with actuator	Installation size	4
Volume resistance	≤2 mΩ	Conductor cross-section, max.	2.5 mm ²
Conductor cross-section, min.	0.5 mm ²	Basic material	Copper alloy
BG	4		

Classifications

ETIM 8.0	EC000438	ETIM 9.0	EC000438
ETIM 10.0	EC000438	ECLASS 14.0	27-44-02-05
ECLASS 15.0	27-44-02-05		

Drawings

