

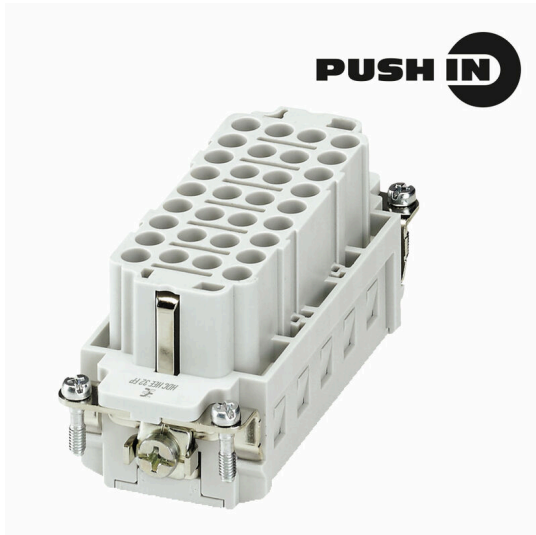
HDC HEE 32 FP**Weidmüller Interface GmbH & Co. KG**

Klingenbergstraße 26

D-32758 Detmold

Germany

www.weidmueller.com



The HEE series features high-density contacts and is designed based on the established HE inserts. The wire connection level is designed as a PUSH IN contact.

Number of poles: 10 - 64

Rated current: 16 A

Rated voltage: 500 V

General ordering data

Version	HDC insert, Female, 500 V, 16 A, Number of poles: 32, PUSH IN with actuator, Installation size: 6
Order No.	3023910000
Type	HDC HEE 32 FP
GTIN (EAN)	409998694649 1
Qty.	1 items

Technical data

Approvals

Approvals



ROHS	Conform
UL File Number Search	UL Website
Certificate No. (cURus)	E310075

Dimensions and weights

Depth	84.5 mm	Depth (inches)	3.3268 inch
Height	33.2 mm	Height (inches)	1.3071 inch
Width	34 mm	Width (inches)	1.3386 inch
Length	84.5 mm	Length (inches)	3.3268 inch
Net weight	100 g		

Temperatures

Limit temperature	-40 °C ... 125 °C
-------------------	-------------------

Environmental Product Compliance

RoHS Compliance Status	Compliant without exemption	
REACH SVHC	No SVHC above 0.1 wt%	
Chemical resistance	Substance	Acetone
	Chemical resistance	Resistant
	Substance	Ammonia, watery
	Chemical resistance	Conditionally resistant
	Substance	Petrol
	Chemical resistance	Resistant
	Substance	Benzene
	Chemical resistance	Resistant
	Substance	Diesel oil
	Chemical resistance	Conditionally resistant
	Substance	Acetic acid, concentrated
	Chemical resistance	Resistant
	Substance	Potassium hydroxide
	Chemical resistance	Conditionally resistant
	Substance	Methanol
	Chemical resistance	Conditionally resistant
	Substance	Motor oil
	Chemical resistance	Conditionally resistant
Substance	Lye, diluted	
Chemical resistance	Resistant	
Substance	Hydrochlorofluorocarbons	
Chemical resistance	Conditionally resistant	
Substance	Outdoor use	
Chemical resistance	Conditionally resistant	

Dimensions

Width	34 mm
-------	-------

HDC HEE 32 FP

Weidmüller Interface GmbH & Co. KG

Klingenbergstraße 26

D-32758 Detmold

Germany

www.weidmueller.com

Technical data

General data

Number of poles	32	Plugging cycles, silver	≥ 500
Plugging cycles, gold	≥ 500	Type of connection	PUSH IN with actuator
Installation size	6	UL 94 flammability rating	V-0
Volume resistance	≤2 mΩ	Colour	beige
Insulation resistance	1010 Ω	Insulating material	PC glass-fibre reinforced (UL-listed and railway-certified)
Insulating material group	IIIa	Conductor cross-section	2.5 mm ²
Tightening torque, max. PE connection	1.2 Nm	Type	Female
Surge voltage category	III	Pollution severity	3
Tightening torque, min. PE connection	0.8 Nm	Basic material	Copper alloy
Series	HEE	Rated voltage (DIN EN 61984)	500 V
Rated voltage according to UL/CSA	600 V AC/DC	Rated impulse voltage (DIN EN 61984)	6 kV
Rated current (DIN EN 61984)	16 A	Rated voltage conductor-PE (III/3)	500 V
Free from halogens	true	Low smoke acc. DIN EN 45545-2	Yes
BG	6	Number of signal contacts	0
Number of power contacts	32		

Connection data PE

Connection type PE	Screw connection	Blade size, slotted (PE connection)	SD 0.8 x 4.0
Stripping length PE connection	10 mm	Tightening torque, max. PE connection	1.2 Nm
Tightening torque, min. PE connection	0.8 Nm	Fixing screw	M 4
Rated cross-section	2.5 mm ²		

Power contact

Rated current (DIN EN 61984), power contact	16 A
---	------

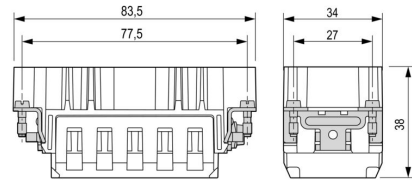
Version

Wire connection cross section AWG, max.	AWG 12	Type of connection	PUSH IN with actuator
Installation size	6	Volume resistance	≤2 mΩ
Wire connection cross section AWG, min.	AWG 20	Wire cross-section, solid, max.	2.5 mm ²
Wire cross-section, solid, min.	0.5 mm ²	Conductor cross-section, max.	2.5 mm ²
Conductor cross-section, min.	0.5 mm ²	Basic material	Copper alloy
BG	6		

Classifications

ETIM 8.0	EC000438	ETIM 9.0	EC000438
ETIM 10.0	EC000438	ECLASS 14.0	27-44-02-05
ECLASS 15.0	27-44-02-05		

Drawings



Accessories

Slotted screwdriver



VDE insulated slot-head screwdriver, SDI DIN 7437, ISO 2380/2, drive output acc. to DIN 5264, ISO 2380/1. SoftFinish grip

General ordering data

Type	SDIS 0.4X2.5X75	Version
Order No.	9008370000	Screwdriver, Screwdriver
GTIN (EAN)	4032248056330	
Qty.	1 ST	
Type	SDS 0.4X2.5X75	Version
Order No.	9009030000	Screwdriver, Screwdriver
GTIN (EAN)	4032248266944	
Qty.	1 ST	
Type	SDIS 0.6X3.5X100	Version
Order No.	9008390000	Screwdriver, Screwdriver
GTIN (EAN)	4032248056354	
Qty.	1 ST	
Type	SDS 0.6X3.5X100	Version
Order No.	9008330000	Screwdriver, Screwdriver
GTIN (EAN)	4032248056286	
Qty.	1 ST	
Type	SDIS 0.8X4.0X100	Version
Order No.	9008400000	Screwdriver, Screwdriver
GTIN (EAN)	4032248056361	
Qty.	1 ST	
Type	SDS 0.8X4.0X100	Version
Order No.	9008340000	Screwdriver, Screwdriver
GTIN (EAN)	4032248056293	
Qty.	1 ST	

Crosshead screwdriver Phillips



VDE insulated crosshead screwdriver, for Phillips screws, SDIK PH DIN 7438, ISO 8764/2-PH, output to ISO 8764-PH, SoftFinish grip

HDC HEE 32 FP

Weidmüller Interface GmbH & Co. KG
 Klingenbergstraße 26
 D-32758 Detmold
 Germany

www.weidmueller.com

Accessories

General ordering data

Type	SDIK PH1	Version
Order No.	9008570000	Screwdriver, Screwdriver
GTIN (EAN)	4032248056569	
Qty.	1 ST	
Type	SDK PH1	Version
Order No.	9008480000	Screwdriver, Screwdriver
GTIN (EAN)	4032248056477	
Qty.	1 ST	

DSTV



Various accessories are available for our inserts. This includes coding elements for the inserts.

General ordering data

Type	DSTV COBU5	Version
Order No.	1471500000	Heavy-duty connectors, Accessories, Coding element
GTIN (EAN)	4008190178543	
Qty.	100 ST	
Type	DSTV COST4	Version
Order No.	1471300000	Heavy-duty connectors, Accessories, Coding System
GTIN (EAN)	4008190017354	
Qty.	100 ST	

Size 6



The HEE series features high-density contacts and is designed based on the established HE inserts. The wire connection level is designed as a PUSH IN contact.
 Number of poles: 10 - 64
 Rated current: 16 A
 Rated voltage: 500 V

General ordering data

Type	HDC HEE 32 MP	Version
Order No.	3023950000	HDC insert, Male, 500 V, 16 A, Number of poles: 32, PUSH IN with actuator, Installation size: 6
GTIN (EAN)	4099986946538	
Qty.	1 ST	