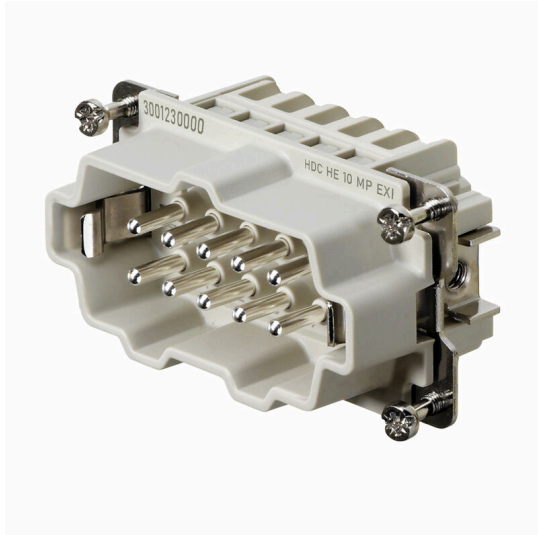


HDC HE 10 MP EXI**Weidmüller Interface GmbH & Co. KG**

Klingenbergstraße 26

D-32758 Detmold

Germany

www.weidmueller.com

The ability to disconnect cables in the EXI area simplifies installation and service and enables better preparation. The Rockstar® EXI inserts shown here are equipped with PUSH IN connections and are therefore very easy to connect.

They are identified by the article designation

General ordering data

Version	, Male, 500 V, 5 A, Number of poles: 10, PUSH IN, Installation size: 4
Order No.	3001230000
Type	HDC HE 10 MP EXI
GTIN (EAN)	4099986902336
Qty.	1 items

HDC HE 10 MP EXI

Weidmüller Interface GmbH & Co. KG

Klingenbergstraße 26

D-32758 Detmold

Germany

www.weidmueller.com

Technical data

Approvals

ROHS	Conform
------	---------

Dimensions and weights

Depth	64 mm	Depth (inches)	2.5197 inch
Height	34.3 mm	Height (inches)	1.3504 inch
Width	34 mm	Width (inches)	1.3386 inch
Net weight	56 g		

Temperatures

Limit temperature	-40 °C ... 125 °C
-------------------	-------------------

Environmental Product Compliance

RoHS Compliance Status	Compliant with exemption
RoHS Exemption (if applicable/known)	6c
REACH SVHC	Lead 7439-92-1, Potassium perfluorobutane sulfonate 29420-49-3
SCIP	b67daa31-7dca-434d-8290-da7fb52f83a2

Dimensions

Width	34 mm	Total length base	64 mm
Height of socket	33.8 mm		

General data

Number of poles	10	Plugging cycles, silver	≥ 500
Type of connection	PUSH IN	Installation size	4
UL 94 flammability rating	V-0	Volume resistance	≤2 mΩ
Colour	beige	Insulation resistance	1010 Ω
Insulating material	PC glass-fibre reinforced (UL-listed and railway-certified)	Insulating material group	IIIa
Tightening torque, max. PE connection	1.5 Nm	Surface finish	Silver passivated
Type	Male	Pollution severity	3
Tightening torque, min. PE connection	1.2 Nm	Basic material	Copper alloy
Series	HE	Rated voltage (DIN EN 61984)	500 V
Rated current (DIN EN 61984)	5 A	Free from halogens	true
Low smoke acc. DIN EN 45545-2	Yes	BG	4
Explosion protection type	II 2G Ex ib IIC T6 Gb		

Connection data PE

Connection type PE	Screw connection	Blade size, slotted (PE connection)	SD 0.8 x 4.0
Stripping length PE connection	10 mm	Tightening torque, max. PE connection	1.5 Nm
Tightening torque, min. PE connection	1.2 Nm	Fixing screw	M 4
Rated cross-section	4 mm ²	Wire cross section, AWG (PE), min.	AWG 20
Wire cross section, AWG (PE), max.	AWG 12		

Version

Blade size, slotted (screw connection)	SD 0.5 x 3.0	Stripping length, rated connection	10 mm
Type of connection	PUSH IN	Installation size	4

HDC HE 10 MP EXI

Weidmüller Interface GmbH & Co. KG
 Klingenbergstraße 26
 D-32758 Detmold
 Germany

www.weidmueller.com

Technical data

Volume resistance	≤2 mΩ	Wire cross-section, solid, max.	2.5 mm ²
Wire cross-section, solid, min.	0.5 mm ²	Wire connection cross-section, finely stranded with wire-end ferrules DIN 46228/4, max.	1.5 mm ²
Wire connection cross-section, finely stranded with wire-end ferrules DIN 46228/1, max.	2.5 mm ²	Wire connection cross-section, finely stranded with wire-end ferrules DIN 46228/1, min.	0.5 mm ²
Wire connection cross section, finely stranded, max.	2.5 mm ²	Wire connection cross section, finely stranded, min.	0.5 mm ²
Conductor cross-section, max.	2.5 mm ²	Conductor cross-section, min.	0.5 mm ²
Surface finish	Silver passivated	Basic material	Copper alloy
BG	4		

Classifications

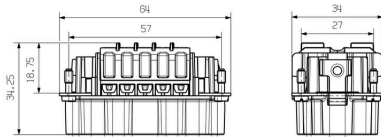
ETIM 8.0	EC000438	ETIM 9.0	EC000438
ETIM 10.0	EC000438	ECLASS 14.0	27-44-02-05
ECLASS 15.0	27-44-02-05		

HDC HE 10 MP EXI

Weidmüller Interface GmbH & Co. KG
Klingenbergstraße 26
D-32758 Detmold
Germany

Drawings

www.weidmueller.com



HDC HE 10 MP EXI

Weidmüller Interface GmbH & Co. KG
 Klingenbergstraße 26
 D-32758 Detmold
 Germany

www.weidmueller.com

Accessories

Size 4



The option of disconnecting cables in the EXI area simplifies installation and servicing and enables better preparation.

The Rockstar® EXI enclosures shown here are identified for use by their article designation.

A blue color is therefore not required. A blue EXI gland is required to complete the enclosure.

General ordering data

Type	HDC 10B ABU EXI	Version
Order No.	3001310000	HDC enclosures, Installation size: 4, Protection degree: IP65, in plugged condition, Bulkhead housing, Side-locking clamp on lower side, Side-locking clamp not replaceable, Standard, Size of cable entries: none
GTIN (EAN)	4099986902398	
Qty.	1 ST	
Type	HDC 10B TOBU 1M25G EXI	Version
Order No.	3001390000	HDC enclosures, Installation size: 4, Protection degree: IP65, in plugged condition, Cable entry from side, Plug housing, Side-locking clamp on lower side, Standard, Size of cable entries: M 25
GTIN (EAN)	4099986902459	
Qty.	1 ST	
Type	HDC 10B TSBU 1M25G EXI	Version
Order No.	3001370000	HDC enclosures, Installation size: 4, Protection degree: IP65, in plugged condition, Cable entry from side, Plug housing, Side-locking clamp on lower side, Standard, Size of cable entries: M 25
GTIN (EAN)	4099986902442	
Qty.	1 ST	

Chloroprene seal material, -40°C - +70°C



Polyamide cable glands, which are suitable for usage in explosion risk zones Ex e (increased safety) and Ex i (intrinsic safety).

Weidmüller offers a product family without restrictions and besides compliance with standards, the cable gland excels thanks to its increased impact resistance of 4/7 Joule and a possible temperature range down to -60°C without restrictions. They have been tested to the current standard and EN 60079-0 directive, they are ATEX and IECEx certified.

General ordering data

Type	VG M25 EXI 12-17 CR7J G4	Version
Order No.	2722270000	VG Exi 7J (Ex plastic cable gland 7J Exi), Cable glands, straight, M 25, 10 mm, OD min. 12 - OD max. 17 mm, IP54, IP66, IP67, IP68 - 5 bar (30 min.), Polyamide 6
GTIN (EAN)	4050118821505	
Qty.	50 ST	