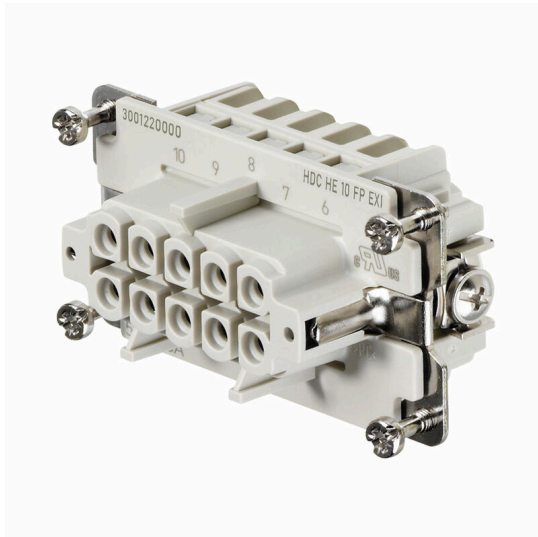


HDC HE 10 FP EXI**Weidmüller Interface GmbH & Co. KG**

Klingenbergstraße 26

D-32758 Detmold

Germany

www.weidmueller.com

The ability to disconnect cables in the EXI area simplifies installation and service and enables better preparation. The Rockstar® EXI inserts shown here are equipped with PUSH IN connections and are therefore very easy to connect.

They are identified by the article designation

General ordering data

| | |
|------------|--|
| Version | , Female, 500 V, 5 A, Number of poles: 10, PUSH IN, Installation size: 4 |
| Order No. | 3001220000 |
| Type | HDC HE 10 FP EXI |
| GTIN (EAN) | 4099986902329 |
| Qty. | 1 items |

HDC HE 10 FP EXI

Weidmüller Interface GmbH & Co. KG

Klingenbergstraße 26

D-32758 Detmold

Germany

www.weidmueller.com

Technical data

Approvals

| | |
|------|---------|
| ROHS | Conform |
|------|---------|

Dimensions and weights

| | | | |
|------------|---------|-----------------|-------------|
| Depth | 64 mm | Depth (inches) | 2.5197 inch |
| Height | 33.8 mm | Height (inches) | 1.3307 inch |
| Width | 34 mm | Width (inches) | 1.3386 inch |
| Net weight | 58 g | | |

Temperatures

| | |
|-------------------|-------------------|
| Limit temperature | -40 °C ... 125 °C |
|-------------------|-------------------|

Environmental Product Compliance

| | |
|--------------------------------------|--|
| RoHS Compliance Status | Compliant with exemption |
| RoHS Exemption (if applicable/known) | 6c |
| REACH SVHC | Lead 7439-92-1, Potassium perfluorobutane sulfonate 29420-49-3 |
| SCIP | b67daa31-7dca-434d-8290-da7fb52f83a2 |

Dimensions

| | | | |
|------------------|---------|-------------------|-------|
| Width | 34 mm | Total length base | 64 mm |
| Height of socket | 33.8 mm | | |

General data

| | | | |
|---------------------------------------|---|------------------------------|-------------------|
| Number of poles | 10 | Plugging cycles, silver | ≥ 500 |
| Type of connection | PUSH IN | Installation size | 4 |
| UL 94 flammability rating | V-0 | Volume resistance | ≤2 mΩ |
| Colour | beige | Insulation resistance | 1010 Ω |
| Insulating material | PC glass-fibre reinforced (UL-listed and railway-certified) | Insulating material group | IIIa |
| Tightening torque, max. PE connection | 1.5 Nm | Surface finish | Silver passivated |
| Type | Female | Pollution severity | 3 |
| Tightening torque, min. PE connection | 1.2 Nm | Basic material | Copper alloy |
| Series | HE | Rated voltage (DIN EN 61984) | 500 V |
| Rated current (DIN EN 61984) | 5 A | Free from halogens | true |
| Low smoke acc. DIN EN 45545-2 | Yes | BG | 4 |
| Explosion protection type | II 2G Ex ib IIC T6 Gb | | |

Connection data PE

| | | | |
|---------------------------------------|-------------------|---------------------------------------|--------------|
| Connection type PE | Screw connection | Blade size, slotted (PE connection) | SD 0.8 x 4.0 |
| Stripping length PE connection | 10 mm | Tightening torque, max. PE connection | 1.5 Nm |
| Tightening torque, min. PE connection | 1.2 Nm | Fixing screw | M 4 |
| Rated cross-section | 4 mm ² | Wire cross section, AWG (PE), min. | AWG 20 |
| Wire cross section, AWG (PE), max. | AWG 12 | | |

Version

| | | | |
|--|--------------|------------------------------------|-------|
| Blade size, slotted (screw connection) | SD 0.5 x 3.0 | Stripping length, rated connection | 10 mm |
| Type of connection | PUSH IN | Installation size | 4 |

HDC HE 10 FP EXI

Weidmüller Interface GmbH & Co. KG
 Klingenbergstraße 26
 D-32758 Detmold
 Germany

www.weidmueller.com

Technical data

| | | | |
|---|---------------------|---|---------------------|
| Volume resistance | ≤2 mΩ | Wire cross-section, solid, max. | 2.5 mm ² |
| Wire cross-section, solid, min. | 0.5 mm ² | Wire connection cross-section, finely stranded with wire-end ferrules DIN 46228/4, max. | 1.5 mm ² |
| Wire connection cross-section, finely stranded with wire-end ferrules DIN 46228/1, max. | 2.5 mm ² | Wire connection cross-section, finely stranded with wire-end ferrules DIN 46228/1, min. | 0.5 mm ² |
| Wire connection cross section, finely stranded, max. | 2.5 mm ² | Wire connection cross section, finely stranded, min. | 0.5 mm ² |
| Conductor cross-section, max. | 2.5 mm ² | Conductor cross-section, min. | 0.5 mm ² |
| Surface finish | Silver passivated | Basic material | Copper alloy |
| BG | 4 | | |

Classifications

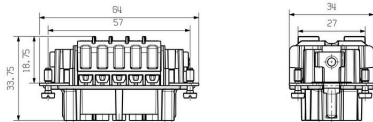
| | | | |
|-------------|-------------|-------------|-------------|
| ETIM 8.0 | EC000438 | ETIM 9.0 | EC000438 |
| ETIM 10.0 | EC000438 | ECLASS 14.0 | 27-44-02-05 |
| ECLASS 15.0 | 27-44-02-05 | | |

HDC HE 10 FP EXI

Weidmüller Interface GmbH & Co. KG
Klingenbergstraße 26
D-32758 Detmold
Germany

Drawings

www.weidmueller.com



HDC HE 10 FP EXI

Weidmüller Interface GmbH & Co. KG
 Klingenbergstraße 26
 D-32758 Detmold
 Germany

Accessories

www.weidmueller.com

Size 4



The option of disconnecting cables in the EXI area simplifies installation and servicing and enables better preparation.
 The Rockstar® EXI enclosures shown here are identified for use by their article designation.
 A blue color is therefore not required. A blue EXI gland is required to complete the enclosure.

General ordering data

| | | |
|------------|----------------------------|--|
| Type | HDC 10B ABU EXI | Version |
| Order No. | 3001310000 | HDC enclosures, Installation size: 4, Protection degree: IP65, in plugged condition, Bulkhead housing, Side-locking clamp on lower side, Side-locking clamp not replaceable, Standard, Size of cable entries: none |
| GTIN (EAN) | 4099986902398 | |
| Qty. | 1 ST | |
| Type | HDC 10B TOBU 1M25G EXI | Version |
| Order No. | 3001390000 | HDC enclosures, Installation size: 4, Protection degree: IP65, in plugged condition, Cable entry from side, Plug housing, Side-locking clamp on lower side, Standard, Size of cable entries: M 25 |
| GTIN (EAN) | 4099986902459 | |
| Qty. | 1 ST | |
| Type | HDC 10B TSBU 1M25G EXI | Version |
| Order No. | 3001370000 | HDC enclosures, Installation size: 4, Protection degree: IP65, in plugged condition, Cable entry from side, Plug housing, Side-locking clamp on lower side, Standard, Size of cable entries: M 25 |
| GTIN (EAN) | 4099986902442 | |
| Qty. | 1 ST | |

Chloroprene seal material, -40°C - +70°C



Polyamide cable glands, which are suitable for usage in explosion risk zones Ex e (increased safety) and Ex i (intrinsic safety).
 Weidmüller offers a product family without restrictions and besides compliance with standards, the cable gland excels thanks to its increased impact resistance of 4/7 Joule and a possible temperature range down to -60°C without restrictions. They have been tested to the current standard and EN 60079-0 directive, they are ATEX and IECEx certified.

General ordering data

| | | |
|------------|----------------------------|---|
| Type | VG M25 EXI 12-17 CR7J G4 | Version |
| Order No. | 2722270000 | VG Exi 7J (Ex plastic cable gland 7J Exi), Cable glands, straight, M 25, 10 mm, OD min. 12 - OD max. 17 mm, IP54, IP66, IP67, IP68 - 5 bar (30 min.), Polyamide 6 |
| GTIN (EAN) | 4050118821505 | |
| Qty. | 50 ST | |