

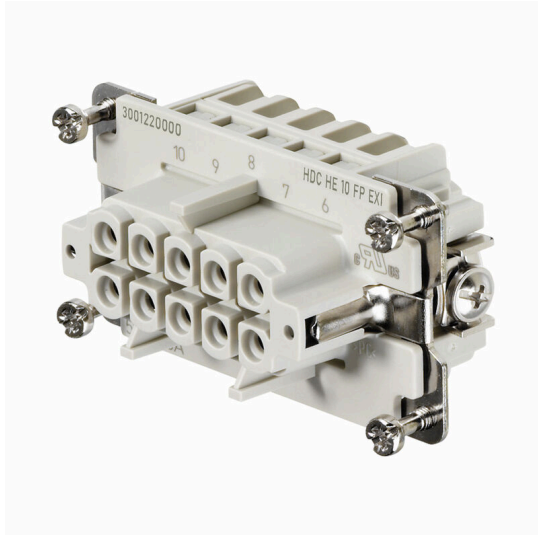
HDC HE 10 FP EXI**Weidmüller Interface GmbH & Co. KG**

Klingenbergstraße 26

D-32758 Detmold

Germany

www.weidmueller.com



The ability to disconnect cables in the EXI area simplifies installation and service and enables better preparation. The Rockstar® EXI inserts shown here are equipped with PUSH IN connections and are therefore very easy to connect.

They are identified by the article designation

General ordering data

Version	HDC insert, Female, 500 V, 5 A, Number of poles: 10, PUSH IN, Installation size: 4
Order No.	3001220000
Type	HDC HE 10 FP EXI
GTIN (EAN)	4099986902329
Qty.	1 items

HDC HE 10 FP EXI

Weidmüller Interface GmbH & Co. KG
Klingenbergstraße 26
D-32758 Detmold
Germany

www.weidmueller.com

Technical data

Approvals

ROHS	Conform
------	---------

Dimensions and weights

Depth	64 mm	Depth (inches)	2.5197 inch
Height	33.8 mm	Height (inches)	1.3307 inch
Width	34 mm	Width (inches)	1.3386 inch
Net weight	58 g		

Temperatures

Limit temperature	-40 °C ... 125 °C
-------------------	-------------------

Environmental Product Compliance

RoHS Compliance Status	Compliant without exemption
REACH SVHC	Potassium perfluorobutane sulfonate 29420-49-3
SCIP	b67daa31-7dca-434d-8290-da7fb52f83a2

Dimensions

Width	34 mm	Total length base	64 mm
Height of socket	33.8 mm		

General data

Number of poles	10	Plugging cycles, silver	≥ 500
Type of connection	PUSH IN	Installation size	4
UL 94 flammability rating	V-0	Volume resistance	≤2 mΩ
Colour	beige	Insulation resistance	1010 Ω
Insulating material	PC glass-fibre reinforced (UL-listed and railway-certified)	Insulating material group	IIIa
Tightening torque, max. PE connection	1.5 Nm	Surface finish	Silver passivated
Type	Female	Pollution severity	3
Tightening torque, min. PE connection	1.2 Nm	Basic material	Copper alloy
Series	HE	Rated voltage (DIN EN 61984)	500 V
Rated current (DIN EN 61984)	5 A	Free from halogens	true
Low smoke acc. DIN EN 45545-2	Yes	BG	4
Explosion protection type	II 2G Ex ib IIC T6 Gb		

Connection data PE

Connection type PE	Screw connection	Blade size, slotted (PE connection)	SD 0.8 x 4.0
Stripping length PE connection	10 mm	Tightening torque, max. PE connection	1.5 Nm
Tightening torque, min. PE connection	1.2 Nm	Fixing screw	M 4
Rated cross-section	4 mm ²	Wire cross section, AWG (PE), min.	AWG 20
Wire cross section, AWG (PE), max.	AWG 12		

Version

Blade size, slotted (screw connection)	SD 0.5 x 3.0	Stripping length, rated connection	10 mm
Type of connection	PUSH IN	Installation size	4

HDC HE 10 FP EXI

Weidmüller Interface GmbH & Co. KG
 Klingenbergstraße 26
 D-32758 Detmold
 Germany

www.weidmueller.com

Technical data

Volume resistance	≤2 mΩ	Wire cross-section, solid, max.	2.5 mm ²
Wire cross-section, solid, min.	0.5 mm ²	Wire connection cross-section, finely stranded with wire-end ferrules DIN 46228/4, max.	1.5 mm ²
Wire connection cross-section, finely stranded with wire-end ferrules DIN 46228/1, max.	2.5 mm ²	Wire connection cross-section, finely stranded with wire-end ferrules DIN 46228/1, min.	0.5 mm ²
Wire connection cross section, finely stranded, max.	2.5 mm ²	Wire connection cross section, finely stranded, min.	0.5 mm ²
Conductor cross-section, max.	2.5 mm ²	Conductor cross-section, min.	0.5 mm ²
Surface finish	Silver passivated	Basic material	Copper alloy
BG	4		

Classifications

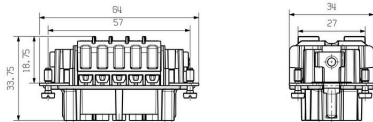
ETIM 8.0	EC000438	ETIM 9.0	EC000438
ETIM 10.0	EC000438	ECLASS 14.0	27-44-02-05
ECLASS 15.0	27-44-02-05		

HDC HE 10 FP EXI

Weidmüller Interface GmbH & Co. KG
Klingenbergstraße 26
D-32758 Detmold
Germany

Drawings

www.weidmueller.com



HDC HE 10 FP EXI

Weidmüller Interface GmbH & Co. KG

Klingenbergstraße 26

D-32758 Detmold

Germany

Accessories

www.weidmueller.com

Size 4



The option of disconnecting cables in the EXI area simplifies installation and servicing and enables better preparation.

The Rockstar® EXI enclosures shown here are identified for use by their article designation.

A blue color is therefore not required. A blue EXI gland is required to complete the enclosure.

General ordering data

Type	HDC 10B ABU EXI	Version
Order No.	3001310000	HDC enclosures, Installation size: 4, Protection degree: IP65, in
GTIN (EAN)	4099986902398	plugged condition, Bulkhead housing, Side-locking clamp on lower
Qty.	1 ST	side, Side-locking clamp not replaceable, Standard, Size of cable
		entries: none
Type	HDC 10B TOBU 1M25G EXI	Version
Order No.	3001390000	HDC enclosures, Installation size: 4, Protection degree: IP65, in
GTIN (EAN)	4099986902459	plugged condition, Cable entry from side, Plug housing, Side-locking
Qty.	1 ST	clamp on lower side, Standard, Size of cable entries: M 25
Type	HDC 10B TSBU 1M25G EXI	Version
Order No.	3001370000	HDC enclosures, Installation size: 4, Protection degree: IP65, in
GTIN (EAN)	4099986902442	plugged condition, Cable entry from side, Plug housing, Side-locking
Qty.	1 ST	clamp on lower side, Standard, Size of cable entries: M 25

Chloroprene seal material, -40°C - +70°C



Polyamide cable glands, which are suitable for usage in explosion risk zones Ex e (increased safety) and Ex i (intrinsic safety).

Weidmüller offers a product family without restrictions and besides compliance with standards, the cable gland excels thanks to its increased impact resistance of 4/7 Joule and a possible temperature range down to -60°C without restrictions. They have been tested to the current standard and EN 60079-0 directive, they are ATEX and IECEx certified.

General ordering data

Type	VG M25 EXI 12-17 CR7J G4	Version
Order No.	2722270000	VG Exi 7J (Ex plastic cable gland 7J Exi), Cable glands, straight, M 25,
GTIN (EAN)	4050118821505	10 mm, OD min. 12 - OD max. 17 mm, IP54, IP66, IP67, IP68 - 5 bar
Qty.	50 ST	(30 min.), Polyamide 6