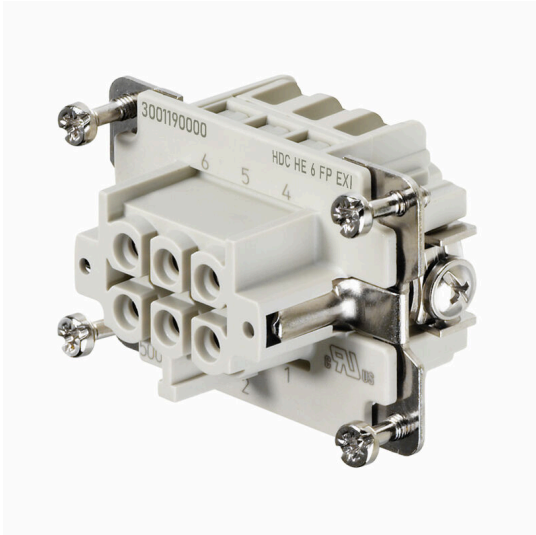


**HDC HE 6 FP EXI****Weidmüller Interface GmbH & Co. KG**

Klingenbergstraße 26

D-32758 Detmold

Germany

[www.weidmueller.com](http://www.weidmueller.com)

The ability to disconnect cables in the EXI area simplifies installation and service and enables better preparation. The Rockstar® EXI inserts shown here are equipped with PUSH IN connections and are therefore very easy to connect.

They are identified by the article designation

**General ordering data**

Version	, Female, 500 V, 5 A, Number of poles: 6, PUSH IN, Installation size: 3
Order No.	<a href="#">3001190000</a>
Type	HDC HE 6 FP EXI
GTIN (EAN)	4099986902305
Qty.	1 items

## HDC HE 6 FP EXI

Weidmüller Interface GmbH &amp; Co. KG

Klingenbergstraße 26

D-32758 Detmold

Germany

www.weidmueller.com

## Technical data

## Approvals

ROHS	Conform
------	---------

## Dimensions and weights

Depth	51 mm	Depth (inches)	2.0079 inch
Height	33.8 mm	Height (inches)	1.3307 inch
Width	34 mm	Width (inches)	1.3386 inch
Net weight	38.72 g		

## Temperatures

Limit temperature	-40 °C ... 125 °C
-------------------	-------------------

## Environmental Product Compliance

RoHS Compliance Status	Compliant with exemption
RoHS Exemption (if applicable/known)	6c
REACH SVHC	Lead 7439-92-1, Potassium perfluorobutane sulfonate 29420-49-3
SCIP	b67daa31-7dca-434d-8290-da7fb52f83a2

## Dimensions

Width	34 mm	Total length base	51 mm
Height of socket	33.8 mm		

## General data

Number of poles	6	Plugging cycles, silver	≥ 500
Type of connection	PUSH IN	Installation size	3
UL 94 flammability rating	V-0	Volume resistance	≤2 mΩ
Colour	beige	Insulation resistance	1010 Ω
Insulating material	PC glass-fibre reinforced (UL-listed and railway-certified)	Insulating material group	IIIa
Tightening torque, max. PE connection	1.5 Nm	Surface finish	Silver passivated
Type	Female	Pollution severity	3
Tightening torque, min. PE connection	1.2 Nm	Basic material	Copper alloy
Series	HE	Rated voltage (DIN EN 61984)	500 V
Rated current (DIN EN 61984)	5 A	Free from halogens	true
Low smoke acc. DIN EN 45545-2	Yes	BG	3
Explosion protection type	II 2G Ex ib IIC T6 Gb		

## Connection data PE

Connection type PE	Screw connection	Blade size, slotted (PE connection)	SD 0.8 x 4.0
Stripping length PE connection	10 mm	Tightening torque, max. PE connection	1.5 Nm
Tightening torque, min. PE connection	1.2 Nm	Fixing screw	M 4
Rated cross-section	4 mm <sup>2</sup>	Wire cross section, AWG (PE), min.	AWG 20
Wire cross section, AWG (PE), max.	AWG 12		

## Version

Blade size, slotted (screw connection)	SD 0.5 x 3.0	Stripping length, rated connection	10 mm
Type of connection	PUSH IN	Installation size	3

## HDC HE 6 FP EXI

**Weidmüller Interface GmbH & Co. KG**

Klingenbergstraße 26  
D-32758 Detmold  
Germany

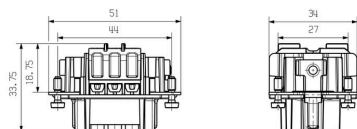
[www.weidmueller.com](http://www.weidmueller.com)

## Technical data

Volume resistance	≤2 mΩ	Wire cross-section, solid, max.	2.5 mm <sup>2</sup>
Wire cross-section, solid, min.	0.5 mm <sup>2</sup>	Wire connection cross-section, finely stranded with wire-end ferrules DIN 46228/4, max.	1.5 mm <sup>2</sup>
Wire connection cross-section, finely stranded with wire-end ferrules DIN 46228/1, max.	2.5 mm <sup>2</sup>	Wire connection cross-section, finely stranded with wire-end ferrules DIN 46228/1, min.	0.5 mm <sup>2</sup>
Wire connection cross section, finely stranded, max.	2.5 mm <sup>2</sup>	Wire connection cross section, finely stranded, min.	0.5 mm <sup>2</sup>
Conductor cross-section, max.	2.5 mm <sup>2</sup>	Conductor cross-section, min.	0.5 mm <sup>2</sup>
Surface finish	Silver passivated	Basic material	Copper alloy
BG	3		

## Classifications

ETIM 8.0	EC000438	ETIM 9.0	EC000438
ETIM 10.0	EC000438	ECLASS 14.0	27-44-02-05
ECLASS 15.0	27-44-02-05		



## HDC HE 6 FP EXI

**Weidmüller Interface GmbH & Co. KG**  
 Klingenbergstraße 26  
 D-32758 Detmold  
 Germany

www.weidmueller.com

## Accessories

## Size 3



The option of disconnecting cables in the EXI area simplifies installation and servicing and enables better preparation.

The Rockstar® EXI enclosures shown here are identified for use by their article designation.

A blue color is therefore not required. A blue EXI gland is required to complete the enclosure.

## General ordering data

Type	HDC 06B ALU EXI	Version
Order No.	<a href="#">3001300000</a>	HDC enclosures, Installation size: 3, Protection degree: IP65, in plugged condition, Bulkhead housing, End-locking clamp, lower side,
GTIN (EAN)	4099986902381	End-locking clamp not replaceable, Standard
Qty.	1 ST	
Type	HDC 06B TOLU 1M20G EXI	Version
Order No.	<a href="#">3001360000</a>	HDC enclosures, Installation size: 3, Protection degree: IP65, in plugged condition, Cable entry from side, Plug housing, Side-locking clamp on lower side, Standard, Size of cable entries: M 20
GTIN (EAN)	4099986902435	
Qty.	1 ST	
Type	HDC 06B TSLU 1M20G EXI	Version
Order No.	<a href="#">3001350000</a>	HDC enclosures, Installation size: 3, Protection degree: IP65, in plugged condition, Cable entry from side, End-locking clamp, lower side, Standard, Size of cable entries: M 20
GTIN (EAN)	4099986902428	
Qty.	1 ST	

## Chloroprene seal material, -40°C - +70°C



Polyamide cable glands, which are suitable for usage in explosion risk zones Ex e (increased safety) and Ex i (intrinsic safety).

Weidmüller offers a product family without restrictions and besides compliance with standards, the cable gland excels thanks to its increased impact resistance of 4/7 Joule and a possible temperature range down to -60°C without restrictions. They have been tested to the current standard and EN 60079-0 directive, they are ATEX and IECEx certified.

## General ordering data

Type	VG M20 EXI 7-13 CR7J G4	Version
Order No.	<a href="#">2722250000</a>	VG Exi 7J (Ex plastic cable gland 7J Exi), Cable glands, straight, M 20,
GTIN (EAN)	4050118821482	10 mm, OD min. 7 - OD max. 13 mm, IP54, IP66, IP67, IP68 - 5 bar
Qty.	50 ST	(30 min.), Polyamide 6