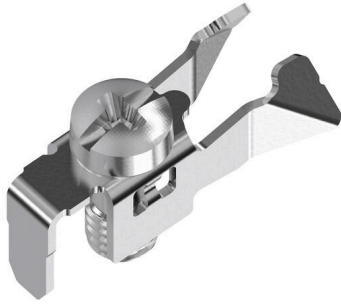


## FMC 5.2/1.5 SC

**Weidmüller Interface GmbH & Co. KG**  
Klingenbergstraße 26  
D-32758 Detmold  
Germany

[www.weidmueller.com](http://www.weidmueller.com)



### General ordering data

Version	Mounting foot for mounting rail, silver, Steel
Order No.	<a href="#">2999800000</a>
Type	FMC 5.2/1.5 SC
GTIN (EAN)	4099986900486
Qty.	50 items

**FMC 5.2/1.5 SC**

**Weidmüller Interface GmbH & Co. KG**  
Klingenbergstraße 26  
D-32758 Detmold  
Germany

[www.weidmueller.com](http://www.weidmueller.com)

**Technical data****Dimensions and weights**

Net weight	1.17 g
------------	--------

**Environmental Product Compliance**

RoHS Compliance Status	Compliant without exemption
REACH SVHC	No SVHC above 0.1 wt%

**Mounting rail**

Installation advice	Screw mounting	Basic material	Steel
---------------------	----------------	----------------	-------

**Classifications**

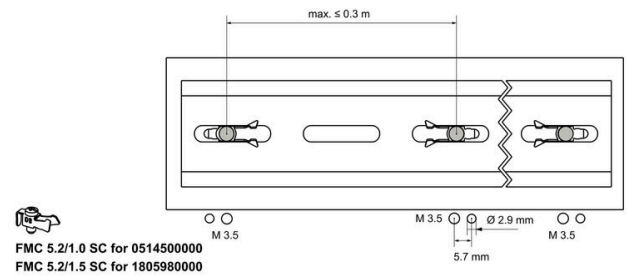
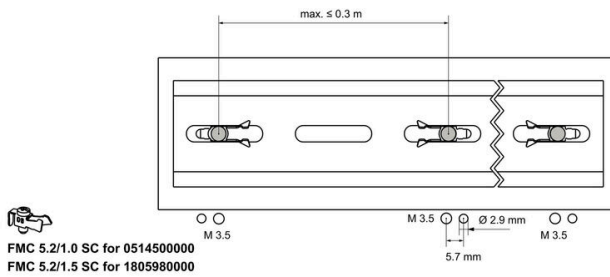
ETIM 8.0	EC002625	ETIM 9.0	EC002625
ETIM 10.0	EC002625	ECLASS 14.0	27-18-28-07
ECLASS 15.0	27-18-28-07		

FMC 5.2/1.5 SC

Weidmüller Interface GmbH & Co. KG  
Klingenbergstraße 26  
D-32758 Detmold  
Germany

Drawings

www.weidmueller.com



**Steel**

Steel DIN rails are the most widespread on the market. Among metal DIN rails, they have the lowest shortcircuit protection, similar to stainless steel.

**General ordering data**

Type	TS 35X15/6X18 2M/ST/ZN	Version	
Order No.	<a href="#">1805980000</a>	Terminal rail, Accessories, Steel, galvanic zinc plated and passivated,	
GTIN (EAN)	4032248274536	Width: 2000 mm, Height: 35 mm, Depth: 15 mm	
Qty.	20 M		