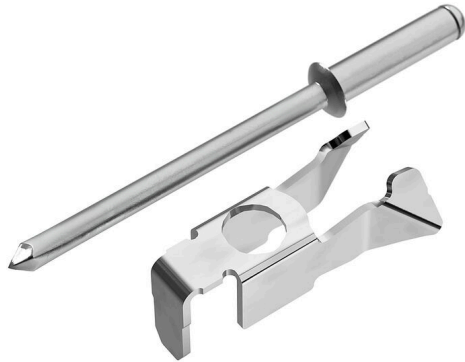


FMC 5.2/1.0 BR

Weidmüller Interface GmbH & Co. KG
Klingenbergstraße 26
D-32758 Detmold
Germany

www.weidmueller.com



General ordering data

Version	Retaining pin (terminal), Steel, silver
Order No.	2968380000
Type	FMC 5.2/1.0 BR
GTIN (EAN)	4099986780897
Qty.	50 items

Technical data

Approvals

ROHS	Conform
------	---------

Dimensions and weights

Net weight	2.16 g
------------	--------

Environmental Product Compliance

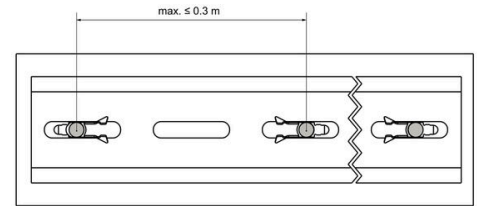
RoHS Compliance Status	Compliant without exemption
REACH SVHC	No SVHC above 0.1 wt%

Mounting rail

Installation advice	Riveted	Basic material	Steel
---------------------	---------	----------------	-------

Classifications

ETIM 8.0	EC002848	ETIM 9.0	EC002848
ETIM 10.0	EC002848	ECLASS 14.0	27-25-03-90
ECLASS 15.0	27-25-03-90		



FMC 5.2/1.0 BR
FMC 5.2/1.5 BR



Ø 3.3 mm
5.7 mm



FMC 5.2/1.0 BR

Weidmüller Interface GmbH & Co. KG
Klingenbergstraße 26
D-32758 Detmold
Germany

www.weidmueller.com

Accessories

Steel



Steel DIN rails are the most widespread on the market. Among metal DIN rails, they have the lowest shortcircuit protection, similar to stainless steel.

General ordering data

Type	TS 35X7.5/LL 1M/ST/ZN	Version	
Order No.	0514510000	Terminal rail, Accessories, Steel, galvanic zinc plated and passivated,	
GTIN (EAN)	4008190116620	Width: 1000 mm, Height: 35 mm, Depth: 7.5 mm	
Qty.	20 M		