

**KLIPPON K42 VMQ RAL7001****Weidmüller Interface GmbH & Co. KG**

Klingenbergstraße 26

D-32758 Detmold

Germany

[www.weidmueller.com](http://www.weidmueller.com)

The aluminium Klippon® K enclosures are suitable for use in an extremely wide range of different areas. Various components can be installed inside the enclosures, and will benefit in particular from the high temperature resistance, the excellent IP protection and the good impact resistance.

No matter what kind of application the customer is planning, Weidmüller is able to provide a wide range of aluminium enclosures precisely fitting the customer's requirements.

Klippon® K enclosures for hazardous areas are available on request.

Our extensive product range offers the following advantages:

- Available in two surface finishes: natural and powder-coated (RAL 7001)
  - With chloroprene moulded seal as standard (silicone moulded seal optionally available)
  - Standardised closure system with Torx slotted screw head for 19 enclosure sizes
  - Mounting holes outside of the gasket area
  - High IP protection classes: IP66, IP67 and IP68 according to DIN EN 60529
  - Impact resistance of up to 7 (10) Joules
  - The enclosures are approved according to ATEX, IECEx, cULus, and DNV GL as well as the empty enclosure standard.
- Suitable for railway applications according to EN 45545-2:2013
  - Alloy is resistant to salt water
  - Standardised distributor enclosures with threaded holes and a variety of terminal configurations

**General ordering data**

Version	Klippon K (aluminium empty enclosure), Empty enclosure, Aluminium enclosure, Height: 140 mm, Width: 140 mm, Depth: 81 mm, Basic material: Aluminium AlSi12, Powder-coated, Silver grey
Order No.	<a href="#">2934120000</a>
Type	KLIPPON K42 VMQ RAL7001
GTIN (EAN)	4099986682252
Qty.	1 items

## KLIPPON K42 VMQ RAL7001

Weidmüller Interface GmbH &amp; Co. KG

Klingenbergstraße 26

D-32758 Detmold

Germany

www.weidmueller.com

## Technical data

## Approvals

ROHS	Conform
------	---------

## Dimensions and weights

Depth	81 mm	Depth (inches)	3.189 inch
Height	140 mm	Height (inches)	5.5118 inch
Width	140 mm	Width (inches)	5.5118 inch
Mounting dimension - height	120 mm	Mounting dimension - width	120 mm
Wall thickness, min.	4 mm	Wall thickness, max.	4 mm
Net weight	1200 g		

## Temperatures

Operating temperature	-50 °C... 135 °C	Operating temperature range	-50... 135 °C
-----------------------	------------------	-----------------------------	---------------

## Environmental Product Compliance

RoHS Compliance Status	Compliant without exemption
REACH SVHC	No SVHC above 0.1 wt%

## Cable glands, right

M25	1	M16	4
M40	1	M32	1
M20	2	M12	6

## Cable glands, top/bottom

M20	3	M12	6
M40	1	M32	1
M25	3	M16	4

## Certificate numbers enclosure

Declaration of Conformity No. (DoC LVD)	DE PS24 10 1604 12 001ISS03	Approval conditions	cULus
---	-----------------------------	---------------------	-------

## General information

Material thickness of cover	4 mm	Material thickness of enclosure	4 mm
Material thickness	4 mm	Silicone	Yes
Operating temperature, max.	135 °C	Operating temperature, min.	-50 °C
Lid attachment	M6 torx stainless steel screws with slot	Installation advice	Wall mounting
Standards	DIN EN 45545-2	Surface finish	Powder-coated
Impact resistance	10 J version standard	Protection degree	IP66, IP67, IP68
Basic material	Aluminium AlSi12	Seal material	Silicone
Torque for lid screws	2.5 Nm	Integral fixing	Threaded holes M5
Enclosure attachment	Holes 6 mm	Seal material of cover	Silicone
Protection class (UL)	Type 4, Type 4X	Number of lid screws	4
Access opening: width	132 mm	Lid	Yes
Access opening: height	132 mm	Areas of use	Process industry, Transportation, Marine engineering, Packaging industry, Harbour facilities, Machine construction

**KLIPPON K42 VMQ RAL7001****Weidmüller Interface GmbH & Co. KG**

Klingenbergstraße 26  
D-32758 Detmold  
Germany

[www.weidmueller.com](http://www.weidmueller.com)
**Technical data****horizontal assembly**

WDU 10 / ZDU 10	1x10	WDU 16 / ZDU 16	1x8
WDU 2,5 / ZDU 2,5 / IDU 2,5	1x19	WDU 35 / ZDU 35	1x6
WDU 4 / ZDU 4	1x16	WDU 6 / ZDU 6	1x12

**Classifications**

ETIM 6.0	EC000261	ETIM 7.0	EC000261
ETIM 8.0	EC000261	ETIM 9.0	EC000261
ETIM 10.0	EC000261	ECLASS 9.0	27-18-01-01
ECLASS 9.1	27-18-92-90	ECLASS 10.0	27-18-01-01
ECLASS 11.0	27-18-01-01	ECLASS 12.0	27-18-01-01
ECLASS 13.0	27-18-01-01	ECLASS 14.0	27-18-01-01
ECLASS 15.0	27-18-01-01		

## KLIPPON K42 VMQ RAL7001

**Weidmüller Interface GmbH & Co. KG**  
 Klingenbergstraße 26  
 D-32758 Detmold  
 Germany

[www.weidmueller.com](http://www.weidmueller.com)

## Accessories

### Klippon® K - Hinge



The system accessories for the Klippon® K enclosure series allows you to easily adapt the enclosures to meet the specific requirements of every application.

- DIN Rails TS 35 and TS15
- Mounting plates
- Hinges
- Wall-mounted holder

Weidmüller can manufacture and supply this enclosure - according to customer specifications - fitted with all necessary terminals and cable glands.

#### General ordering data

Type	HG K+POK	Version
Order No.	<a href="#">1580360000</a>	Klippon POK (polyester empty enclosure), External joint, Hinge, Basic
GTIN (EAN)	4008190203542	material: Aluminium AlSi12, silver
Qty.	1 ST	

### Spacer



Stainless steel spacers in three lengths to increase the distance between the mounting rails or DIN rails and the rear wall of the enclosure.

#### General ordering data

Type	SP M6 15 MSZN	Version
Order No.	<a href="#">3896100000</a>	Klippon EB (Essential Box), Spacer, Height: 11.2 mm, Width: 10 mm,
GTIN (EAN)	4008190857851	Depth: 15 mm, Basic material: Steel, silver
Qty.	2 ST	
Type	SP M6 20 MSZN	Version
Order No.	<a href="#">3896200000</a>	Klippon EB (Essential Box), Spacer, Height: 11.2 mm, Width: 10 mm,
GTIN (EAN)	4008190850234	Depth: 20 mm, Basic material: Steel, silver
Qty.	2 ST	
Type	SP M6 30 MSZN	Version
Order No.	<a href="#">3896300000</a>	Klippon EB (Essential Box), Spacer, Height: 11.2 mm, Width: 10 mm,
GTIN (EAN)	4008190850241	Depth: 30 mm, Basic material: Steel, silver
Qty.	2 ST	

## KLIPPON K42 VMQ RAL7001

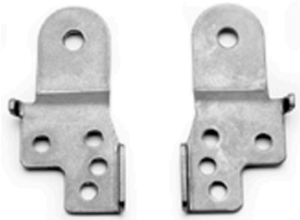
**Weidmüller Interface GmbH & Co. KG**

 Klingenbergstraße 26  
 D-32758 Detmold  
 Germany

[www.weidmueller.com](http://www.weidmueller.com)

## Accessories

### Klippon® K - Wall-mounted holder



The system accessories for the Klippon® K enclosure series allows you to easily adapt the enclosures to meet the specific requirements of every application.

- DIN Rails TS 35 and TS 15
- Mounting plates
- Hinges
- Wall-mounted holder

Weidmüller can manufacture and supply this enclosure - according to customer specifications - fitted with all necessary terminals and cable glands.

#### General ordering data

Type	KLIPPON K MF KIT 25	Version
Order No.	<a href="#">9527590000</a>	Klippon K (aluminium empty enclosure), Mounting foot, Fixing lugs,
GTIN (EAN)	4032248014071	Height: 70 mm, Width: 33.5 mm, Depth: 12 mm, Basic material:
Qty.	1 ST	Stainless steel 1.4301, silver

### Mounting support

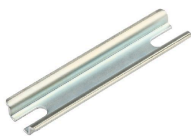


We offer a broad portfolio of mounting support for easy handling and supplementation of our products. From various tools to insulating sleeves and various screws, our components are matched to each other down to the last detail and thus facilitate assembly in compliance with the respective standards and protective regulations.

#### General ordering data

Type	FKSC M5X8 D9/SW2.5	Version
Order No.	<a href="#">0295900000</a>	SAK Series, Allen hex screw, Screws, Number of poles: 1
GTIN (EAN)	4008190133337	
Qty.	50 ST	

### TS 15



The system accessories for the Klippon® K enclosure series allows you to easily adapt the enclosures to meet the specific requirements of every application.

- DIN Rails TS 35 and TS 15
- Mounting plates
- Hinges
- Wall-mounted holder

Weidmüller can manufacture and supply this enclosure - according to customer specifications - fitted with all necessary terminals and cable glands.

#### General ordering data

Type	TS15 ST 120 K42	Version
Order No.	<a href="#">8000135661</a>	Rail, Width: 120 mm, Steel, galvanic zinc plated and passivated
GTIN (EAN)	4099987101363	
Qty.	1 ST	

## KLIPPON K42 VMQ RAL7001

Weidmüller Interface GmbH &amp; Co. KG

Klingenbergstraße 26

D-32758 Detmold

Germany

www.weidmueller.com

## Accessories

## Depth 15 mm



The system accessories for the Klippon® K enclosure series allows you to easily adapt the enclosures to meet the specific requirements of every application.

- DIN Rails TS 35 and TS 15
- Mounting plates
- Hinges
- Wall-mounted holder

Weidmüller can manufacture and supply this enclosure - according to customer specifications - fitted with all necessary terminals and cable glands.

## General ordering data

Type	TS35X15 ST 120 K42	Version
Order No.	<a href="#">8000135662</a>	Rail, TS 35 x 15, Width: 120 mm, without slot, with slot, Steel,
GTIN (EAN)	4099987089968	galvanic zinc plated and passivated
Qty.	1 ST	

## Depth 7.5 mm



The system accessories for the Klippon® K enclosure series allows you to easily adapt the enclosures to meet the specific requirements of every application.

- DIN Rails TS 35 and TS 15
- Mounting plates
- Hinges
- Wall-mounted holder

Weidmüller can manufacture and supply this enclosure - according to customer specifications - fitted with all necessary terminals and cable glands.

## General ordering data

Type	TS35X7.5 ST 120 K42	Version
Order No.	<a href="#">8000135673</a>	Rail, TS 35 x 7.5, Width: 120 mm, with slot, Steel, galvanic zinc
GTIN (EAN)	4099987090070	plated and passivated
Qty.	1 ST	