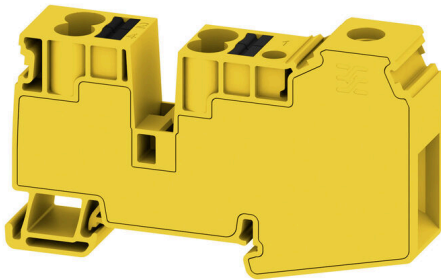


**AWPD 35 4X10 FE****Weidmüller Interface GmbH & Co. KG**

Klingenbergstraße 26

D-32758 Detmold

Germany

[www.weidmueller.com](http://www.weidmueller.com)

Our feed-in terminal blocks in combination with cross-connections offer the possibility of flexible potential distribution on terminal blocks with a different rated cross-section.

**General ordering data**

Version	Potential distributor terminal, Screw connection, black/yellow, 35 mm <sup>2</sup> , 110 A, 1000 V, Number of connections: 5, Number of levels: 1
Order No.	<a href="#">2924990000</a>
Type	AWPD 35 4X10 FE
GTIN (EAN)	4099986639171
Qty.	20 items

## AWPD 35 4X10 FE

Weidmüller Interface GmbH &amp; Co. KG

Klingenbergstraße 26  
D-32758 Detmold  
Germany

www.weidmueller.com

## Technical data

## Approvals

Approvals



ROHS Conform

UL File Number Search [UL Website](#)

Certificate No. (cURus) E60693

## Dimensions and weights

Depth	51.6 mm	Depth (inches)	2.0315 inch
Height	86.18 mm	Height (inches)	3.3929 inch
Width	16.2 mm	Width (inches)	0.6378 inch
Net weight	40 g		

## Temperatures

Storage temperature	-25 °C...55 °C	Ambient temperature	-60 °C...65 °C
Continuous operating temp., min.	-60 °C	Continuous operating temp., max.	110 °C

## Environmental Product Compliance

RoHS Compliance Status	Compliant without exemption
REACH SVHC	No SVHC above 0.1 wt%

## Material data

Basic material	Wemid	Colour	black/yellow
Colour of operational elements	orange	UL 94 flammability rating	V-0

## System specifications

Version	Hybrid terminal, Potential distributor	End cover plate required	No
Number of potentials	1	Number of levels	1
Number of clamping points per level	5	Number of potentials per tier	1
Levels cross-connected internally	No	Mounting rail	TS 35
N-function	No	PE function	No
PEN function	No		

## Additional technical data

Open sides	closed	Snap-on	Yes
Explosion-tested version	No	Type of mounting	TS 35

## Conductors for clamping (additional connection)

Clamping range, further connection, max.	10 mm <sup>2</sup>	Clamping range, further connection, min.	0.5 mm <sup>2</sup>
Conductor cross-section, flexible plus plastic collar DIN 46228/1, further connection, max.	10 mm <sup>2</sup>	Conductor cross-section, flexible plus plastic collar DIN 46228/1, further connection, min.	0.5 mm <sup>2</sup>
Conductor cross-section, flexible, further connection, min.	0.5 mm <sup>2</sup>	Rated cross-section, further connection	6 mm <sup>2</sup>
Cross-section for connected wire, multi-core, further connection, min.	0.5 mm <sup>2</sup>	Cross-section for connected wire, multi-core, further connection, max.	10 mm <sup>2</sup>

## AWPD 35 4X10 FE

**Weidmüller Interface GmbH & Co. KG**

Klingenbergstraße 26  
D-32758 Detmold  
Germany

www.weidmueller.com

## Technical data

Cross-section for connected wire, AWG, AWG 20 additional connection, min.

Cross-section for connected wire, solid-core, further connection, max. 0.5 mm<sup>2</sup>

Cross-section for connected wire, flexible, further connection, max. 10 mm<sup>2</sup>

Cross-section for connected wire, solid-core, further connection, min. 0.5 mm<sup>2</sup>

Connection type, additional connection PUSH IN

Cross-section for connected wire, AWG, AWG 6 additional connection, max.

### Conductors for clamping (rated connection)

Gauge to IEC 60947-1	B9
Connection direction	top
Tightening torque, min.	2.5 Nm
Type of connection 2	PUSH IN
Number of connections	5
Clamping range, min.	1.5 mm <sup>2</sup>
Blade size	1 x 5.5
Wire connection cross-section, finely stranded with wire-end ferrules DIN 46228/4, max.	35 mm <sup>2</sup>
Wire connection cross-section, finely stranded with wire-end ferrules DIN 46228/1, max.	35 mm <sup>2</sup>
Wire connection cross section, finely stranded, max.	35 mm <sup>2</sup>
Connection cross-section, stranded, max.	35 mm <sup>2</sup>
Twin wire-end ferrules, max.	6 mm <sup>2</sup>
Wire connection cross-section, solid core, max.	35 mm <sup>2</sup>

Wire connection cross section AWG, max.	AWG 14
Tightening torque, max.	2.5 Nm
Stripping length	17 mm
Type of connection	Screw connection
Clamping range, max.	35 mm <sup>2</sup>
Clamping screw	M 6
Wire connection cross section AWG, min.	AWG 2
Wire connection cross-section, finely stranded with wire-end ferrules DIN 46228/4, min.	1.5 mm <sup>2</sup>
Wire connection cross-section, finely stranded with wire-end ferrules DIN 46228/1, min.	1.5 mm <sup>2</sup>
Wire connection cross section, finely stranded, min.	1.5 mm <sup>2</sup>
Connection cross-section, stranded, min.	1.5 mm <sup>2</sup>
Twin wire-end ferrules, min.	1.5 mm <sup>2</sup>
Wire connection cross-section, solid core, min.	1.5 mm <sup>2</sup>

### General

Wire connection cross section AWG, max.	AWG 14
Standards	IEC 60947-7-1

Wire connection cross section AWG, min.	AWG 2
Mounting rail	TS 35

### Rating data

Rated cross-section	35 mm <sup>2</sup>
Rated AC voltage	1000 V
Nominal current	110 A
Standards	IEC 60947-7-1
Rated impulse withstand voltage	8 kV
Surge voltage category	III

Rated voltage	1000 V
Rated DC voltage	1000 V
Current at maximum wires	110 A
Volume resistance according to IEC 60947-7-x	0.26 mΩ
Power loss in accordance with IEC 60947-7-x	4.00 W
Pollution severity	3

### UL rating data

Conductor size Factory wiring max. (cURus)	2 AWG
Conductor size Field wiring min. (cURus)	14 AWG
Conductor size Field wiring max. (cURus)	2 AWG

Certificate No. (cURus)	E60693
Conductor size Factory wiring min. (cURus)	14 AWG

## Technical data

### Classifications

ETIM 8.0	EC000897	ETIM 9.0	EC000897
ETIM 10.0	EC000897	ECLASS 14.0	27-25-01-19
ECLASS 15.0	27-25-01-19		

**AWPD 35 4X10 FE**

**Weidmüller Interface GmbH & Co. KG**  
Klingenbergstraße 26  
D-32758 Detmold  
Germany

**Drawings**

[www.weidmueller.com](http://www.weidmueller.com)

