

## IE-SW-BLB-08-8GTPOE

**Weidmüller Interface GmbH & Co. KG**

Klingenbergstraße 26

D-32758 Detmold

Germany

[www.weidmueller.com](http://www.weidmueller.com)



### Features of BasicLine series B Power-over-Ethernet unmanaged switches

- Variants with 4 or 8 IEEE 802.3af/at/bt compliant PoE ports (up to 60 watt power output per PoE port) up to 144 watt total power budget
- Integrated DC/DC converter for providing PoE voltage to PDs over the entire PSE input voltage range from 12 to 57 V DC
- Models supporting Gigabit Ethernet including Jumbo Frame support for applications with high demand on bandwidth and latency
- Optimized DIN-rail clip as well as PUSH IN Connectors for fast and easy installation
- Suitable for use in any environment thanks to a large number of certifications
- Reliable operation due to redundant voltage inputs, fault relay and LED diagnostics

### General ordering data

Version	Network switch, unmanaged PoE, Gigabit Ethernet, Number of ports: 8x RJ45 PoE++, IP30, -40 °C...75 °C
Order No.	<a href="#">2908230000</a>
Type	IE-SW-BLB-08-8GTPOE
GTIN (EAN)	4099986848207
Qty.	1 items

## IE-SW-BLB-08-8GTPOE

**Weidmüller Interface GmbH & Co. KG**  
 Klingenbergstraße 26  
 D-32758 Detmold  
 Germany

www.weidmueller.com

## Technical data

### Approvals

Approvals



ROHS	Conform
UL File Number Search	<a href="#">UL Website</a>
Certificate no. (cULus)	E141197
Certificate no. (cULusEX)	E223527

### Dimensions and weights

Depth	95 mm	Depth (inches)	3.7401 inch
Height	144 mm	Height (inches)	5.6693 inch
Width	44 mm	Width (inches)	1.7323 inch
Net weight	674 g		

### Temperatures

Storage temperature	-40 °C...85 °C	Operating temperature	-40 °C...75 °C
Humidity	5 to 95 % (non-condensing)		

### Environmental Product Compliance

RoHS Compliance Status	Compliant with exemption
RoHS Exemption (if applicable/known)	7a, 7cl
REACH SVHC	Lead 7439-92-1, Lead monoxide 1317-36-8
SCIP	aa4e94ed-b5d0-4245-91e3-1adf29647214

### EMC conformity and approvals

Free fall	According to IEC 60068-2-31	EMC standards	EN IEC 61000-6-2, EN IEC 61000-6-4, FCC Part 15 Subpart B Class A, IEC 61000-4-2 ESD: Contact: 6 kV; Air: 8 kV, IEC 61000-4-3 RS: 80 MHz to 1 Ghz: 10 V/m, IEC 61000-4-3 RS: 1.4 GHz to 6 Ghz: 3 V/m, IEC 61000-4-4 EFT: Power: 4 kV; Signal: 2 kV, IEC 61000-4-5 Surge: Power: 2 kV; Signal: 2 kV, IEC 61000-4-6 CS: 10 Vrms, IEC 61000-4-8 PFMF: 30 A/m
Vibration	according to IEC 60068-2-6	Shock	according to IEC 60068-2-27
Safety standard	UL 61010-1, UL 61010-2-201		

**IE-SW-BLB-08-8GTPOE**

**Weidmüller Interface GmbH & Co. KG**  
 Klingenbergstraße 26  
 D-32758 Detmold  
 Germany

www.weidmueller.com

**Technical data**

**Environmental conditions**

Operating temperature, max.	75 °C	
Operating temperature, min.	-40 °C	
Humidity	5 to 95 % (non-condensing)	
Storage temperature, max.	85 °C	
Storage temperature, min.	-40 °C	
Operating altitude	Altitude, max.	2000 m
	Note	in acc. with UL

**Guarantee**

Time interval	5 years
---------------	---------

**Interfaces**

RJ45 ports	10/100/1000BaseT(X), auto negotiation, Full-/half-duplex mode, Auto MDI/MDI-X port	Function DIP switch	QoS (on/off), Broadcast storm protection enable/disable, MAC frame filtering (on/off), Activate/deactivate IEEE 802.3az energy-efficient Ethernet, 2x for enabling/disabling power fault alarm via relay
Alarm contact	1 relay output with a current capacity of 1 A at 24 V DC	Signalling contact	1 relay output with a current capacity of 1 A at 24 V DC
Number of ports	8x RJ45 PoE++	LED indicator	Power LED: PWR1, PWR2, Port LED: LNK/ACT, 10/100/1000M (RJ45 port)

**MTBF**

MTBF	According to Standard	Telcordia SR-332
	Operating time (hours), min.	565005 h
	Ambient temperature	25 °C

**Management features**

Network traffic filter	Quality of Service (QoS), Class of Service (CoS), Type of Service (ToS), Differentiated Services Code Point (DSCP), MAC frame filtering (LLDP frame blocking)	Industrial protocol support	PROFINET device acc. to conformance class A
------------------------	---	-----------------------------	---

**Power over Ethernet (PoE)**

PoE output power	Standard	IEEE 802.3af
	Output power	15.4 W
	Standard	IEEE 802.3at
	Output power	30 W
	Standard	IEEE 802.3bt
	Output power	60 W
PoE output current	Standard	IEEE 802.3af
	Standard	IEEE 802.3at
	Standard	IEEE 802.3bt
Total PoE power budget	Voltage type	DC

## IE-SW-BLB-08-8GTPOE

**Weidmüller Interface GmbH & Co. KG**  
 Klingenbergstraße 26  
 D-32758 Detmold  
 Germany

www.weidmueller.com

## Technical data

	Voltage, min.	12 V
	Voltage, max.	23.9 V
	Power budget	60 W
	Voltage type	DC
	Voltage, min.	24 V
	Voltage, max.	47.9 V
	Power budget	120 W
	Voltage type	DC
	Voltage, min.	48 V
	Voltage, max.	57 V
	Power budget	144 W
PoE pin assignment	Mode A: Pin 1, 2 (V-); Pin 3, 6 (V+); Alternative A: MDI-X / Mode B: Pin 4, 5 (V+); Pin 7, 8 (V-); Alternative B: MDI-X	

### Power supply

Reverse polarity protection	Yes	
Supply voltage	2 redundant inputs	
Overload current protection	Yes	
Connection type	1 removable 6-pin terminal block	
Voltage supply range	Voltage type	DC
	Voltage, min.	12 V
	Voltage, max.	57 V
Current consumption	Voltage	12 V
	Voltage type	DC
	Current consumption with Powered Device (PD)	6.88 A
	Current consumption without Powered Device (PD)	540 mA
	Voltage	24 V
	Voltage type	DC
	Current consumption with Powered Device (PD)	5.89 A
	Current consumption without Powered Device (PD)	600 mA
	Voltage	48 V
	Voltage type	DC
	Current consumption with Powered Device (PD)	3.32 A
	Current consumption without Powered Device (PD)	140 mA

### Switch characteristics

MAC table size	4 K	Packet buffer size	1.5 Mbit
Bandwidth backplane	1.6 Gbit/s	Jumbo frame support	up to 9 KB

### Technical data

Housing main material	Metal	Type of mounting	DIN rail
Protection degree	IP30	Speed	Gigabit Ethernet
Switch	unmanaged PoE		

### Classifications

ETIM 8.0	EC000734	ETIM 9.0	EC000734
ETIM 10.0	EC000734	ECLASS 14.0	19-17-04-10
ECLASS 15.0	19-17-04-10		

## IE-SW-BLB-08-8GTPOE

**Weidmüller Interface GmbH & Co. KG**  
 Klingenbergstraße 26  
 D-32758 Detmold  
 Germany

www.weidmueller.com

## Accessories

### Mounting kit for 19" rack assembly

- For assembling DIN rail-based devices on 19" racks



#### General ordering data

Type	RM-KIT	Version	
Order No.	<a href="#">1241440000</a>	Kit for 19"-rack mounting	
GTIN (EAN)	4050118029154		
Qty.	1 ST		

### Mounting kit for wall mounting (BasicLine series B)



Mounting kit for wall mounting (BasicLine series B):  
 Mounting kit for alternative wall-mounting of DIN rail-based (top-hat type) Industrial Ethernet BasicLine B series components.

IE-WALLMOUNT-KIT-MODEL-A for use with:

- Industrial Ethernet Switches of the product range IE-SW- BLB05/BLB08/BLB10

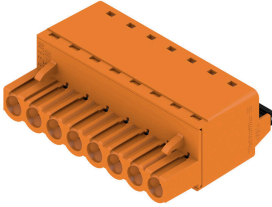
IE-WALLMOUNT-KIT-MODEL-B for use with:

- Industrial Ethernet Switches of the product ranges IE-SW- BLB16/BLB18/BLB24

#### General ordering data

Type	IE-WALLMOUNT-KIT-MODEL-B	Version	
Order No.	<a href="#">3032770000</a>	Kit for wall mounting	
GTIN (EAN)	4099986984523		
Qty.	1 ST		

## BLF 5.08HC/180 SN



Just as reliable as the millionfold proven original and featuring innovative details:

The BLF 5.08HC PUSH IN version of the BLZP 5.08HC female connector is not only different in terms of connection system; it also has a more compact design. Weidmüller's innovative PUSH IN spring connection system stands for the future of easy and tool-free wire connection. HC = High Current.

In terms of versatility, the BLF 5.08HC offers just as much as the version which served as a model:

- 3 tested-and-proven wire outlet directions provide the usual flexibility for application-specific design
- 4 flange variations and the patented release latch allow the locking concept to be based on the requirements of the user
- Use the BLF 5.08HC and SL 5.08HC plug combination to reach the max. rated specifications

## General ordering data

Type	BLF 5.08HC/06/180 SN BK...	Version
Order No.	<a href="#">1013470000</a>	PCB plug-in connector, female plug, 5.08 mm, Number of poles: 6,
GTIN (EAN)	4032248721627	180°, PUSH IN with actuator, Clamping range, max. : 3.31 mm², Box
Qty.	60 ST	