

IE-SW-BLB-08-6TX-2FESFP**Weidmüller Interface GmbH & Co. KG**

Klingenbergstraße 26

D-32758 Detmold

Germany

www.weidmueller.com**Features of BasicLine Series B Switches**

- Support real time communication e.g. in PROFINET networks due to the "Quality of Service" and "LLDP frame blocking" functionality – "PROFINET Conformance Class A"
- Large number of certifications to fit any requirements of mechanical and EMC influences, ideal for application areas such as offshore, process or mining
- Optimized DIN-rail clip as well as PUSH IN Connectors for fast and easy installation
- Covers the most common port combinations with RJ45 and SFP ports for flexible usage
- AC/DC power supply input
- Network availability is strongly increased thanks to Broadcast Storm Protection
- Energy Efficient Ethernet and plastic-free packaging

General ordering data

Version	Network switch, unmanaged, Fast Ethernet, Number of ports: 6x RJ45, 2x 100BaseSFP slot, IP30, -40 °C...75 °C
Order No.	2908160000
Type	IE-SW-BLB-08-6TX-2FESFP
GTIN (EAN)	4099986847910
Qty.	1 items

IE-SW-BLB-08-6TX-2FESFP

Weidmüller Interface GmbH & Co. KG
 Klingenbergstraße 26
 D-32758 Detmold
 Germany

www.weidmueller.com

Technical data

Approvals

Approvals



ROHS	Conform
UL File Number Search	UL Website
Certificate no. (cULus)	E141197
Certificate no. (cULusEX)	E223527

Dimensions and weights

Depth	70 mm	Depth (inches)	2.7559 inch
Height	114 mm	Height (inches)	4.4882 inch
Width	44 mm	Width (inches)	1.7323 inch
Net weight	359 g		

Temperatures

Storage temperature	-40 °C...85 °C	Operating temperature	-40 °C...75 °C
Humidity	5 to 95 % (non-condensing)		

Environmental Product Compliance

RoHS Compliance Status	Compliant with exemption
RoHS Exemption (if applicable/known)	7a, 7cl
REACH SVHC	Lead 7439-92-1, Lead monoxide 1317-36-8
SCIP	9229992a-00b9-4096-8962-200a7f33e289

EMC conformity and approvals

Explosive risk zone	EN IEC 60079-0, EN IEC 60079-7, UL/cUL, Class I, Division 2, Groups A, B, C and D, ATEX Zone 2 Ex ec IIC T4 Gc	Free fall	According to IEC 60068-2-31
EMC standards	EN IEC 61000-6-2, EN IEC 61000-6-4, FCC Part 15 Subpart B Class A, IEC 61000-4-2 ESD: Contact: 6 kV; Air: 8 kV, IEC 61000-4-3 RS: 80 MHz to 1 GHz: 10 V/m, IEC 61000-4-3 RS: 1.4 GHz to 6 GHz: 3 V/m, IEC 61000-4-4 EFT: Power: 4 kV; Signal: 2 kV, IEC 61000-4-5 Surge: Power: 2 kV; Signal: 2 kV, IEC 61000-4-6 CS: 10 Vrms, IEC 61000-4-8 PFMF: 30 A/m	Vibration	according to IEC 60068-2-6

IE-SW-BLB-08-6TX-2FESFP

Weidmüller Interface GmbH & Co. KG
 Klingenbergstraße 26
 D-32758 Detmold
 Germany

www.weidmueller.com

Technical data

Shock	according to IEC 60068-2-27	Ship use	DNV, BV, ABS, LR, RINA pending approval
Safety standard	UL 61010-1, UL 61010-2-201		

Environmental conditions

Operating temperature, max.	75 °C		
Operating temperature, min.	-40 °C		
Humidity	5 to 95 % (non-condensing)		
Storage temperature, max.	85 °C		
Storage temperature, min.	-40 °C		
Operating altitude	Altitude, max.	2000 m	
	Note	in acc. with UL	
	Altitude, max.	6000 m	
	Note	for restrictions, see the manufacturer's declaration for operating altitude in section downloads	

Guarantee

Time interval	5 years
---------------	---------

Interfaces

Fibre-optic ports	100BaseSFP-Slot	RJ45 ports	10/100BaseT(X), auto negotiation, Full-/half-duplex mode, Auto MDI/MDI-X port
Function DIP switch	QoS (on/off), Broadcast storm protection enable/disable, MAC frame filtering (on/off), Activate/deactivate IEEE 802.3az energy-efficient Ethernet	Number of ports	6x RJ45, 2x 100BaseSFP slot
LED indicator	Power LED: PWR1, PWR2, Port LED: LNK/ACT, 10/100M (RJ45 port), Power LED: PWR FLT		

MTBF

MTBF	According to Standard	Telcordia SR-332
	Operating time (hours), min.	1448944 h
	Input voltage	24 V

Management features

Network traffic filter	Quality of Service (QoS), Class of Service (CoS), Type of Service (ToS), Differentiated Services Code Point (DSCP), MAC frame filtering (LLDP frame blocking)	Industrial protocol support	PROFINET device acc. to conformance class A
------------------------	---	-----------------------------	---

Power supply

Reverse polarity protection	Yes
Current consumption	0.1 A
Supply voltage	12/24/48 V DC, 24 V AC, 2 redundant inputs

IE-SW-BLB-08-6TX-2FESFP

Weidmüller Interface GmbH & Co. KG

Klingenbergstraße 26

D-32758 Detmold

Germany

www.weidmueller.com

Technical data

Overload current protection	Yes	
Connection type	1 removable 4-pin terminal block	
Voltage supply range	Voltage type	DC
	Voltage, min.	9 V
	Voltage, max.	60 V
	Voltage type	AC
	Voltage, min.	18 V
	Voltage, max.	30 V
Current consumption	Voltage	24 V
	Current	0.1 A
	Voltage type	DC

Switch characteristics

Priority queues	4	MAC table size	2 K
Packet buffer size	768 kBit	Bandwidth backplane	1.6 Gbit/s

Technical data

Housing main material	Metal	Type of mounting	DIN rail
Protection degree	IP30	Speed	Fast Ethernet
Switch	unmanaged		

Technology

Data switching	Store and Forward	Flow control	IEEE 802.3x flow control
Standard	IEEE 802.3 for 10BASE-T, IEEE 802.3x for flow control, IEEE 802.3az Energy-Efficient Ethernet, IEEE 802.1p for Class of Service / Quality of Service (CoS/QoS), IEEE 802.3u for 100BaseT(X) and 100BaseFX		

Classifications

ETIM 6.0	EC000734	ETIM 7.0	EC000734
ETIM 8.0	EC000734	ETIM 9.0	EC000734
ETIM 10.0	EC000734	ECLASS 9.0	19-17-01-06
ECLASS 9.1	19-17-01-06	ECLASS 10.0	19-17-04-02
ECLASS 11.0	19-17-04-02	ECLASS 12.0	19-17-04-02
ECLASS 13.0	19-17-04-02	ECLASS 14.0	19-17-04-02
ECLASS 15.0	19-17-04-02		

IE-SW-BLB-08-6TX-2FESFP

Weidmüller Interface GmbH & Co. KG

Klingenbergstraße 26

D-32758 Detmold

Germany

www.weidmueller.com

Accessories

SFP transceiver (for use with switches of Eco-, Advanced-, Substation and BasicLine series B)



Features of SFP-Transceiver series

- Huge variety of transceiver types for several transmission speeds (up to 10 Gigabit Ethernet) and distances (up to 60 km)
- BiDi SFP models for communication via single fiber
- Easy control of transceiver status due to support of Digital Diagnostic Monitoring (DDM)
- Hot pluggable (during operation)
- Class 1 laser product, EN60825-1 compliant
- Applicable for switches of the Eco-, Advanced- and SubstationLine

General ordering data

Type	IE-SFP-1FE-MM-2	Version
Order No.	2682450000	SFP Transceiver, 100 Mbps, Multimode, LC-Duplex, 4 km, -40 °C...85 °C
GTIN (EAN)	4050118692266	
Qty.	1 ST	
Type	IE-SFP-1FE-SM-30	Version
Order No.	2682460000	SFP Transceiver, 100 Mbps, Singlemode, LC-Duplex, 30 km, -40 °C...85 °C
GTIN (EAN)	4050118692259	
Qty.	1 ST	
Type	IE-SFP-1FE-SM-60	Version
Order No.	2682470000	SFP Transceiver, 100 Mbps, Singlemode, LC-Duplex, 60 km, -40 °C...85 °C
GTIN (EAN)	4050118692242	
Qty.	1 ST	

Mounting kit for 19" rack assembly

- For assembling DIN rail-based devices on 19" racks



General ordering data

Type	RM-KIT	Version
Order No.	1241440000	Kit for 19"-rack mounting
GTIN (EAN)	4050118029154	
Qty.	1 ST	

IE-SW-BLB-08-6TX-2FESFP

Weidmüller Interface GmbH & Co. KG
 Klingenbergstraße 26
 D-32758 Detmold
 Germany

www.weidmueller.com

Accessories

Mounting kit for wall mounting (BasicLine series B)



Mounting kit for wall mounting (BasicLine series B):
 Mounting kit for alternative wall-mounting of DIN rail-based (top-hat type) Industrial Ethernet BasicLine B series components.

IE-WALLMOUNT-KIT-MODEL-A for use with:

- Industrial Ethernet Switches of the product range IE-SW- BLB05/BLB08/BLB10

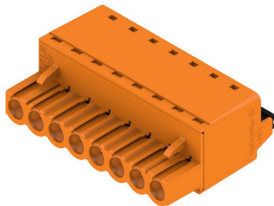
IE-WALLMOUNT-KIT-MODEL-B for use with:

- Industrial Ethernet Switches of the product ranges IE-SW- BLB16/BLB18/BLB24

General ordering data

Type	IE-WALLMOUNT-KIT-MODEL-A	Version
Order No.	3032760000	Kit for wall mounting
GTIN (EAN)	4099986984516	
Qty.	1 ST	

BLF 5.08HC/180 SN



Just as reliable as the millionfold proven original and featuring innovative details:

The BLF 5.08HC PUSH IN version of the BLZP 5.08HC female connector is not only different in terms of connection system; it also has a more compact design. Weidmüller's innovative PUSH IN spring connection system stands for the future of easy and tool-free wire connection. HC = High Current.

In terms of versatility, the BLF 5.08HC offers just as much as the version which served as a model:

- 3 tested-and-proven wire outlet directions provide the usual flexibility for application-specific design
- 4 flange variations and the patented release latch allow the locking concept to be based on the requirements of the user
- Use the BLF 5.08HC and SL 5.08HC plug combination to reach the max. rated specifications

General ordering data

Type	BLF 5.08HC/04/180 SN BK...	Version
Order No.	1013450000	PCB plug-in connector, female plug, 5.08 mm, Number of poles: 4,
GTIN (EAN)	4032248721603	180°, PUSH IN with actuator, Clamping range, max. : 3.31 mm², Box
Qty.	90 ST	