

**IE-SW-BLB-08-7TX-1FESFP****Weidmüller Interface GmbH & Co. KG**Klingenbergstraße 26  
D-32758 Detmold  
Germany[www.weidmueller.com](http://www.weidmueller.com)**Features of BasicLine Series B Switches**

- Support real time communication e.g. in PROFINET networks due to the "Quality of Service" and "LLDP frame blocking" functionality – "PROFINET Conformance Class A"
- Large number of certifications to fit any requirements of mechanical and EMC influences, ideal for application areas such as offshore, process or mining
- Optimized DIN-rail clip as well as PUSH IN Connectors for fast and easy installation
- Covers the most common port combinations with RJ45 and SFP ports for flexible usage
- AC/DC power supply input
- Network availability is strongly increased thanks to Broadcast Storm Protection
- Energy Efficient Ethernet and plastic-free packaging

**General ordering data**

|            |  |
|------------|--|
| Version    | Network switch, unmanaged, Fast Ethernet, Number of ports: 7x RJ45, 1x 100BaseSFP slot, IP30, -40 °C...75 °C |
| Order No.  | <a href="#">2908150000</a>   |
| Type       | IE-SW-BLB-08-7TX-1FESFP  |
| GTIN (EAN) | 4099986847859  |
| Qty.       | 1 items  |

## IE-SW-BLB-08-7TX-1FESFP

**Weidmüller Interface GmbH & Co. KG**  
Klingenbergstraße 26  
D-32758 Detmold  
Germany

www.weidmueller.com

## Technical data

## Approvals

Approvals



|                           |                            |
|---------------------------|----------------------------|
| ROHS                      | Conform                    |
| UL File Number Search     | <a href="#">UL Website</a> |
| Certificate no. (cULus)   | E141197                    |
| Certificate no. (cULusEX) | E223527                    |

## Dimensions and weights

|            |        |                 |             |
|------------|--------|-----------------|-------------|
| Depth      | 70 mm  | Depth (inches)  | 2.7559 inch |
| Height     | 114 mm | Height (inches) | 4.4882 inch |
| Width      | 44 mm  | Width (inches)  | 1.7323 inch |
| Net weight | 355 g  |                 |             |

## Temperatures

|                     |                            |                       |                |
|---------------------|----------------------------|-----------------------|----------------|
| Storage temperature | -40 °C...85 °C             | Operating temperature | -40 °C...75 °C |
| Humidity            | 5 to 95 % (non-condensing) |                       |                |

## Environmental Product Compliance

|                                      |   |
|--------------------------------------|---|
| RoHS Compliance Status               | Compliant with exemption                |
| RoHS Exemption (if applicable/known) | 7a, 7cl                                 |
| REACH SVHC                           | Lead 7439-92-1, Lead monoxide 1317-36-8 |
| SCIP                                 | 9229992a-00b9-4096-8962-200a7f33e289    |

## EMC conformity and approvals

|                     |   |           |                             |
|---------------------|---|-----------|-----------------------------|
| Explosive risk zone | EN IEC 60079-0, EN IEC 60079-7, UL/cUL, Class I, Division 2, Groups A, B, C and D, ATEX Zone 2 Ex ec IIC T4 Gc  | Free fall | According to IEC 60068-2-31 |
| EMC standards       | EN IEC 61000-6-2, EN IEC 61000-6-4, FCC Part 15 Subpart B Class A, IEC 61000-4-2 ESD: Contact: 6 kV; Air: 8 kV, IEC 61000-4-3 RS: 80 MHz to 1 Ghz: 10 V/m, IEC 61000-4-3 RS: 1.4 GHz to 6 Ghz: 3 V/m, IEC 61000-4-4 EFT: Power: 4 kV; Signal: 2 kV, IEC 61000-4-5 Surge: Power: 2 kV; Signal: 2 kV, IEC 61000-4-6 CS: 10 Vrms, IEC 61000-4-8 PFMF: 30 A/m | Vibration | according to IEC 60068-2-6  |

## IE-SW-BLB-08-7TX-1FESFP

Weidmüller Interface GmbH &amp; Co. KG

Klingenbergstraße 26

D-32758 Detmold

Germany

www.weidmueller.com

## Technical data

|                 |                             |          |   |
|-----------------|-----------------------------|----------|---|
| Shock           | according to IEC 60068-2-27 | Ship use | DNV, BV, ABS, LR, RINA pending approval |
| Safety standard | UL 61010-1, UL 61010-2-201  |          |   |

## Environmental conditions

|                             |                            |  |  |
|-----------------------------|----------------------------|--|--|
| Operating temperature, max. | 75 °C                      |  |  |
| Operating temperature, min. | -40 °C                     |  |  |
| Humidity                    | 5 to 95 % (non-condensing) |  |  |
| Storage temperature, max.   | 85 °C                      |  |  |
| Storage temperature, min.   | -40 °C                     |  |  |
| Operating altitude          | Altitude, max.             | 2000 m   |  |
|                             | Note                       | in acc. with UL  |  |
|                             | Altitude, max.             | 6000 m   |  |
|                             | Note                       | for restrictions, see the manufacturer's declaration for operating altitude in section downloads |  |

## Guarantee

|               |         |
|---------------|---------|
| Time interval | 5 years |
|---------------|---------|

## Interfaces

|                     |   |                 |   |
|---------------------|---|-----------------|---|
| Fibre-optic ports   | 100BaseSFP-Slot   | RJ45 ports      | 10/100BaseT(X), auto negotiation, Full-/half-duplex mode, Auto MDI/MDI-X port |
| Function DIP switch | QoS (on/off), Broadcast storm protection enable/disable, MAC frame filtering (on/off), Activate/deactivate IEEE 802.3az energy-efficient Ethernet | Number of ports | 7x RJ45, 1x 100BaseSFP slot   |
| LED indicator       | Power LED: PWR1, PWR2, Port LED: LNK/ACT, 10/100M (RJ45 port), Power LED: PWR FLT   |                 |   |

## MTBF

|      |                              |                  |
|------|------------------------------|------------------|
| MTBF | According to Standard        | Telcordia SR-332 |
|      | Operating time (hours), min. | 1379287 h        |

## Management features

|                        |   |                             |   |
|------------------------|---|-----------------------------|---|
| Network traffic filter | Quality of Service (QoS), Class of Service (CoS), Type of Service (ToS), Differentiated Services Code Point (DSCP), MAC frame filtering (LLDP frame blocking) | Industrial protocol support | PROFINET device acc. to conformance class A |
|------------------------|---|-----------------------------|---|

## Power supply

|                             |  |
|-----------------------------|--|
| Reverse polarity protection | Yes  |
| Current consumption         | 0.1 A                                      |
| Supply voltage              | 12/24/48 V DC, 24 V AC, 2 redundant inputs |
| Overload current protection | Yes  |

## IE-SW-BLB-08-7TX-1FESFP

Weidmüller Interface GmbH &amp; Co. KG

Klingenbergstraße 26

D-32758 Detmold

Germany

www.weidmueller.com

## Technical data

|                      |                                  |       |
|----------------------|----------------------------------|-------|
| Connection type      | 1 removable 4-pin terminal block |       |
| Voltage supply range | Voltage type                     | DC    |
|                      | Voltage, min.                    | 9 V   |
|                      | Voltage, max.                    | 60 V  |
|                      | Voltage type                     | AC    |
|                      | Voltage, min.                    | 18 V  |
|                      | Voltage, max.                    | 30 V  |
| Current consumption  | Voltage                          | 24 V  |
|                      | Current                          | 0.1 A |
|                      | Voltage type                     | DC    |

## Switch characteristics

|                    |          |                     |            |
|--------------------|----------|---------------------|------------|
| Priority queues    | 4        | MAC table size      | 2 K        |
| Packet buffer size | 768 kBit | Bandwidth backplane | 1.6 Gbit/s |

## Technical data

|                       |           |                  |               |
|-----------------------|-----------|------------------|---------------|
| Housing main material | Metal     | Type of mounting | DIN rail      |
| Protection degree     | IP30      | Speed            | Fast Ethernet |
| Switch                | unmanaged |                  |               |

## Technology

|                |   |              |                          |
|----------------|---|--------------|--------------------------|
| Data switching | Store and Forward   | Flow control | IEEE 802.3x flow control |
| Standard       | IEEE 802.3 for 10BASE-T, IEEE 802.3x for flow control, IEEE 802.3az Energy-Efficient Ethernet, IEEE 802.1p for Class of Service / Quality of Service (CoS/QoS), IEEE 802.3u for 100BaseT(X) and 100BaseFX |              |                          |

## Classifications

|             |             |             |             |
|-------------|-------------|-------------|-------------|
| ETIM 8.0    | EC000734    | ETIM 9.0    | EC000734    |
| ETIM 10.0   | EC000734    | ECLASS 14.0 | 19-17-04-02 |
| ECLASS 15.0 | 19-17-04-02 |             |             |

## IE-SW-BLB-08-7TX-1FESFP

Weidmüller Interface GmbH &amp; Co. KG

Klingenbergstraße 26

D-32758 Detmold

Germany

www.weidmueller.com

## Accessories

## SFP transceiver (for use with switches of Eco-, Advanced-, Substation and BasicLine series B)



## Features of SFP-Transceiver series

- Huge variety of transceiver types for several transmission speeds (up to 10 Gigabit Ethernet) and distances (up to 60 km)
- BiDi SFP models for communication via single fiber
- Easy control of transceiver status due to support of Digital Diagnostic Monitoring (DDM)
- Hot pluggable (during operation)
- Class 1 laser product, EN60825-1 compliant
- Applicable for switches of the Eco-, Advanced- and SubstationLine

## General ordering data

|            |                            |   |
|------------|----------------------------|---|
| Type       | IE-SFP-1FE-MM-2            | Version   |
| Order No.  | <a href="#">2682450000</a> | SFP Transceiver, 100 Mbps, Multimode, LC-Duplex, 4 km, -40 °C...85 °C   |
| GTIN (EAN) | 4050118692266              |   |
| Qty.       | 1 ST                       |   |
| Type       | IE-SFP-1FE-SM-30           | Version   |
| Order No.  | <a href="#">2682460000</a> | SFP Transceiver, 100 Mbps, Singlemode, LC-Duplex, 30 km, -40 °C...85 °C |
| GTIN (EAN) | 4050118692259              |   |
| Qty.       | 1 ST                       |   |
| Type       | IE-SFP-1FE-SM-60           | Version   |
| Order No.  | <a href="#">2682470000</a> | SFP Transceiver, 100 Mbps, Singlemode, LC-Duplex, 60 km, -40 °C...85 °C |
| GTIN (EAN) | 4050118692242              |   |
| Qty.       | 1 ST                       |   |

## Mounting kit for 19" rack assembly

- For assembling DIN rail-based devices on 19" racks



## General ordering data

|            |                            |                           |
|------------|----------------------------|---------------------------|
| Type       | RM-KIT                     | Version                   |
| Order No.  | <a href="#">1241440000</a> | Kit for 19"-rack mounting |
| GTIN (EAN) | 4050118029154              |                           |
| Qty.       | 1 ST                       |                           |

## IE-SW-BLB-08-7TX-1FESFP

Weidmüller Interface GmbH &amp; Co. KG

Klingenbergstraße 26

D-32758 Detmold

Germany

www.weidmueller.com

## Accessories

## Mounting kit for wall mounting (BasicLine series B)



Mounting kit for wall mounting (BasicLine series B):  
Mounting kit for alternative wall-mounting of DIN rail-based (top-hat type) Industrial Ethernet BasicLine B series components.

IE-WALLMOUNT-KIT-MODEL-A for use with:

- Industrial Ethernet Switches of the product range IE-SW- BLB05/BLB08/BLB10

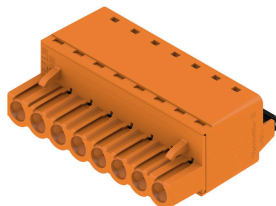
IE-WALLMOUNT-KIT-MODEL-B for use with:

- Industrial Ethernet Switches of the product ranges IE-SW- BLB16/BLB18/BLB24

## General ordering data

| Type       | IE-WALLMOUNT-KIT-MODEL-A   | Version               |
|------------|----------------------------|-----------------------|
| Order No.  | <a href="#">3032760000</a> | Kit for wall mounting |
| GTIN (EAN) | 4099986984516              |                       |
| Qty.       | 1 ST                       |                       |

## BLF 5.08HC/180 SN



Just as reliable as the millionfold proven original and featuring innovative details:

The BLF 5.08HC PUSH IN version of the BLZP 5.08HC female connector is not only different in terms of connection system; it also has a more compact design. Weidmüller's innovative PUSH IN spring connection system stands for the future of easy and tool-free wire connection. HC = High Current.

In terms of versatility, the BLF 5.08HC offers just as much as the version which served as a model:

- 3 tested-and-proven wire outlet directions provide the usual flexibility for application-specific design
- 4 flange variations and the patented release latch allow the locking concept to be based on the requirements of the user
- Use the BLF 5.08HC and SL 5.08HC plug combination to reach the max. rated specifications

## General ordering data

| Type       | BLF 5.08HC/04/180 SN BK... | Version   |
|------------|----------------------------|---|
| Order No.  | <a href="#">1013450000</a> | PCB plug-in connector, female plug, 5.08 mm, Number of poles: 4,  |
| GTIN (EAN) | 4032248721603              | 180°, PUSH IN with actuator, Clamping range, max. : 3.31 mm², Box |
| Qty.       | 90 ST                      |   |