

## IE-SW-BLB-05-5GT-C

Weidmüller Interface GmbH &amp; Co. KG

Klingenbergstraße 26

D-32758 Detmold

Germany

www.weidmueller.com



## Features of BasicLine Series B Switches

- Support real time communication e.g. in PROFINET networks due to the "Quality of Service" and "LLDP frame blocking" functionality – "PROFINET Conformance Class A"
- Large number of certifications to fit any requirements of mechanical and EMC influences, ideal for application areas such as offshore, process or mining
- Optimized DIN-rail clip as well as PUSH IN Connectors for fast and easy installation
- Covers the most common port combinations with RJ45 and SFP ports for flexible usage
- AC/DC power supply input
- Network availability is strongly increased thanks to Broadcast Storm Protection
- Energy Efficient Ethernet and plastic- free packaging

## General ordering data

Version	Network switch, unmanaged, Gigabit Ethernet, Number of ports: 5x RJ45, IP30, -40 °C...75 °C, Conformal coating
Order No.	<a href="#">2908100000</a>
Type	IE-SW-BLB-05-5GT-C
GTIN (EAN)	4099986848153
Qty.	1 items

## IE-SW-BLB-05-5GT-C

**Weidmüller Interface GmbH & Co. KG**  
 Klingenbergstraße 26  
 D-32758 Detmold  
 Germany

www.weidmueller.com

## Technical data

### Approvals

Approvals



ROHS	Conform
UL File Number Search	<a href="#">UL Website</a>
Certificate no. (cULus)	E141197
Certificate no. (cULusEX)	E223527

### Dimensions and weights

Depth	70 mm	Depth (inches)	2.7559 inch
Height	114 mm	Height (inches)	4.4882 inch
Width	26 mm	Width (inches)	1.0236 inch
Net weight	272 g		

### Temperatures

Storage temperature	-40 °C...85 °C	Operating temperature	-40 °C...75 °C
Humidity	5 to 95 % (non-condensing)		

### Environmental Product Compliance

RoHS Compliance Status	Compliant with exemption
RoHS Exemption (if applicable/known)	7a, 7cl
REACH SVHC	Lead 7439-92-1, Lead monoxide 1317-36-8
SCIP	aa4e94ed-b5d0-4245-91e3-1adf29647214

### EMC conformity and approvals

Explosive risk zone	EN IEC 60079-0, EN IEC 60079-7, UL/cUL, Class I, Division 2, Groups A, B, C and D, ATEX Zone 2 Ex ec IIC T4 Gc	Free fall	According to IEC 60068-2-31
EMC standards	EN IEC 61000-6-2, EN IEC 61000-6-4, FCC Part 15 Subpart B Class A, IEC 61000-4-2 ESD: Contact: 6 kV; Air: 8 kV, IEC 61000-4-3 RS: 80 MHz to 1 Ghz: 10 V/m, IEC 61000-4-3 RS: 1.4 GHz to 6 Ghz: 3 V/m, IEC 61000-4-4 EFT: Power: 4 kV; Signal: 2 kV, IEC 61000-4-5 Surge: Power: 2 kV; Signal: 2 kV, IEC 61000-4-6 CS: 10 Vrms, IEC 61000-4-8 PFMF: 30 A/m	Maritime approval	DNV, LR, RINA

## IE-SW-BLB-05-5GT-C

**Weidmüller Interface GmbH & Co. KG**  
 Klingenbergstraße 26  
 D-32758 Detmold  
 Germany

www.weidmueller.com

## Technical data

Vibration	according to IEC 60068-2-6	Shock	according to IEC 60068-2-27
Safety standard	UL 61010-1, UL 61010-2-201		

### Environmental conditions

Operating temperature, max.	75 °C		
Operating temperature, min.	-40 °C		
Humidity	5 to 95 % (non-condensing)		
Storage temperature, max.	85 °C		
Storage temperature, min.	-40 °C		
Operating altitude	Altitude, max.	2000 m	
	Note	in acc. with UL	
	Altitude, max.	6000 m	
	Note	for restrictions, see the manufacturer's declaration for operating altitude in section downloads	

### Guarantee

Time interval	5 years
---------------	---------

### Interfaces

RJ45 ports	10/100/1000BaseT(X), auto negotiation, Full-/half-duplex mode, Auto MDI/MDI-X port	Function DIP switch	QoS (on/off), Broadcast storm protection enable/disable, MAC frame filtering (on/off), Activate/deactivate IEEE 802.3az energy-efficient Ethernet
Number of ports	5x RJ45	LED indicator	Power LED: PWR1, PWR2, Port LED: LNK/ACT, 10/100/1000M (RJ45 port), Power LED: PWR FLT

### MTBF

MTBF	According to Standard	Telcordia SR-332
	Operating time (hours), min.	1404396 h
	Input voltage	24 V

### Management features

Network traffic filter	Quality of Service (QoS), Class of Service (CoS), Type of Service (ToS), Differentiated Services Code Point (DSCP), MAC frame filtering (LLDP frame blocking)	Industrial protocol support	PROFINET device acc. to conformance class A
------------------------	---	-----------------------------	---

### Power supply

Reverse polarity protection	Yes		
Current consumption	0.1 A		
Supply voltage	12/24/48 V DC, 24 V AC, 2 redundant inputs		
Overload current protection	Yes		
Connection type	1 removable 4-pin terminal block		
Voltage supply range	Voltage type	DC	
	Voltage, min.	9 V	

## IE-SW-BLB-05-5GT-C

Weidmüller Interface GmbH &amp; Co. KG

Klingenbergstraße 26

D-32758 Detmold

Germany

www.weidmueller.com

## Technical data

Current consumption	Voltage, max.	60 V
	Voltage type	AC
	Voltage, min.	18 V
	Voltage, max.	30 V
	Voltage	24 V
	Current	0.1 A
	Voltage type	DC

## Switch characteristics

Priority queues	4	MAC table size	2 K
Packet buffer size	1 Mbit	Bandwidth backplane	10 Gbit/s
Jumbo frame support	up to 9 KB		

## Technical data

Housing main material	Metal	Type of mounting	DIN rail
Protection degree	IP30	Surface protection PCB	Conformal coating
Speed	Gigabit Ethernet	Switch	unmanaged

## Technology

Data switching	Store and Forward	Flow control	IEEE 802.3x flow control
Standard	IEEE 802.3 for 10BASE-T, IEEE 802.3u for 100BASE-TX, IEEE 802.3ab for 1000BASE-T, IEEE 802.3x for flow control, IEEE 802.3az Energy-Efficient Ethernet, IEEE 802.1p for Class of Service / Quality of Service (CoS/QoS)		

## Classifications

ETIM 8.0	EC000734	ETIM 9.0	EC000734
ETIM 10.0	EC000734	ECLASS 14.0	19-17-04-02
ECLASS 15.0	19-17-04-02		

## IE-SW-BLB-05-5GT-C

**Weidmüller Interface GmbH & Co. KG**  
 Klingenbergstraße 26  
 D-32758 Detmold  
 Germany

www.weidmueller.com

## Accessories

### Mounting kit for 19" rack assembly

- For assembling DIN rail-based devices on 19" racks



#### General ordering data

Type	RM-KIT	Version	
Order No.	<a href="#">1241440000</a>	Kit for 19"-rack mounting	
GTIN (EAN)	4050118029154		
Qty.	1 ST		

### Mounting kit for wall mounting (BasicLine series B)



Mounting kit for wall mounting (BasicLine series B):  
 Mounting kit for alternative wall-mounting of DIN rail-based (top-hat type) Industrial Ethernet BasicLine B series components.

IE-WALLMOUNT-KIT-MODEL-A for use with:

- Industrial Ethernet Switches of the product range IE-SW- BLB05/BLB08/BLB10

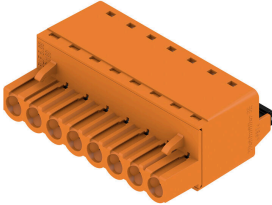
IE-WALLMOUNT-KIT-MODEL-B for use with:

- Industrial Ethernet Switches of the product ranges IE-SW- BLB16/BLB18/BLB24

#### General ordering data

Type	IE-WALLMOUNT-KIT-MODEL-A	Version	
Order No.	<a href="#">3032760000</a>	Kit for wall mounting	
GTIN (EAN)	4099986984516		
Qty.	1 ST		

## BLF 5.08HC/180 SN



Just as reliable as the millionfold proven original and featuring innovative details:

The BLF 5.08HC PUSH IN version of the BLZP 5.08HC female connector is not only different in terms of connection system; it also has a more compact design. Weidmüller's innovative PUSH IN spring connection system stands for the future of easy and tool-free wire connection. HC = High Current.

In terms of versatility, the BLF 5.08HC offers just as much as the version which served as a model:

- 3 tested-and-proven wire outlet directions provide the usual flexibility for application-specific design
- 4 flange variations and the patented release latch allow the locking concept to be based on the requirements of the user
- Use the BLF 5.08HC and SL 5.08HC plug combination to reach the max. rated specifications

## General ordering data

Type	BLF 5.08HC/04/180 SN BK...	Version
Order No.	<a href="#">1013450000</a>	PCB plug-in connector, female plug, 5.08 mm, Number of poles: 4,
GTIN (EAN)	4032248721603	180°, PUSH IN with actuator, Clamping range, max. : 3.31 mm², Box
Qty.	90 ST	