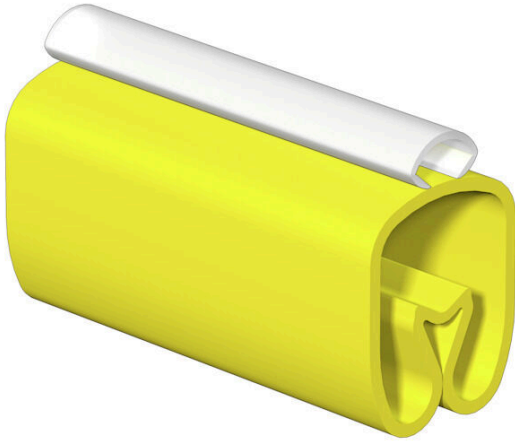


VT-TM 3/30 HF-V0

Weidmüller Interface GmbH & Co. KG
Klingenbergstraße 26
D-32758 Detmold
Germany

www.weidmueller.com



General ordering data

| | |
|------------|--|
| Version | , Socket x 5.3 mm, TPU, Colour: yellow, Transparent, Conductor O.D.: 8 - 16 mm |
| Order No. | 2902820000 |
| Type | VT-TM 3/30 HF-V0 |
| GTIN (EAN) | 4099986005372 |
| Qty. | 50 items |

VT-TM 3/30 HF-V0

Weidmüller Interface GmbH & Co. KG
 Klingenbergstraße 26
 D-32758 Detmold
 Germany

www.weidmueller.com

Technical data

Approvals

| | |
|------|---------|
| ROHS | Conform |
|------|---------|

Dimensions and weights

| | | | |
|------------|--------|-----------------|-------------|
| Height | 30 mm | Height (inches) | 1.1811 inch |
| Width | 5.3 mm | Width (inches) | 0.2087 inch |
| Net weight | 1.71 g | | |

Temperatures

| | |
|-----------------------------|-------------|
| Operating temperature range | -30...90 °C |
|-----------------------------|-------------|

Environmental Product Compliance

| | |
|------------------------|-----------------------------|
| RoHS Compliance Status | Compliant without exemption |
| REACH SVHC | No SVHC above 0.1 wt% |

General data

| | | | |
|-----------------------------------|-------------|-----------------------------------|---------------------------|
| Type of printing | neutral | Width | 5.3 mm |
| UL 94 flammability rating | V-0 | Operating temperature range, max. | 90 °C |
| Operating temperature range, min. | -30 °C | Colour | yellow, Transparent |
| Halogen | No | Basic material | TPU |
| Printed characters | without | Recommended industries | Transportation, Machinery |
| Operating temperature range | -30...90 °C | | |

Conductor and cable markers

| | | | |
|----------------------------------|-------------------------|-------------------------------|-------------------|
| Halogen | No | Conductor cross-section, max. | 6 mm ² |
| Conductor cross-section, min. | 2.5 mm ² | Conductor O.D., max. | 16 mm |
| Conductor O.D., min. | 8 mm | Conductor O.D. | 8 - 16 mm |
| Cross-section for connected wire | 2.5 - 6 mm ² | | |

Classifications

| | | | |
|-------------|-------------|-------------|-------------|
| ETIM 8.0 | EC001530 | ETIM 9.0 | EC001530 |
| ETIM 10.0 | EC001530 | ECLASS 14.0 | 27-28-11-02 |
| ECLASS 15.0 | 27-28-11-02 | | |

VT-TM 3/30 HF-V0

Weidmüller Interface GmbH & Co. KG

Klingenbergstraße 26

D-32758 Detmold

Germany

www.weidmueller.com

Accessories

Blank



TM-I is an acknowledged and accredited marker type for traffic engineering applications. There are various different tag lengths available for individual labelling with long character strings. Easy handling of separation and installation thanks to the project marker field. Pre-attachment of sleeves and retrofitting of tags offer excellent versatility

The special contour of TM-I allows easy assembly and secures firm positioning. They are compatible with a number of commercially available sleeves. Thanks to the MultiCard format, the tags can be printed quickly and conveniently with the PrintJet CONNECT, plotter or the STI pen.

- Easy handling of separation and installation thanks to the project marker field.
- Acknowledged and accredited marker for traffic engineering applications
- Pre-attachment of sleeves and retrofitting of tags offer excellent versatility
- Not suited for labelling with P-Ink or STI pen in connection with CLI T sleeves

For custom printing: Please send us a file of our labeling software M-Print PRO or M-Print PRO Online (without installation) for your labeling specifications.

General ordering data

| | | |
|------------|----------------------------|--|
| Type | TM-I 30 MC NE WS | Version |
| Order No. | 1876390000 | TM-I, Insert markers, 1.3 - 35 mm, 30 x 4 mm, white |
| GTIN (EAN) | 4032248466450 | |
| Qty. | 300 ST | |
| Type | TM-I 30 MC NE GE | Version |
| Order No. | 1876370000 | TM-I, Insert markers, 1.3 - 35 mm, 30 x 4 mm, yellow |
| GTIN (EAN) | 4032248466443 | |
| Qty. | 300 ST | |
| Type | TM-I 30 MC NE RT | Version |
| Order No. | 1876380000 | TM-I, Insert markers, 1.3 - 35 mm, 30 x 4 mm, red |
| GTIN (EAN) | 4032248466474 | |
| Qty. | 300 ST | |
| Type | TM-I 30 MC NE BL | Version |
| Order No. | 1876400000 | TM-I, Insert markers, 1.3 - 35 mm, 30 x 4 mm, blue |
| GTIN (EAN) | 4032248466467 | |
| Qty. | 300 ST | |
| Type | TM-I 30 MC NE GN | Version |
| Order No. | 1365610000 | TM-I, Insert markers, 1.7 - 79 mm, 30 x 4 mm, green |
| GTIN (EAN) | 4050118171907 | |
| Qty. | 300 ST | |

VT-TM 3/30 HF-V0

Weidmüller Interface GmbH & Co. KG
 Klingenbergstraße 26
 D-32758 Detmold
 Germany

Accessories

www.weidmueller.com

TM-I 30



Process reliability: TM-I

TM-I inlay tags have a guide tab which allows them to slide easily into the transparent sleeves from the type TM. Once the tag is in place, the tab is snapped off at the predetermined break point. The ready-assembled sleeves can then be simply pushed over the conductors. Your benefits: large quantities can be efficiently pre-assembled in a single step.

General ordering data

| | | |
|------------|----------------------------|--|
| Type | TM-I 30 MM WS | Version |
| Order No. | 2005530000 | TM-I, Insert markers, 1.3 - 35 mm, 30 x 4 mm, white |
| GTIN (EAN) | 4050118390070 | |
| Qty. | 2000 ST | |
| Type | TM-I 30 MM GE | Version |
| Order No. | 2005700000 | TM-I, Insert markers, 1.3 - 35 mm, 30 x 4 mm, yellow |
| GTIN (EAN) | 4050118390339 | |
| Qty. | 2000 ST | |
| Type | TM-I 30 MM RT | Version |
| Order No. | 2005870000 | TM-I, Insert markers, 1.3 - 35 mm, 30 x 4 mm, red |
| GTIN (EAN) | 4050118390384 | |
| Qty. | 2000 ST | |
| Type | TM-I 30 MM BL | Version |
| Order No. | 2005990000 | TM-I, Insert markers, 1.3 - 35 mm, 30 x 4 mm, blue |
| GTIN (EAN) | 4050118390452 | |
| Qty. | 2000 ST | |