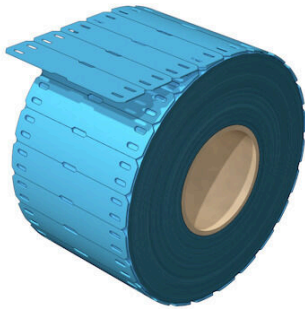


SFX-VT 11/60 MM BL

Weidmüller Interface GmbH & Co. KG
Klingenbergstraße 26
D-32758 Detmold
Germany

www.weidmueller.com

**Highly flexible: SFX**

SFX markers are the preferred choice for labelling cables if you prefer the classic cable tie solution. Cables do not always run in a straight line. The material used in SFX markers addresses this fact with highly flexible polyurethane. The marker follows each curve of the cable and latches on with ease. Your advantages at a glance:
Weathering resistance tested according to ISO DIN EN ISO 4892-2:2013 table 3, procedure A cycle 1 at 5000 hours

Individually labeled with the M-Print® PRO

Easy and fast printing with the THM MultiMark

General ordering data

Version	SlimFix, Conductor and cable markers, 7 - 40 mm, 60 x 13 mm, blue
Order No.	2900970000
Type	SFX-VT 11/60 MM BL
GTIN (EAN)	4099986658042
Qty.	1000 items

SFX-VT 11/60 MM BL

Weidmüller Interface GmbH & Co. KG
 Klingenbergstraße 26
 D-32758 Detmold
 Germany

www.weidmueller.com

Technical data

Approvals

ROHS	Conform
------	---------

Dimensions and weights

Depth	0.6 mm	Depth (inches)	0.0236 inch
Height	60 mm	Height (inches)	2.3622 inch
Width	13 mm	Width (inches)	0.5118 inch
Net weight	0.55 g		

Temperatures

Operating temperature range	-55...105 °C
-----------------------------	--------------

Environmental Product Compliance

RoHS Compliance Status	Compliant without exemption
REACH SVHC	No SVHC above 0.1 wt%

General data

Type of printing	neutral	Version	halogen-free
Width	13 mm	UL 94 flammability rating	HB
Operating temperature range, max.	105 °C	Operating temperature range, min.	-55 °C
Colour	blue	Halogen	No
Basic material	Polyurethane	Printed characters	without
Size of labelling field	10.5 x 44 mm	Operating temperature range	-55...105 °C

Conductor and cable markers

Halogen	No	Conductor cross-section, max.	500 mm ²
Conductor cross-section, min.	16 mm ²	Conductor O.D., max.	40 mm
Conductor O.D., min.	7 mm	Cable tie passage	Flat
Conductor O.D.	7 - 40 mm	Suitable cable tie	Plastic
Cross-section for connected wire	16 - 500 mm ²		

Classifications

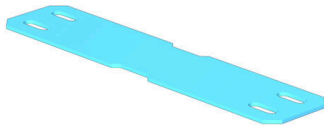
ETIM 8.0	EC001530	ETIM 9.0	EC001530
ETIM 10.0	EC001530	ECLASS 14.0	27-28-11-02
ECLASS 15.0	27-28-11-02		

SFX-VT 11/60 MM BL

Weidmüller Interface GmbH & Co. KG
Klingenbergstraße 26
D-32758 Detmold
Germany

www.weidmueller.com

Drawings



SFX-VT 11/60 MM BL

Weidmüller Interface GmbH & Co. KG
Klingenbergstraße 26
D-32758 Detmold
Germany

www.weidmueller.com

Accessories

Ink ribbons



These printers produce excellent printing results thanks to the thermal transfer technique. Different materials and the user-friendly printing system under Windows optimise marking efforts.

General ordering data

Type	RIBBON MM-HS 60/300 SW	Version	
Order No.	2448880000	Ink ribbon	
GTIN (EAN)	4050118462944		
Qty.	1 ST		