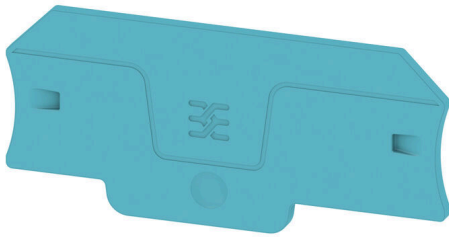


**ALEP DT 4 2C BL****Weidmüller Interface GmbH & Co. KG**

Klingenbergstraße 26

D-32758 Detmold

Germany

[www.weidmueller.com](http://www.weidmueller.com)

Partition plates and end plates are essential accessories for terminal blocks. Partition plates provide optical and electrical separation of different potentials and functional groups, increasing safety and ensuring a clear structure inside the control cabinet. End plates close the terminal block row on the sides, protect against contact with live parts, and ensure a clean, stable finish. Both components are precisely matched to the respective Weidmüller terminal block series, contributing to safe, compliant, and professional wiring.

**General ordering data**

Version	End plate for terminals, blue, Height: 71.6 mm, Width: 2 mm, V-0, Wemid, Snap-on: No
Order No.	<a href="#">2898900000</a>
Type	ALEP DT 4 2C BL
GTIN (EAN)	4064675904502
Qty.	20 items

**ALEP DT 4 2C BL**

**Weidmüller Interface GmbH & Co. KG**  
 Klingenbergstraße 26  
 D-32758 Detmold  
 Germany

www.weidmueller.com

**Technical data**

**Approvals**

ROHS Conform

**Dimensions and weights**

Depth	32.4 mm	Depth (inches)	1.2756 inch
Height	71.6 mm	Height (inches)	2.8189 inch
Width	2 mm	Width (inches)	0.0787 inch
Net weight	2.24 g		

**Temperatures**

Continuous operating temp., min. -60 °C Continuous operating temp., max. 130 °C

**Environmental Product Compliance**

RoHS Compliance Status	Compliant without exemption		
REACH SVHC	No SVHC above 0.1 wt%		
Product Carbon Footprint	Cradle to gate	0.022 kg CO2 eq.	

**Material data**

Basic material	Wemid	Colour	blue
UL 94 flammability rating	V-0		

**Additional technical data**

Snap-on No

**Classifications**

ETIM 8.0	EC000886	ETIM 9.0	EC000886
ETIM 10.0	EC000886	ECLASS 14.0	27-25-03-01
ECLASS 15.0	27-25-03-01		