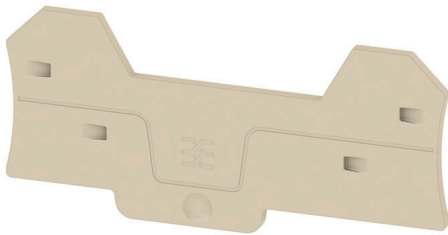


ALEP DT 2.5 4C**Weidmüller Interface GmbH & Co. KG**

Klingenbergstraße 26

D-32758 Detmold

Germany

www.weidmueller.com

Partition plates and end plates are essential accessories for terminal blocks. Partition plates provide optical and electrical separation of different potentials and functional groups, increasing safety and ensuring a clear structure inside the control cabinet. End plates close the terminal block row on the sides, protect against contact with live parts, and ensure a clean, stable finish. Both components are precisely matched to the respective Weidmüller terminal block series, contributing to safe, compliant, and professional wiring.

General ordering data

Version	End plate for terminals, dark beige, Height: 88.9 mm, Width: 2 mm, V-0, Wemid, Snap-on: No
Order No.	2898870000
Type	ALEP DT 2.5 4C
GTIN (EAN)	4064675904472
Qty.	20 items

ALEP DT 2.5 4C

Weidmüller Interface GmbH & Co. KG
 Klingenbergstraße 26
 D-32758 Detmold
 Germany

www.weidmueller.com

Technical data

Approvals

ROHS Conform

Dimensions and weights

Depth	40.5 mm	Depth (inches)	1.5945 inch
Height	88.9 mm	Height (inches)	3.5 inch
Width	2 mm	Width (inches)	0.0787 inch
Net weight	3.13 g		

Temperatures

Continuous operating temp., min. -60 °C Continuous operating temp., max. 130 °C

Environmental Product Compliance

RoHS Compliance Status	Compliant without exemption		
REACH SVHC	No SVHC above 0.1 wt%		
Product Carbon Footprint	Cradle to gate	0.031 kg CO2 eq.	

Material data

Basic material	Wemid	Colour	dark beige
UL 94 flammability rating	V-0		

Additional technical data

Snap-on No

Classifications

ETIM 8.0	EC000886	ETIM 9.0	EC000886
ETIM 10.0	EC000886	ECLASS 14.0	27-25-03-01
ECLASS 15.0	27-25-03-01		