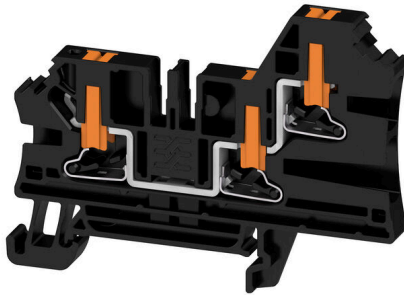


**AL3C 4 BK****Weidmüller Interface GmbH & Co. KG**

Klingenbergstraße 26

D-32758 Detmold

Germany

[www.weidmueller.com](http://www.weidmueller.com)

To feed through power, signal, and data is the classical requirement in electrical engineering and panel building. The insulating material, the connection system and the design of the terminal blocks are the differentiating features. A feed-through terminal block is suitable for joining and/or connecting one or more conductors. They could have one or more connection levels that are on the same potential or insulated against one another.

**General ordering data**

|            |   |
|------------|---|
| Version    | Feed-through terminal block, PUSH IN, black, 4 mm <sup>2</sup> , 32 A, 1000 V, Number of connections: 3 |
| Order No.  | <a href="#">2872050000</a>  |
| Type       | AL3C 4 BK   |
| GTIN (EAN) | 4064675640172   |
| Qty.       | 50 items  |

## AL3C 4 BK

Weidmüller Interface GmbH & Co. KG  
Klingenbergstraße 26  
D-32758 Detmold  
Germany

www.weidmueller.com

## Technical data

## Approvals

Approvals



|                         |                            |
|-------------------------|----------------------------|
| ROHS                    | Conform                    |
| UL File Number Search   | <a href="#">UL Website</a> |
| Certificate No. (cURus) | E60693                     |

## Dimensions and weights

|            |         |                 |             |
|------------|---------|-----------------|-------------|
| Depth      | 52.5 mm | Depth (inches)  | 2.0669 inch |
| Height     | 71.5 mm | Height (inches) | 2.815 inch  |
| Width      | 6.1 mm  | Width (inches)  | 0.2402 inch |
| Net weight | 11.37 g |                 |             |

## Temperatures

|                                  |                |                                  |        |
|----------------------------------|----------------|----------------------------------|--------|
| Storage temperature              | -25 °C...55 °C | Continuous operating temp., min. | -60 °C |
| Continuous operating temp., max. | 130 °C         |                                  |        |

## Environmental Product Compliance

|                        |                             |
|------------------------|-----------------------------|
| RoHS Compliance Status | Compliant without exemption |
| REACH SVHC             | No SVHC above 0.1 wt%       |

## Material data

|                                |        |                           |       |
|--------------------------------|--------|---------------------------|-------|
| Basic material                 | Wemid  | Colour                    | black |
| Colour of operational elements | orange | UL 94 flammability rating | V-0   |

## Rating data IECEx/ATEX

|                                |                   |                                 |                   |
|--------------------------------|-------------------|---------------------------------|-------------------|
| Certificate No. (ATEX)         | .                 | Certificate No. (IECEX)         | .                 |
| Max. voltage (ATEX)            | 550 V             | Current (ATEX)                  | 28 A              |
| Wire cross section max. (ATEX) | 6 mm <sup>2</sup> | Max. voltage (IECEX)            | 550 V             |
| Current (IECEX)                | 28 A              | Wire cross section max. (IECEX) | 6 mm <sup>2</sup> |

## System specifications

|                               |       |                                     |    |
|-------------------------------|-------|-------------------------------------|----|
| End cover plate required      | Yes   | Number of potentials                | 1  |
| Number of levels              | 1     | Number of clamping points per level | 3  |
| Number of potentials per tier | 1     | Levels cross-connected internally   | No |
| Mounting rail                 | TS 35 | N-function                          | No |
| PE function                   | No    | PEN function                        | No |

## Additional technical data

|                  |         |                          |     |
|------------------|---------|--------------------------|-----|
| Open sides       | right   | Snap-on                  | Yes |
| Type of fixing   | Snap-on | Explosion-tested version | No  |
| Type of mounting | TS 35   |                          |     |

## AL3C 4 BK

Weidmüller Interface GmbH &amp; Co. KG

Klingenbergstraße 26

D-32758 Detmold

Germany

www.weidmueller.com

## Technical data

## CSA rating data

|                               |        |                       |                 |
|-------------------------------|--------|-----------------------|-----------------|
| Wire cross section max. (CSA) | 10 AWG | Voltage size C (CSA)  | 600 V           |
| Current size C (CSA)          | 30 A   | Certificate No. (CSA) | 227442-80177078 |
| Voltage size B (CSA)          | 600 V  | Current size B (CSA)  | 30 A            |
| Voltage size D (CSA)          | 600 V  | Current size D (CSA)  | 5 A             |
| Wire cross section min. (CSA) | 24 AWG |                       |                 |

## Conductors for clamping (additional connection)

Connection type, additional connection PUSH IN

## Conductors for clamping (rated connection)

|   |                      |   |                      |
|---|----------------------|---|----------------------|
| Gauge to IEC 60947-1  | A4                   | Wire connection cross section AWG, max.   | AWG 12               |
| Connection direction  | on side              | Stripping length  | 12 mm                |
| Type of connection  | PUSH IN              | Number of connections   | 3                    |
| Clamping range, max.  | 6 mm <sup>2</sup>    | Clamping range, min.  | 0.14 mm <sup>2</sup> |
| Blade size  | 0.6 x 3.5 mm         | Wire connection cross section AWG, min.   | AWG 26               |
| Wire connection cross-section, finely stranded with wire-end ferrules DIN 46228/4, max. | 4 mm <sup>2</sup>    | Wire connection cross-section, finely stranded with wire-end ferrules DIN 46228/4, min. | 0.14 mm <sup>2</sup> |
| Wire connection cross-section, finely stranded with wire-end ferrules DIN 46228/1, max. | 4 mm <sup>2</sup>    | Wire connection cross-section, finely stranded with wire-end ferrules DIN 46228/1, min. | 0.14 mm <sup>2</sup> |
| Wire connection cross section, finely stranded, max.                                    | 6 mm <sup>2</sup>    | Wire connection cross section, finely stranded, min.                                    | 0.14 mm <sup>2</sup> |
| Connection cross-section, stranded, max.  | 4 mm <sup>2</sup>    | Connection cross-section, stranded, min.  | 0.14 mm <sup>2</sup> |
| Twin wire-end ferrules, max.  | 1.5 mm <sup>2</sup>  | Twin wire-end ferrules, min.  | 0.5 mm <sup>2</sup>  |
| Wire connection cross-section, solid core, max.   | 6 mm <sup>2</sup>    | Wire connection cross-section, solid core, min.   | 0.14 mm <sup>2</sup> |
| Connection cross-section, finely stranded, min.   | 0.14 mm <sup>2</sup> |   |                      |

## General

|   |               |   |        |
|---|---------------|---|--------|
| Wire connection cross section AWG, max. | AWG 12        | Wire connection cross section AWG, min. | AWG 26 |
| Standards                               | IEC 60947-7-1 | Mounting rail                           | TS 35  |

## Rating data

|  |                   |                                 |               |
|--|-------------------|---------------------------------|---------------|
| Rated cross-section                          | 4 mm <sup>2</sup> | Rated voltage                   | 1000 V        |
| Rated DC voltage                             | 1000 V            | Nominal current                 | 32 A          |
| Current at maximum wires                     | 32 A              | Standards                       | IEC 60947-7-1 |
| Volume resistance according to IEC 60947-7-x | 1 mΩ              | Rated impulse withstand voltage | 8 kV          |
| Power loss in accordance with IEC 60947-7-x  | 1.02 W            | Surge voltage category          | III           |
| Pollution severity                           | 3                 |                                 |               |

## UL rating data

|  |        |  |        |
|--|--------|--|--------|
| Conductor size Factory wiring max. (cURus) | 10 AWG | Certificate No. (cURus)                    | E60693 |
| Conductor size Field wiring min. (cURus)   | 24 AWG | Conductor size Factory wiring min. (cURus) | 24 AWG |

## AL3C 4 BK

## Technical data

Conductor size Field wiring max. (cURus) 10 AWG

### Classifications

|             |             |             |             |
|-------------|-------------|-------------|-------------|
| ETIM 8.0    | EC000897    | ETIM 9.0    | EC000897    |
| ETIM 10.0   | EC000897    | ECLASS 14.0 | 27-25-01-01 |
| ECLASS 15.0 | 27-25-01-01 |             |             |

**Drawings**

**Connection diagram**

