

ALEP 4C 4 BL

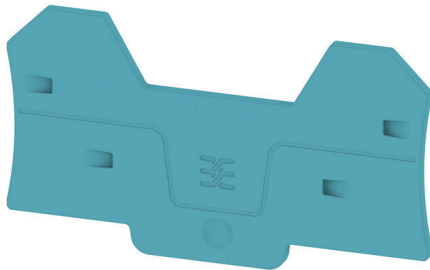
Weidmüller Interface GmbH & Co. KG

Klingenbergstraße 26

D-32758 Detmold

Germany

www.weidmueller.com



Partition plates and end plates are essential accessories for terminal blocks. Partition plates provide optical and electrical separation of different potentials and functional groups, increasing safety and ensuring a clear structure inside the control cabinet. End plates close the terminal block row on the sides, protect against contact with live parts, and ensure a clean, stable finish. Both components are precisely matched to the respective Weidmüller terminal block series, contributing to safe, compliant, and professional wiring.

General ordering data

Version	End plate for terminals, blue, Height: 81.3 mm, Width: 2.1 mm, V-0, Wemid, Snap-on: No
Order No.	2871860000
Type	ALEP 4C 4 BL
GTIN (EAN)	4064675639985
Qty.	20 items

ALEP 4C 4 BL

Weidmüller Interface GmbH & Co. KG
 Klingenbergstraße 26
 D-32758 Detmold
 Germany

www.weidmueller.com

Technical data

Approvals

ROHS Conform

Dimensions and weights

Depth	45.3 mm	Depth (inches)	1.7835 inch
Height	81.3 mm	Height (inches)	3.2008 inch
Width	2.1 mm	Width (inches)	0.0827 inch
Net weight	3.06 g		

Temperatures

Continuous operating temp., min. -60 °C Continuous operating temp., max. 130 °C

Environmental Product Compliance

RoHS Compliance Status	Compliant without exemption		
REACH SVHC	No SVHC above 0.1 wt%		
Product Carbon Footprint	Cradle to gate	0.030 kg CO2 eq.	

Material data

Basic material	Wemid	Colour	blue
UL 94 flammability rating	V-0		

Additional technical data

Snap-on No

Classifications

ETIM 8.0	EC000886	ETIM 9.0	EC000886
ETIM 10.0	EC000886	ECLASS 14.0	27-25-03-01
ECLASS 15.0	27-25-03-01		