

ALEP 3C 2.5 BL

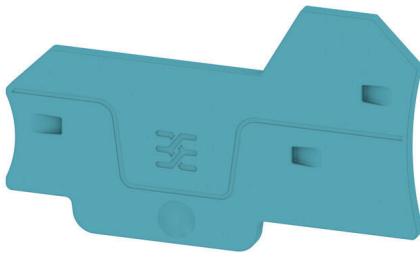
Weidmüller Interface GmbH & Co. KG

Klingenbergstraße 26

D-32758 Detmold

Germany

www.weidmueller.com



Partition plates and end plates are essential accessories for terminal blocks. Partition plates provide optical and electrical separation of different potentials and functional groups, increasing safety and ensuring a clear structure inside the control cabinet. End plates close the terminal block row on the sides, protect against contact with live parts, and ensure a clean, stable finish. Both components are precisely matched to the respective Weidmüller terminal block series, contributing to safe, compliant, and professional wiring.

General ordering data

| | |
|------------|---|
| Version | End plate for terminals, blue, Height: 66.3 mm, Width: 2.1 mm, V-0, Wemid, Snap-on: Yes |
| Order No. | 2871780000 |
| Type | ALEP 3C 2.5 BL |
| GTIN (EAN) | 4064675639909 |
| Qty. | 20 items |

ALEP 3C 2.5 BL

Weidmüller Interface GmbH & Co. KG
 Klingenbergstraße 26
 D-32758 Detmold
 Germany

www.weidmueller.com

Technical data

Approvals

| | |
|------|---------|
| ROHS | Conform |
|------|---------|

Dimensions and weights

| | | | |
|------------|---------|-----------------|-------------|
| Depth | 40.5 mm | Depth (inches) | 1.5945 inch |
| Height | 66.3 mm | Height (inches) | 2.6102 inch |
| Width | 2.1 mm | Width (inches) | 0.0827 inch |
| Net weight | 2.42 g | | |

Temperatures

| | | | |
|----------------------------------|--------|----------------------------------|--------|
| Continuous operating temp., min. | -60 °C | Continuous operating temp., max. | 130 °C |
|----------------------------------|--------|----------------------------------|--------|

Environmental Product Compliance

| | | | |
|--------------------------|-----------------------------|------------------|--|
| RoHS Compliance Status | Compliant without exemption | | |
| REACH SVHC | No SVHC above 0.1 wt% | | |
| Product Carbon Footprint | Cradle to gate | 0.024 kg CO2 eq. | |

Material data

| | | | |
|---------------------------|-------|--------|------|
| Basic material | Wemid | Colour | blue |
| UL 94 flammability rating | V-0 | | |

Additional technical data

| | |
|---------|-----|
| Snap-on | Yes |
|---------|-----|

Classifications

| | | | |
|-------------|-------------|-------------|-------------|
| ETIM 8.0 | EC000886 | ETIM 9.0 | EC000886 |
| ETIM 10.0 | EC000886 | ECLASS 14.0 | 27-25-03-01 |
| ECLASS 15.0 | 27-25-03-01 | | |