

## ALEP 3C 2.5 BL

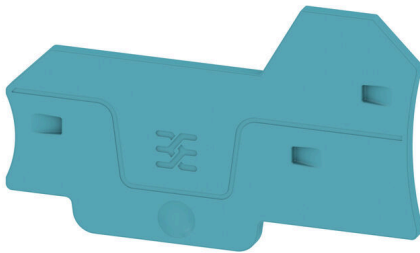
**Weidmüller Interface GmbH & Co. KG**

Klingenbergstraße 26

D-32758 Detmold

Germany

[www.weidmueller.com](http://www.weidmueller.com)



Partition plates and end plates are essential accessories for terminal blocks. Partition plates provide optical and electrical separation of different potentials and functional groups, increasing safety and ensuring a clear structure inside the control cabinet. End plates close the terminal block row on the sides, protect against contact with live parts, and ensure a clean, stable finish. Both components are precisely matched to the respective Weidmüller terminal block series, contributing to safe, compliant, and professional wiring.

### General ordering data

Version	End plate for terminals, blue, Height: 66.3 mm, Width: 2.1 mm, V-0, Wemid, Snap-on: Yes
Order No.	<a href="#">2871780000</a>
Type	ALEP 3C 2.5 BL
GTIN (EAN)	4064675639909
Qty.	20 items

**ALEP 3C 2.5 BL**

**Weidmüller Interface GmbH & Co. KG**  
 Klingenbergstraße 26  
 D-32758 Detmold  
 Germany

www.weidmueller.com

**Technical data**

**Approvals**

ROHS Conform

**Dimensions and weights**

Depth	40.5 mm	Depth (inches)	1.5945 inch
Height	66.3 mm	Height (inches)	2.6102 inch
Width	2.1 mm	Width (inches)	0.0827 inch
Net weight	2.42 g		

**Temperatures**

Continuous operating temp., min. -60 °C Continuous operating temp., max. 130 °C

**Environmental Product Compliance**

RoHS Compliance Status	Compliant without exemption		
REACH SVHC	No SVHC above 0.1 wt%		
Product Carbon Footprint	Cradle to gate	0.024 kg CO2 eq.	

**Material data**

Basic material	Wemid	Colour	blue
UL 94 flammability rating	V-0		

**Additional technical data**

Snap-on Yes

**Classifications**

ETIM 8.0	EC000886	ETIM 9.0	EC000886
ETIM 10.0	EC000886	ECLASS 14.0	27-25-03-01
ECLASS 15.0	27-25-03-01		