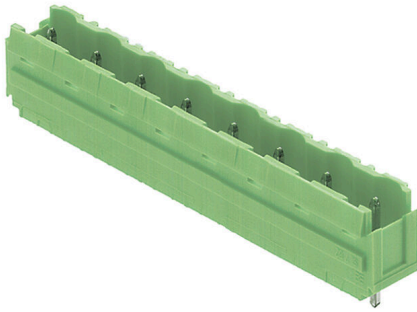


**SL 7.62/12/180B 3.2SN GN BX**

**Weidmüller Interface GmbH & Co. KG**  
Klingenbergstraße 26  
D-32758 Detmold  
Germany

www.weidmueller.com



Male connectors with straight outlet direction. The solder pin length is optimised for wave flow soldering. The pin headers provide space for labelling and can be coded.

**General ordering data**

Order No.	2865300000
Type	<a href="#">SL 7.62/12/180B 3.2SN GN BX</a>
GTIN (EAN)	4064675600794
Qty.	50 items
Packaging	Box

## SL 7.62/12/180B 3.2SN GN BX

**Weidmüller Interface GmbH & Co. KG**  
 Klingenbergstraße 26  
 D-32758 Detmold  
 Germany

www.weidmueller.com

## Technical data

### Approvals

ROHS	Conform
------	---------

### Dimensions and weights

Depth	8.5 mm	Depth (inches)	0.3346 inch
Height	15.2 mm	Height (inches)	0.5984 inch
Width	91.44 mm	Width (inches)	3.6 inch
Net weight	6.12 g		

### Environmental Product Compliance

RoHS Compliance Status	Compliant without exemption		
REACH SVHC	No SVHC above 0.1 wt%		
Product Carbon Footprint	Cradle to gate	0,062 kg CO2 eq.	

### System specifications

Mounting onto the PCB	THT solder connection	Pitch in mm (P)	7.62 mm
Outgoing elbow	180°	Number of poles	12
Solder pin length (l)	3.2 mm	Pin series quantity	1

### Material data

Insulating material	PBT	Colour	Pale green
Colour chart (similar)	RAL 6021	Moisture Level (MSL)	
UL 94 flammability rating	V-0	Contact material	Cu-alloy
Operating temperature, min.	-50 °C	Operating temperature, max.	100 °C

### Rated data acc. to IEC

Rated current, max. number of poles (Tu=20°C)	17 A	Rated current, min. number of poles (Tu=40°C)	16 A
Rated voltage for surge voltage class / pollution degree II/2	800 V	Rated voltage for surge voltage class / pollution degree III/2	630 V
Rated impulse voltage for surge voltage class/ pollution degree II/2	6000 V	Rated impulse voltage for surge voltage class/ pollution degree III/2	6 kV

### Packing

Packaging	Box	VPE length	168.00 mm
VPE width	118.00 mm	VPE height	48.00 mm

### Important note

Notes

### Classifications

ETIM 8.0	EC002637	ETIM 9.0	EC002637
ETIM 10.0	EC002637	ECLASS 14.0	27-46-02-01
ECLASS 15.0	27-46-02-01		

Dimensional drawing

