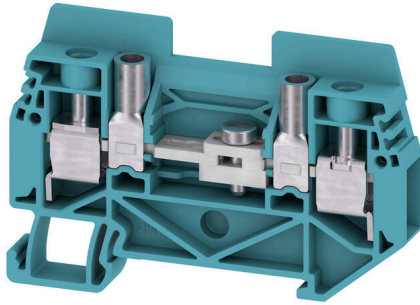


**WTL 6 STB BL****Weidmüller Interface GmbH & Co. KG**

Klingenbergstraße 26

D-32758 Detmold

Germany

[www.weidmueller.com](http://www.weidmueller.com)**Current and voltage transformer wiring**

Our test disconnect terminal blocks featuring spring and screw connection technology allow you to create all the important converter circuits for measuring current, voltage and power in a safe and sophisticated way.

**General ordering data**

|            |   |
|------------|---|
| Version    | Measuring transformer disconnect terminal, Screw connection, 500, 41, 2 |
| Order No.  | <a href="#">2863890000</a>  |
| Type       | WTL 6 STB BL  |
| GTIN (EAN) | 4064675598763   |
| Qty.       | 50 items  |

## WTL 6 STB BL

Weidmüller Interface GmbH &amp; Co. KG

Klingenbergstraße 26

D-32758 Detmold

Germany

www.weidmueller.com

## Technical data

## Approvals

Approvals



ROHS Conform

UL File Number Search [UL Website](#)

Certificate No. (UR) E60693

## Dimensions and weights

|                          |             |                |             |
|--------------------------|-------------|----------------|-------------|
| Depth                    | 46.5 mm     | Depth (inches) | 1.8307 inch |
| Depth including DIN rail | 47.5 mm     | Height         | 69 mm       |
| Height (inches)          | 2.7165 inch | Width          | 7.9 mm      |
| Width (inches)           | 0.311 inch  | Net weight     | 23.14 g     |

## Temperatures

|                                  |                |                                  |        |
|----------------------------------|----------------|----------------------------------|--------|
| Storage temperature              | -25 °C...55 °C | Continuous operating temp., min. | -60 °C |
| Continuous operating temp., max. | 130 °C         |                                  |        |

## Environmental Product Compliance

|                        |                             |
|------------------------|-----------------------------|
| RoHS Compliance Status | Compliant without exemption |
| REACH SVHC             | No SVHC above 0.1 wt%       |

## Material data

|                           |       |        |      |
|---------------------------|-------|--------|------|
| Basic material            | Wemid | Colour | blue |
| UL 94 flammability rating | V-0   |        |      |

## System specifications

|                               |     |                                     |       |
|-------------------------------|-----|-------------------------------------|-------|
| End cover plate required      | Yes | Number of potentials                | 1     |
| Number of levels              | 1   | Number of clamping points per level | 2     |
| Number of potentials per tier | 1   | Mounting rail                       | TS 35 |
| N-function                    | No  | PE function                         | No    |
| PEN function                  | No  |                                     |       |

## Additional technical data

|                  |         |                          |    |
|------------------|---------|--------------------------|----|
| Open sides       | right   | Explosion-tested version | No |
| Type of mounting | Snap-on |                          |    |

## Conductors for clamping (additional connection)

Connection type, additional connection Screw connection

## Conductors for clamping (rated connection)

|                         |                  |   |        |
|-------------------------|------------------|---|--------|
| Gauge to IEC 60947-1    | A5               | Wire connection cross section AWG, max. | AWG 8  |
| Connection direction    | on side          | Tightening torque, max.                 | 1.2 Nm |
| Tightening torque, min. | 0.8 Nm           | Stripping length                        | 12 mm  |
| Type of connection      | Screw connection | Number of connections                   | 2      |

## WTL 6 STB BL

**Weidmüller Interface GmbH & Co. KG**

Klingenbergstraße 26  
D-32758 Detmold  
Germany

www.weidmueller.com

## Technical data

|   |                     |   |                     |
|---|---------------------|---|---------------------|
| Clamping range, max.  | 10 mm <sup>2</sup>  | Clamping range, min.  | 0.5 mm <sup>2</sup> |
| Clamping screw  | M 3.5               | Blade size  | 0.8 x 4.0 mm        |
| Wire connection cross section AWG, min.   | AWG 20              | Wire connection cross-section, finely stranded with wire-end ferrules DIN 46228/4, max. | 6 mm <sup>2</sup>   |
| Wire connection cross-section, finely stranded with wire-end ferrules DIN 46228/4, min. | 0.5 mm <sup>2</sup> | Wire connection cross-section, finely stranded with wire-end ferrules DIN 46228/1, max. | 6 mm <sup>2</sup>   |
| Wire connection cross-section, finely stranded with wire-end ferrules DIN 46228/1, min. | 0.5 mm <sup>2</sup> | Wire connection cross section, finely stranded, max.                                    | 6 mm <sup>2</sup>   |
| Wire connection cross section, finely stranded, min.                                    | 0.5 mm <sup>2</sup> | Connection cross-section, stranded, max.  | 10 mm <sup>2</sup>  |
| Connection cross-section, stranded, min.  | 0.5 mm <sup>2</sup> | Wire connection cross-section, solid core, max.   | 10 mm <sup>2</sup>  |
| Wire connection cross-section, solid core, min.   | 0.5 mm <sup>2</sup> |   |                     |

### General

|   |               |   |        |
|---|---------------|---|--------|
| Wire connection cross section AWG, max. | AWG 8         | Wire connection cross section AWG, min. | AWG 20 |
| Standards                               | IEC 60947-7-1 | Mounting rail                           | TS 35  |

### Rating data

|  |                   |                                 |               |
|--|-------------------|---------------------------------|---------------|
| Rated cross-section                          | 6 mm <sup>2</sup> | Rated voltage                   | 500 V         |
| Rated DC voltage                             | 500 V             | Nominal current                 | 41 A          |
| Current at maximum wires                     | 41 A              | Standards                       | IEC 60947-7-1 |
| Volume resistance according to IEC 60947-7-x | 0.78 mΩ           | Rated impulse withstand voltage | 6 kV          |
| Power loss in accordance with IEC 60947-7-x  | 1.31 W            | Pollution severity              | 3             |

### UL rating data

|   |        |                      |        |
|---|--------|----------------------|--------|
| Voltage size B (UR)                     | 300 V  | Current size B (UR)  | 30 A   |
| Conductor size Factory wiring max. (UR) | 8 AWG  | Current size D (UR)  | 10 A   |
| Current size C (UR)                     | 30 A   | Voltage size C (UR)  | 150 V  |
| Conductor size Factory wiring min. (UR) | 20 AWG | Certificate No. (UR) | E60693 |
| Conductor size Field wiring min. (UR)   | 20 AWG | Voltage size D (UR)  | 300 V  |
| Conductor size Field wiring max. (UR)   | 8 AWG  |                      |        |

### Classifications

|             |             |             |             |
|-------------|-------------|-------------|-------------|
| ETIM 8.0    | EC000902    | ETIM 9.0    | EC000902    |
| ETIM 10.0   | EC000902    | ECLASS 14.0 | 27-25-01-09 |
| ECLASS 15.0 | 27-25-01-09 |             |             |

**Drawings**



## WTL 6 STB BL

Weidmüller Interface GmbH &amp; Co. KG

Klingenbergstraße 26

D-32758 Detmold

Germany

www.weidmueller.com

## Accessories

## Cross-connections



The distribution or multiplication of a potential to adjoining terminal blocks is realized via a cross-connection. Additional wiring effort can be easily avoided. Even if the poles are broken out, contact reliability in the terminal blocks is still ensured. Our portfolio offers pluggable and screwable cross-connection systems for modular terminal blocks.

## General ordering data

|            |                            |   |
|------------|----------------------------|---|
| Type       | SAKQB 6/2                  | Version   |
| Order No.  | <a href="#">2615330000</a> | Cross-connector (terminal), when screwed in, grey, Number of poles: |
| GTIN (EAN) | 4050118655797              | 2, Pitch in mm (P): 8.00, Insulated: No, Width: 6 mm                |
| Qty.       | 20 ST                      |   |
| Type       | SAKQB 6/3                  | Version   |
| Order No.  | <a href="#">2615340000</a> | Cross-connector (terminal), when screwed in, grey, Number of poles: |
| GTIN (EAN) | 4050118655780              | 3, Pitch in mm (P): 8.00, Insulated: No, Width: 6 mm                |
| Qty.       | 20 ST                      |   |

## Accessorie

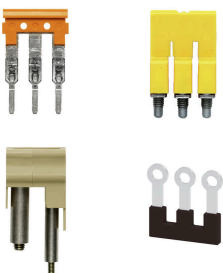


**Current and voltage transformer wiring**  
Our test disconnect terminal blocks featuring spring and screw connection technology allow you to create all the important converter circuits for measuring current, voltage and power in a safe and sophisticated way.

## General ordering data

|            |                            |   |
|------------|----------------------------|---|
| Type       | SAKQB 6/4                  | Version   |
| Order No.  | <a href="#">2615360000</a> | Cross-connector (terminal), when screwed in, grey, Number of poles: |
| GTIN (EAN) | 4050118655858              | 4, Pitch in mm (P): 8.00, Insulated: No, Width: 6 mm                |
| Qty.       | 20 ST                      |   |

## Cross-connections



The distribution or multiplication of a potential to adjoining terminal blocks is realized via a cross-connection. Additional wiring effort can be easily avoided. Even if the poles are broken out, contact reliability in the terminal blocks is still ensured. Our portfolio offers pluggable and screwable cross-connection systems for modular terminal blocks.

## WTL 6 STB BL

**Weidmüller Interface GmbH & Co. KG**  
 Klingenbergstraße 26  
 D-32758 Detmold  
 Germany

www.weidmueller.com

## Accessories

## General ordering data

|            |                            |   |
|------------|----------------------------|---|
| Type       | SAKQB 6/10                 | Version   |
| Order No.  | <a href="#">2111230000</a> | Cross-connector (terminal), when screwed in, grey, Number of poles: |
| GTIN (EAN) | 4050118440607              | 10, Pitch in mm (P): 8.00, Insulated: No, Width: 6 mm               |
| Qty.       | 10 ST                      |   |

## Accessorie



Current and voltage transformer wiring  
 Our test disconnect terminal blocks featuring spring and screw connection technology allow you to create all the important converter circuits for measuring current, voltage and power in a safe and sophisticated way.

## General ordering data

|            |                            |  |
|------------|----------------------------|--|
| Type       | SAKQS 6/2                  | Version  |
| Order No.  | <a href="#">2111240000</a> | Cross-connector (terminal), when screwed in, silver, 41 A, Number of |
| GTIN (EAN) | 4050118440621              | poles: 2, Pitch in mm (P): 8.00, Insulated: No                       |
| Qty.       | 10 ST                      |  |
| Type       | SAKQS 6/4                  | Version  |
| Order No.  | <a href="#">2111670000</a> | Cross-connector (terminal), Width: 6 mm                              |
| GTIN (EAN) | 4050118440614              |  |
| Qty.       | 10 ST                      |  |

## End plates and partition plates



Partition plates and end plates are essential accessories for terminal blocks. Partition plates provide optical and electrical separation of different potentials and functional groups, increasing safety and ensuring a clear structure inside the control cabinet. End plates close the terminal block row on the sides, protect against contact with live parts, and ensure a clean, stable finish. Both components are precisely matched to the respective Weidmüller terminal block series, contributing to safe, compliant, and professional wiring.

## General ordering data

|            |                            |  |
|------------|----------------------------|--|
| Type       | WAP WTL 6 BL               | Version  |
| Order No.  | <a href="#">2863970000</a> | End and partition plate for terminals, blue, Height: 68.5 mm, Width: |
| GTIN (EAN) | 4064675598848              | 1.5 mm, V-O, Wemid   |
| Qty.       | 20 ST                      |  |

## WTL 6 STB BL

Weidmüller Interface GmbH &amp; Co. KG

Klingenbergstraße 26

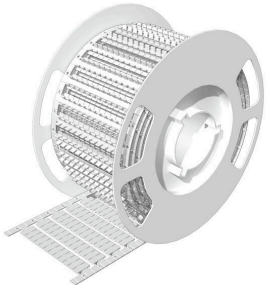
D-32758 Detmold

Germany

## Accessories

www.weidmueller.com

## BLM



## General ordering data

|            |                            |  |  |
|------------|----------------------------|--|--|
| Type       | BLM 5/8 TB                 | Version  |  |
| Order No.  | <a href="#">7760380692</a> | BLM, Terminal marker, 5 x 8 mm, Pitch in mm (P): 8.00 Weidmueller, |  |
| GTIN (EAN) | 6944 1698 19 148           | white  |  |
| Qty.       | 4800 ST                    |  |  |

## Plus



The Dekafix (DEK) marker is the universal marker for all conductor and plug-in connectors as well as for electronic sub-assemblies. The system is ideal for short number sequences and covers a wide range of ready-printed markers.

Strips for fast installation in only one work step. The printing is easy to read, rich in contrast and available in various widths.

- Large range of ready-to-use markers
  - Strips for fast installation
  - Terminal markers, suitable for all Weidmüller cable connectors
  - Available as blank MultiCard or with standard printing
- For custom printing: Please send us a file of our labeling software M-Print PRO or M-Print PRO Online (without installation) for your labeling specifications.

## General ordering data

|            |                            |   |  |
|------------|----------------------------|---|--|
| Type       | DEK 5/8 PLUS MC NE WS      | Version   |  |
| Order No.  | <a href="#">1046350000</a> | Dekafix, Terminal marker, 5 x 8 mm, Pitch in mm (P): 8.00 |  |
| GTIN (EAN) | 4032248782055              | Weidmueller, white  |  |
| Qty.       | 800 ST                     |   |  |

## Cross-connections



The distribution or multiplication of a potential to adjoining terminal blocks is realized via a cross-connection. Additional wiring effort can be easily avoided. Even if the poles are broken out, contact reliability in the terminal blocks is still ensured. Our portfolio offers pluggable and screwable cross-connection systems for modular terminal blocks.

## WTL 6 STB BL

**Weidmüller Interface GmbH & Co. KG**  
 Klingenbergstraße 26  
 D-32758 Detmold  
 Germany

www.weidmueller.com

## Accessories

## General ordering data

|            |                            |   |
|------------|----------------------------|---|
| Type       | ISPF QB58 SW               | Version   |
| Order No.  | <a href="#">0546000000</a> | Insulation profile, PVC, black  |
| GTIN (EAN) | 4008190116705              |   |
| Qty.       | 10 ST                      |   |
| Type       | QB 58/8/15                 | Version   |
| Order No.  | <a href="#">0545400000</a> | Cross-connector (terminal), when screwed in, grey, 27 A, Number of poles: 58, Pitch in mm (P): 8.00, Insulated: No, Width: 0.8 mm |
| GTIN (EAN) | 4008190028794              |   |
| Qty.       | 10 ST                      |   |
| Type       | QB 58/8/9/WI               | Version   |
| Order No.  | <a href="#">0545300000</a> | Cross-connector (terminal), when screwed in, grey, 27 A, Number of poles: 58, Pitch in mm (P): 8.00, Insulated: No, Width: 0.8 mm |
| GTIN (EAN) | 4008190125080              |   |
| Qty.       | 10 ST                      |   |

## End plates and partition plates



Partition plates and end plates are essential accessories for terminal blocks. Partition plates provide optical and electrical separation of different potentials and functional groups, increasing safety and ensuring a clear structure inside the control cabinet. End plates close the terminal block row on the sides, protect against contact with live parts, and ensure a clean, stable finish. Both components are precisely matched to the respective Weidmüller terminal block series, contributing to safe, compliant, and professional wiring.

## General ordering data

|            |                            |  |
|------------|----------------------------|--|
| Type       | WAP WTL 6 GR               | Version  |
| Order No.  | <a href="#">2868500000</a> | End and partition plate for terminals, grey, Height: 68.5 mm, Width: |
| GTIN (EAN) | 4064675619574              | 1.5 mm, V-O, Wemid   |
| Qty.       | 20 ST                      |  |

## Accessorie



Current and voltage transformer wiring  
 Our test disconnect terminal blocks featuring spring and screw connection technology allow you to create all the important converter circuits for measuring current, voltage and power in a safe and sophisticated way.

## General ordering data

|            |                            |   |
|------------|----------------------------|---|
| Type       | WAP WTL 6 SW               | Version   |
| Order No.  | <a href="#">2868510000</a> | End and partition plate for terminals, black, Height: 68.5 mm, Width: |
| GTIN (EAN) | 4064675619581              | 1.5 mm, V-O, Wemid  |
| Qty.       | 20 ST                      |   |
| Type       | WAP WTL 6                  | Version   |
| Order No.  | <a href="#">2863960000</a> | End and partition plate for terminals, dark beige, Height: 68.5 mm,   |
| GTIN (EAN) | 4064675598824              | Width: 1.5 mm, V-O, Wemid   |
| Qty.       | 20 ST                      |   |

## WTL 6 STB BL

Weidmüller Interface GmbH &amp; Co. KG

Klingenbergstraße 26

D-32758 Detmold

Germany

www.weidmueller.com

## Accessories

## End bracket



Weidmüller's range of products includes end brackets that guarantee a permanent, reliable mounting on the terminal rail and prevent sliding. Versions with and without screws are available. The end brackets include marking options, also for group markers, and also a test plug holder.

## General ordering data

|            |                            |  |
|------------|----------------------------|--|
| Type       | WEW 35/2                   | Version  |
| Order No.  | <a href="#">1061200000</a> | End bracket, dark beige, TS 35, HB, Wemid, Width: 8 mm, 100 °C |
| GTIN (EAN) | 4008190030230              |  |
| Qty.       | 50 ST                      |  |
| Type       | WEW 35/2 GR                | Version  |
| Order No.  | <a href="#">1859200000</a> | End bracket, grey, TS 35, V-2, Wemid, Width: 8 mm, 100 °C      |
| GTIN (EAN) | 4032248411658              |  |
| Qty.       | 50 ST                      |  |
| Type       | WEW 35/2 SW                | Version  |
| Order No.  | <a href="#">1061210000</a> | End bracket, black, TS 35, V-2, Wemid, Width: 8 mm, 100 °C     |
| GTIN (EAN) | 4032248136278              |  |
| Qty.       | 50 ST                      |  |
| Type       | WEW 35/2 V0 GF SW          | Version  |
| Order No.  | <a href="#">1479000000</a> | End bracket, black, TS 35, V-0, Wemid, Width: 8 mm, 130 °C     |
| GTIN (EAN) | 4050118286779              |  |
| Qty.       | 50 ST                      |  |

## Testadapter and testsockets



Test adapters and test plugs are used for the electrical connection between terminal blocks and the test equipment. In this way, an electrical contact can be established in the wired state and measurements can be done easily.

## General ordering data

|            |                            |                                |
|------------|----------------------------|--------------------------------|
| Type       | PS 4 F.STB 4               | Version                        |
| Order No.  | <a href="#">0299600000</a> | Test adapter (terminal), 230 V |
| GTIN (EAN) | 4008190074043              |                                |
| Qty.       | 20 ST                      |                                |

## WTL 6 STB BL

**Weidmüller Interface GmbH & Co. KG**  
 Klingenbergstraße 26  
 D-32758 Detmold  
 Germany

## Accessories

www.weidmueller.com

## Accessorie



Current and voltage transformer wiring  
 Our test disconnect terminal blocks featuring spring and screw connection technology allow you to create all the important converter circuits for measuring current, voltage and power in a safe and sophisticated way.

## General ordering data

|            |                            |   |
|------------|----------------------------|---|
| Type       | STB 30.5 IH/BL             | Version   |
| Order No.  | <a href="#">0341200000</a> | Socket (terminal), Plug-in depth: 10 mm, Depth: 31.7 mm |
| GTIN (EAN) | 4008190044077              |   |
| Qty.       | 50 ST                      |   |
| Type       | STB 30.5 IH/BR             | Version   |
| Order No.  | <a href="#">1027870000</a> | Socket (terminal), Plug-in depth: 10 mm, Depth: 31.7 mm |
| GTIN (EAN) | 4032248755615              |   |
| Qty.       | 50 ST                      |   |
| Type       | STB 30.5 IH/GE             | Version   |
| Order No.  | <a href="#">0341500000</a> | Socket (terminal), Plug-in depth: 10 mm, Depth: 31.7 mm |
| GTIN (EAN) | 4008190130961              |   |
| Qty.       | 50 ST                      |   |
| Type       | STB 30.5 IH/GN             | Version   |
| Order No.  | <a href="#">0341400000</a> | Socket (terminal), Plug-in depth: 10 mm, Depth: 31.7 mm |
| GTIN (EAN) | 4008190008093              |   |
| Qty.       | 50 ST                      |   |
| Type       | STB 30.5 IH/GR             | Version   |
| Order No.  | <a href="#">0341100000</a> | Socket (terminal), Plug-in depth: 10 mm, Depth: 31.7 mm |
| GTIN (EAN) | 4008190083960              |   |
| Qty.       | 50 ST                      |   |

## Testadapter and testsockets



Test adapters and test plugs are used for the electrical connection between terminal blocks and the test equipment. In this way, an electrical contact can be established in the wired state and measurements can be done easily.

## General ordering data

|            |                            |   |
|------------|----------------------------|---|
| Type       | STB 30.5 IH/RT             | Version   |
| Order No.  | <a href="#">0341300000</a> | Socket (terminal), Plug-in depth: 10 mm, Depth: 31.7 mm |
| GTIN (EAN) | 4008190157852              |   |
| Qty.       | 50 ST                      |   |

**Accessories**

**Accessorie**



Current and voltage transformer wiring  
 Our test disconnect terminal blocks featuring spring and screw connection technology allow you to create all the important converter circuits for measuring current, voltage and power in a safe and sophisticated way.

**General ordering data**

|            |                            |   |
|------------|----------------------------|---|
| Type       | STB 30.5 IH/SW             | Version   |
| Order No.  | <a href="#">0341000000</a> | Socket (terminal), Plug-in depth: 10 mm, Depth: 31.7 mm |
| GTIN (EAN) | 4008190015299              |   |
| Qty.       | 50 ST                      |   |
| Type       | STB 30.5 IH/VI             | Version   |
| Order No.  | <a href="#">0341600000</a> | Socket (terminal), Plug-in depth: 10 mm, Depth: 31.7 mm |
| GTIN (EAN) | 4008190026035              |   |
| Qty.       | 50 ST                      |   |