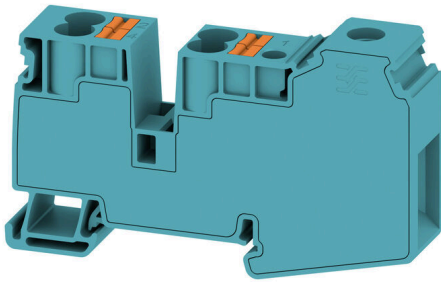


AWPD 35 4X10 BL

Weidmüller Interface GmbH & Co. KG
Klingenbergstraße 26
D-32758 Detmold
Germany

www.weidmueller.com



Our feed-in terminal blocks in combination with cross-connections offer the possibility of flexible potential distribution on terminal blocks with a different rated cross-section.

General ordering data

Version	Potential distributor terminal, Screw connection, blue, 35 mm ² , 110 A, 1000 V, Number of connections: 5, Number of levels: 1
Order No.	2860570000
Type	AWPD 35 4X10 BL
GTIN (EAN)	4064675576006
Qty.	20 items

AWPD 35 4X10 BL

Weidmüller Interface GmbH & Co. KG

Klingenbergstraße 26

D-32758 Detmold

Germany

www.weidmueller.com

Technical data

Approvals

Approvals



ROHS Conform

UL File Number Search [UL Website](#)

Certificate No. (cURus) E60693

Dimensions and weights

Depth	51.6 mm	Depth (inches)	2.0315 inch
Height	86.18 mm	Height (inches)	3.3929 inch
Width	16.2 mm	Width (inches)	0.6378 inch
Net weight	40 g		

Temperatures

Storage temperature	-25 °C...55 °C	Ambient temperature	-60 °C...65 °C
Continuous operating temp., min.	-60 °C	Continuous operating temp., max.	110 °C

Environmental Product Compliance

RoHS Compliance Status	Compliant without exemption
REACH SVHC	No SVHC above 0.1 wt%

Material data

Basic material	Wemid	Colour	blue
Colour of operational elements	orange	UL 94 flammability rating	V-0

System specifications

Version	Hybrid terminal, Potential distributor	End cover plate required	No
Number of potentials	1	Number of levels	1
Number of clamping points per level	5	Number of potentials per tier	1
Levels cross-connected internally	No	Mounting rail	TS 35
N-function	No	PE function	No
PEN function	No		

Additional technical data

Open sides	closed	Snap-on	Yes
Explosion-tested version	No	Type of mounting	TS 35

Conductors for clamping (additional connection)

Clamping range, further connection, max.	10 mm ²	Clamping range, further connection, min.	0.5 mm ²
Conductor cross-section, flexible plus plastic collar DIN 46228/1, further connection, max.	10 mm ²	Conductor cross-section, flexible plus plastic collar DIN 46228/1, further connection, min.	0.5 mm ²
Conductor cross-section, flexible, further 0.5 mm ² connection, min.		Rated cross-section, further connection	6 mm ²
Cross-section for connected wire, multi-core, further connection, min.	0.5 mm ²	Cross-section for connected wire, multi-core, further connection, max.	10 mm ²

AWPD 35 4X10 BL

Weidmüller Interface GmbH & Co. KG

Klingenbergstraße 26
D-32758 Detmold
Germany

www.weidmueller.com

Technical data

Cross-section for connected wire, AWG, AWG 20 additional connection, min.

Cross-section for connected wire, solid-core, further connection, max. 0.5 mm²

Cross-section for connected wire, flexible, further connection, max. 10 mm²

Cross-section for connected wire, solid-core, further connection, min. 0.5 mm²

Connection type, additional connection PUSH IN

Cross-section for connected wire, AWG, AWG 6 additional connection, max.

Conductors for clamping (rated connection)

Gauge to IEC 60947-1	B9
Connection direction	top
Tightening torque, min.	2.5 Nm
Type of connection 2	PUSH IN
Number of connections	5
Clamping range, min.	1.5 mm ²
Blade size	1 x 5.5
Wire connection cross-section, finely stranded with wire-end ferrules DIN 46228/4, max.	35 mm ²
Wire connection cross-section, finely stranded with wire-end ferrules DIN 46228/1, max.	35 mm ²
Wire connection cross section, finely stranded, max.	35 mm ²
Connection cross-section, stranded, max.	35 mm ²
Twin wire-end ferrules, max.	6 mm ²
Wire connection cross-section, solid core, max.	35 mm ²

Wire connection cross section AWG, max.	AWG 14
Tightening torque, max.	2.5 Nm
Stripping length	17 mm
Type of connection	Screw connection
Clamping range, max.	35 mm ²
Clamping screw	M 6
Wire connection cross section AWG, min.	AWG 2
Wire connection cross-section, finely stranded with wire-end ferrules DIN 46228/4, min.	1.5 mm ²
Wire connection cross-section, finely stranded with wire-end ferrules DIN 46228/1, min.	1.5 mm ²
Wire connection cross section, finely stranded, min.	1.5 mm ²
Connection cross-section, stranded, min.	1.5 mm ²
Twin wire-end ferrules, min.	1.5 mm ²
Wire connection cross-section, solid core, min.	1.5 mm ²

General

Wire connection cross section AWG, max.	AWG 14
Standards	IEC 60947-7-1

Wire connection cross section AWG, min.	AWG 2
Mounting rail	TS 35

Rating data

Rated cross-section	35 mm ²
Rated AC voltage	1000 V
Nominal current	110 A
Standards	IEC 60947-7-1
Rated impulse withstand voltage	8 kV
Surge voltage category	III

Rated voltage	1000 V
Rated DC voltage	1000 V
Current at maximum wires	110 A
Volume resistance according to IEC 60947-7-x	0.26 mΩ
Power loss in accordance with IEC 60947-7-x	4.00 W
Pollution severity	3

UL rating data

Conductor size Factory wiring max. (cURus)	2 AWG
Conductor size Field wiring min. (cURus)	14 AWG
Conductor size Field wiring max. (cURus)	2 AWG

Certificate No. (cURus)	E60693
Conductor size Factory wiring min. (cURus)	14 AWG

Technical data

Classifications

ETIM 8.0	EC000897	ETIM 9.0	EC000897
ETIM 10.0	EC000897	ECLASS 14.0	27-25-01-19
ECLASS 15.0	27-25-01-19		

AWPD 35 4X10 BL

Weidmüller Interface GmbH & Co. KG
Klingenbergstraße 26
D-32758 Detmold
Germany

Drawings

www.weidmueller.com

