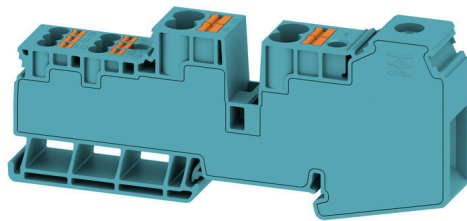


AWPD 35 4X6/6X2.5 BL

Weidmüller Interface GmbH & Co. KG
Klingenbergstraße 26
D-32758 Detmold
Germany

www.weidmueller.com



Our feed-in terminal blocks in combination with cross-connections offer the possibility of flexible potential distribution on terminal blocks with a different rated cross-section.

General ordering data

Version	Potential distributor terminal, Screw connection, blue, 35 mm ² , 110 A, 1000 V, Number of connections: 11, Number of levels: 1
Order No.	2860560000
Type	AWPD 35 4X6/6X2.5 BL
GTIN (EAN)	4064675575993
Qty.	20 items

AWPD 35 4X6/6X2.5 BL

Weidmüller Interface GmbH & Co. KG
Klingenbergstraße 26
D-32758 Detmold
Germany

www.weidmueller.com

Technical data

Approvals

Approvals



ROHS Conform

UL File Number Search [UL Website](#)

Certificate No. (cURus) E60693

Dimensions and weights

Depth	51.6 mm	Depth (inches)	2.0315 inch
Height	117.93 mm	Height (inches)	4.6429 inch
Width	16.2 mm	Width (inches)	0.6378 inch
Net weight	80 g		

Temperatures

Storage temperature	-25 °C...55 °C	Ambient temperature	-60 °C...65 °C
Continuous operating temp., min.	-60 °C	Continuous operating temp., max.	110 °C

Environmental Product Compliance

RoHS Compliance Status	Compliant without exemption
REACH SVHC	No SVHC above 0.1 wt%

Material data

Basic material	Wemid	Colour	blue
Colour of operational elements	orange	UL 94 flammability rating	V-0

System specifications

Version	Hybrid terminal, Potential distributor	End cover plate required	No
Number of potentials	1	Number of levels	1
Number of clamping points per level	11	Number of potentials per tier	1
Levels cross-connected internally	No	Mounting rail	TS 35
N-function	No	PE function	No
PEN function	No		

Additional technical data

Open sides	closed	Snap-on	Yes
Explosion-tested version	No	Type of mounting	TS 35

CSA rating data

Current size C (CSA)	600 V	Certificate No. (CSA)	227442-80219640
----------------------	-------	-----------------------	-----------------

AWPD 35 4X6/6X2.5 BL

Weidmüller Interface GmbH & Co. KG
 Klingenbergstraße 26
 D-32758 Detmold
 Germany

www.weidmueller.com

Technical data

Conductors for clamping (additional connection)

Conductor cross-section, flexible plus plastic collar DIN 46228/1, further connection, max.	10 mm ²	Conductor cross-section, flexible plus plastic collar DIN 46228/1, further connection, min.	0.5 mm ²
Rated cross-section, further connection	6 mm ²	Cross-section for connected wire, multi-core, further connection, min.	0.5 mm ²
Cross-section for connected wire, multi-core, further connection, max.	10 mm ²	Cross-section for connected wire, AWG, additional connection, min.	AWG 20
Cross-section for connected wire, solid-core, further connection, min.	0.5 mm ²	Cross-section for connected wire, solid-core, further connection, max.	10 mm ²
Connection type, additional connection	PUSH IN	Cross-section for connected wire, flexible, further connection, max.	10 mm ²
Cross-section for connected wire, AWG, additional connection, max.	AWG 10		

Conductors for clamping (rated connection)

Gauge to IEC 60947-1	B9	Wire connection cross section AWG, max.	AWG 14
Connection direction	top	Tightening torque, max.	2.5 Nm
Tightening torque, min.	2.5 Nm	Stripping length	17 mm
Type of connection 2	PUSH IN	Type of connection	Screw connection
Number of connections	11	Clamping range, max.	35 mm ²
Clamping range, min.	1.5 mm ²	Clamping screw	M 6
Blade size	1 x 5.5	Wire connection cross section AWG, min.	AWG 2
Wire connection cross-section, finely stranded with wire-end ferrules DIN 46228/4, max.	35 mm ²	Wire connection cross-section, finely stranded with wire-end ferrules DIN 46228/4, min.	1.5 mm ²
Wire connection cross-section, finely stranded with wire-end ferrules DIN 46228/1, max.	35 mm ²	Wire connection cross-section, finely stranded with wire-end ferrules DIN 46228/1, min.	1.5 mm ²
Wire connection cross section, finely stranded, max.	35 mm ²	Wire connection cross section, finely stranded, min.	1.5 mm ²
Connection cross-section, stranded, max.	35 mm ²	Connection cross-section, stranded, min.	1.5 mm ²
Twin wire-end ferrules, max.	6 mm ²	Twin wire-end ferrules, min.	1.5 mm ²
Wire connection cross-section, solid core, max.	35 mm ²	Wire connection cross-section, solid core, min.	1.5 mm ²

General

Wire connection cross section AWG, max.	AWG 14	Wire connection cross section AWG, min.	AWG 2
Standards	IEC 60947-7-1	Mounting rail	TS 35

Rating data

Rated cross-section	35 mm ²	Rated voltage	1000 V
Rated AC voltage	1000 V	Rated DC voltage	1000 V
Nominal current	110 A	Current at maximum wires	110 A
Standards	IEC 60947-7-1	Volume resistance according to IEC 60947-7-x	0.26 mΩ
Rated impulse withstand voltage	8 kV	Power loss in accordance with IEC 60947-7-x	4.00 W
Surge voltage category	III	Pollution severity	3

AWPD 35 4X6/6X2.5 BL

Weidmüller Interface GmbH & Co. KG
Klingenbergstraße 26
D-32758 Detmold
Germany

www.weidmueller.com

Technical data**UL rating data**

Conductor size Factory wiring max. (cURus)	2 AWG	Certificate No. (cURus)	E60693
Conductor size Field wiring min. (cURus)	14 AWG	Conductor size Factory wiring min. (cURus)	14 AWG
Conductor size Field wiring max. (cURus)	2 AWG		

Classifications

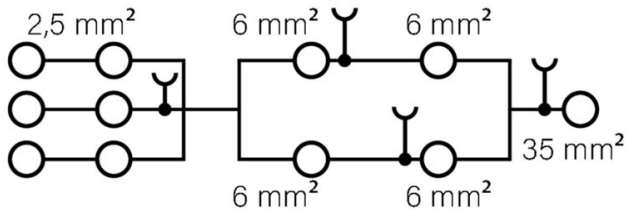
ETIM 8.0	EC000897	ETIM 9.0	EC000897
ETIM 10.0	EC000897	ECLASS 14.0	27-25-01-19
ECLASS 15.0	27-25-01-19		

AWPD 35 4X6/6X2.5 BL

Weidmüller Interface GmbH & Co. KG
Klingenbergstraße 26
D-32758 Detmold
Germany

www.weidmueller.com

Drawings



AWPD 35 4X6/6X2.5 BL

Weidmüller Interface GmbH & Co. KG
Klingenbergstraße 26
D-32758 Detmold
Germany

www.weidmueller.com

Accessories

Testadapter and testsockets



Test adapters and test plugs are used for the electrical connection between terminal blocks and the test equipment. In this way, an electrical contact can be established in the wired state and measurements can be done easily.

General ordering data

Type	FZS 2/4 RT/80 SAKT4	Version	
Order No.	1276300000	Plug (terminal), Plug-in connection, 2 mm ² , Number of connections: 2,	
GTIN (EAN)	4008190026080	Number of poles: 1, Width: 9 mm	
Qty.	20 ST		