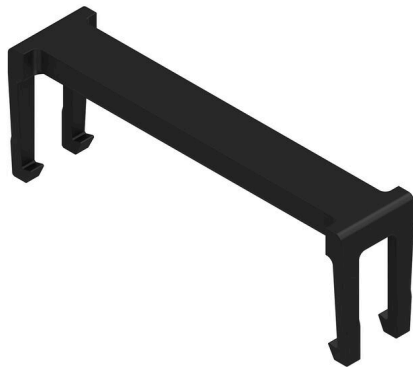


**FC/FFP ZE/40 B BX****Weidmüller Interface GmbH & Co. KG**

Klingenbergstraße 26

D-32758 Detmold

Germany

[www.weidmueller.com](http://www.weidmueller.com)**OMNIMATE® - Board-to-Board connectors****Flexible engineering of compact devices**

The use of future-proof contact systems, as well as the optimisation of manufacturing processes, are increasingly important in the development of efficient industrial devices, especially in the field of Industry 4.0. OMNIMATE® board-to-board connectors feature a 1.27 mm pitch and offer maximum flexibility due to different designs.

- Flexible device design - Industrial suitable density combined with high flexible connection combinations (Mezzanine, Mother-to-Daughter, Extender-card, Cable-to-Board)
- Automation-Ready - Developed for automatic assembly with high precise pin coplanarity and SMT-fixation
- Reliable contact - Up to 500 mating cycles due to industry suitable gold-surface (PdNi-Au)
- Process-Ready - High performance LCP material for reflow soldering
- Scalability - Different heights with high contact overlapping ensure various solutions from 12 – 80 poles.
- Robust miniaturisation - simple and safe connection even possible under unfavorable mating conditions – e.g. inclination or offset.

**General ordering data**

|              |  |
|--------------|--|
| Version      | PCB plug-in connector, Accessories, Pitch in mm (P): 1.27 mm, Number of poles: 40, Box |
| Order No.    | <a href="#">2853140000</a>   |
| Type         | FC/FFP ZE/40 B BX  |
| GTIN (EAN)   | 4064675475910  |
| Qty.         | 100 items  |
| Product data | UL:  |
| Packaging    | Box  |

## FC/FFP ZE/40 B BX

Weidmüller Interface GmbH &amp; Co. KG

Klingenbergstraße 26

D-32758 Detmold

Germany

www.weidmueller.com

## Technical data

## Approvals

|      |         |
|------|---------|
| ROHS | Conform |
|------|---------|

## Dimensions and weights

|            |         |                 |             |
|------------|---------|-----------------|-------------|
| Depth      | 6.3 mm  | Depth (inches)  | 0.248 inch  |
| Height     | 9.9 mm  | Height (inches) | 0.3898 inch |
| Width      | 28.9 mm | Width (inches)  | 1.1378 inch |
| Net weight | 0.43 g  |                 |             |

## Environmental Product Compliance

|                        |                             |
|------------------------|-----------------------------|
| RoHS Compliance Status | Compliant without exemption |
| REACH SVHC             | No SVHC above 0.1 wt%       |

## Material data

|                             |          |                             |          |
|-----------------------------|----------|-----------------------------|----------|
| Insulating material         | LCP      | Colour                      | black    |
| Colour chart (similar)      | RAL 9011 | Moisture Level (MSL)        | 1        |
| UL 94 flammability rating   | V-0      | Contact material            | Cu-alloy |
| Storage temperature, min.   | -40 °C   | Storage temperature, max.   | 70 °C    |
| Operating temperature, min. | -55 °C   | Operating temperature, max. | 125 °C   |

## Packing

|           |           |            |           |
|-----------|-----------|------------|-----------|
| Packaging | Box       | VPE length | 120.00 mm |
| VPE width | 100.00 mm | VPE height | 80.00 mm  |

## Important note

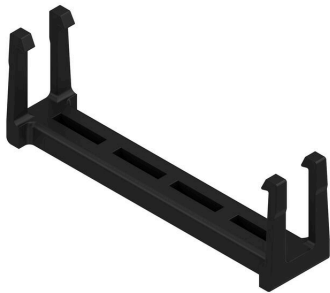
|                |  |
|----------------|--|
| IPC conformity | Conformity: The products are developed, manufactured and delivered according international recognized standards and norms and comply with the assured properties in the data sheet resp. fulfill decorative properties in accordance with IPC-A-610 "Class 2". Further claims on the products can be evaluated on request. |
|----------------|--|

Notes

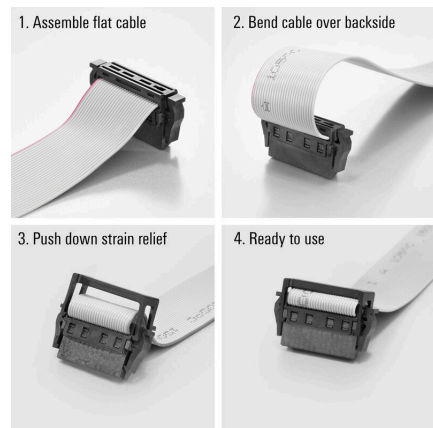
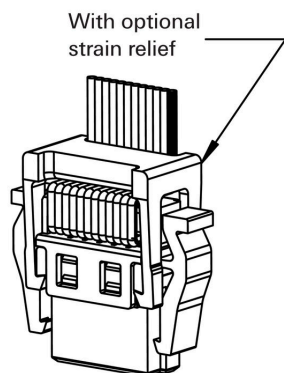
## Classifications

|             |             |             |             |
|-------------|-------------|-------------|-------------|
| ETIM 8.0    | EC002943    | ETIM 9.0    | EC002943    |
| ETIM 10.0   | EC002943    | ECLASS 14.0 | 27-46-04-02 |
| ECLASS 15.0 | 27-46-04-02 |             |             |

**Drawings**



With optional strain relief



Assembly of strain relief