

## IE-SW-ELB-16-16TX

**Weidmüller Interface GmbH & Co. KG**  
 Klingenbergstraße 26  
 D-32758 Detmold  
 Germany

[www.weidmueller.com](http://www.weidmueller.com)



### Features of EcoLine Series B Switches

- Covers the most common port combinations with RJ45 and SFP ports for flexible usage
- Network availability is strongly increased thanks to Broadcast Storm Protection
- Support real time communication e.g. in PROFINET networks due to the "Quality of Service" functionality – "PROFINET Conformance Class A"
- Very small design for installation in places where space is critical
- A rotatable DIN-rail-clip allows use at locations offering very limited vertical space such as installation cabinets
- The AC voltage input enables use without a switching power supply to save cost in e.g. building automation
- Plastic-free, handling optimized packaging for fast processing and environmental friendliness

### General ordering data

Version	Network switch, unmanaged, Fast Ethernet, Number of ports: 16x RJ45, IP40, -40 °C...75 °C
Order No.	<a href="#">2828580000</a>
Type	IE-SW-ELB-16-16TX
GTIN (EAN)	4064675369936
Qty.	1 items

**IE-SW-ELB-16-16TX**

**Weidmüller Interface GmbH & Co. KG**  
 Klingenbergstraße 26  
 D-32758 Detmold  
 Germany

www.weidmueller.com

**Technical data**

**Approvals**

Approvals



ROHS	Conform
UL File Number Search	<a href="#">UL Website</a>
Certificate no. (cULus)	E141197

**Dimensions and weights**

Depth	110 mm	Depth (inches)	4.3307 inch
Height	143 mm	Height (inches)	5.6299 inch
Width	50 mm	Width (inches)	1.9685 inch
Net weight	526 g		

**Temperatures**

Storage temperature	-40 °C...85 °C	Operating temperature	-40 °C...75 °C
Humidity	5 to 95 % (non-condensing)		

**Environmental Product Compliance**

RoHS Compliance Status	Compliant with exemption
RoHS Exemption (if applicable/known)	6c, 7a, 7cl
REACH SVHC	Lead 7439-92-1
SCIP	95f06c58-199a-4ab7-817c-c2503ba62133

**EMC conformity and approvals**

Free fall	According to IEC 60068-2-31	EMC standards	EN 55032, EN 55035, EN 61000-6-2, EN 61000-6-4, FCC Part 15 Subpart B Class A, IEC 61000-4-2 ESD: Contact: 6 kV; Air: 8 kV, IEC 61000-4-3 RS: 80 MHz to 1 Ghz: 10 V/m, IEC 61000-4-4 EFT: Power: 2 kV; Signal: 1 kV, IEC 61000-4-5 Surge: Power: 2 kV; Signal: 2 kV, IEC 61000-4-6 CS: 10 Vrms, IEC 61000-4-8
Vibration	according to IEC 60068-2-6	Shock	according to IEC 60068-2-27
Safety standard	UL 61010-1, UL 61010-2-201, EN IEC 62368-1		

**Environmental conditions**

Operating temperature, max.	75 °C
Operating temperature, min.	-40 °C
Humidity	5 to 95 % (non-condensing)
Storage temperature, max.	85 °C
Storage temperature, min.	-40 °C

## IE-SW-ELB-16-16TX

Weidmüller Interface GmbH &amp; Co. KG

Klingenbergstraße 26

D-32758 Detmold

Germany

www.weidmueller.com

## Technical data

Operating altitude	Altitude, max.	2000 m
	Note	in acc. with UL

## Guarantee

Time interval	5 years
---------------	---------

## Interfaces

RJ45 ports	10/100BaseT(X), auto negotiation, Full-/half-duplex mode, Auto MDI/MDI-X port	Function DIP switch	Broadcast storm protection enable/disable, QoS (on/off), MAC frame filtering (on/off)
Number of ports	16x RJ45	LED indicator	Power LED: PWR, Port LED: LNK/ACT, 10/100M (RJ45 port)

## MTBF

MTBF	According to Standard	Telcordia SR-332
	Operating time (hours), min.	1197919 h
	Ambient temperature	25 °C

## Management features

Network traffic filter	Quality of Service (QoS), Class of Service (CoS), MAC frame filtering (LLDP frame blocking)	Industrial protocol support	PROFINET device acc. to conformance class A
------------------------	---	-----------------------------	---

## Power supply

Reverse polarity protection	Yes	
Supply voltage	12/24/48 V DC, 24 V AC, 1 single input	
Overload current protection	Yes	
Connection type	1 removable 2-pin terminal block	
Voltage supply range	Voltage type	DC
	Voltage, min.	9.6 V
	Voltage, max.	60 V
	Voltage type	AC
	Voltage, min.	18 V
Current consumption	Voltage	24 V
	Current	0.17 A

## Switch characteristics

Priority queues	4	MAC table size	8 K
Packet buffer size	4 Mbit	Bandwidth backplane	3.2 Gbit/s

## Technical data

Housing main material	Metal	Type of mounting	DIN rail
Protection degree	IP40	Speed	Fast Ethernet
Switch	unmanaged		

**Technical data****Technology**

Data switching	Store and Forward	Flow control	IEEE 802.3x flow control
Standard	IEEE 802.3 for 10BASE-T, IEEE 802.3u for 100BASE-TX, IEEE 802.3x for flow control, IEEE 802.1p for Class of Service / Quality of Service (CoS/QoS)		

**Classifications**

ETIM 8.0	EC000734	ETIM 9.0	EC000734
ETIM 10.0	EC000734	ECLASS 14.0	19-17-04-02
ECLASS 15.0	19-17-04-02		

## IE-SW-ELB-16-16TX

**Weidmüller Interface GmbH & Co. KG**  
 Klingenbergstraße 26  
 D-32758 Detmold  
 Germany

www.weidmueller.com

## Accessories

## Mounting kit for 19" rack assembly

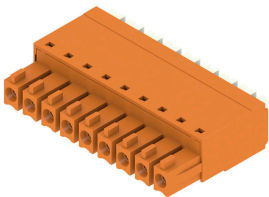
- For assembling DIN rail-based devices on 19" racks



## General ordering data

Type	RM-KIT	Version	
Order No.	<a href="#">1241440000</a>	Kit for 19"-rack mounting	
GTIN (EAN)	4050118029154		
Qty.	1 ST		

## BCF 3.81/180



**PUSH IN** - Weidmüller's innovative connection system simplifies the wire connection process.

The benefits for users and applications:

- High packaging density due to very low component height. Simply insert the prepared wire - finished
- High component density with the compact SCDN / SCDN-THR two-tier pin header
- Simplified processing due to integrated push buttons for opening the clamping unit
- Intuitive handling – since the wire-entry area and handling area are clearly separated
- tool-free locking and releasing when using Weidmüller's patented release latch (LR)

The Weidmüller plug-in connectors, pitch 3.81 mm (0.15 inch), are compatible with the layout of customary plug-in connectors, can be coded and provide space for printing.

## General ordering data

Type	BCF 3.81/02/180 SN BK BX	Version	
Order No.	<a href="#">1969890000</a>	PCB plug-in connector, female plug, 3.81 mm, Number of poles: 2,	
GTIN (EAN)	4032248679522	180°, PUSH IN with push button, Clamping range, max. : 1.5 mm²,	
Qty.	50 ST	Box	