

IE-SW-ELB-08-8GT

Weidmüller Interface GmbH & Co. KG

Klingenbergstraße 26

D-32758 Detmold

Germany

www.weidmueller.com



Features of EcoLine Series B Switches

- Covers the most common port combinations with RJ45 and SFP ports for flexible usage
- Network availability is strongly increased thanks to Broadcast Storm Protection
- Support real time communication e.g. in PROFINET networks due to the "Quality of Service" functionality – "PROFINET Conformance Class A"
- Very small design for installation in places where space is critical
- A rotatable DIN-rail-clip allows use at locations offering very limited vertical space such as installation cabinets
- The AC voltage input enables use without a switching power supply to save cost in e.g. building automation
- Plastic-free, handling optimized packaging for fast processing and environmental friendliness

General ordering data

Version	Network switch, unmanaged, Gigabit Ethernet, Number of ports: 8x RJ45, IP40, -40 °C...75 °C
Order No.	2828570000
Type	IE-SW-ELB-08-8GT
GTIN (EAN)	4064675369912
Qty.	1 items

Technical data

Approvals

Approvals



ROHS	Conform
UL File Number Search	UL Website
Certificate no. (cULus)	E141197

Dimensions and weights

Depth	64 mm	Depth (inches)	2.5197 inch
Height	103 mm	Height (inches)	4.0551 inch
Width	43.5 mm	Width (inches)	1.7126 inch
Net weight	195 g		

Temperatures

Storage temperature	-40 °C...85 °C	Operating temperature	-40 °C...75 °C
Humidity	5 to 95 % (non-condensing)		

Environmental Product Compliance

RoHS Compliance Status	Compliant with exemption
RoHS Exemption (if applicable/known)	6c, 7a, 7cl
REACH SVHC	Lead 7439-92-1
SCIP	95f06c58-199a-4ab7-817c-c2503ba62133

EMC conformity and approvals

Free fall	According to IEC 60068-2-31	EMC standards	EN 55032, EN 55035, FCC Part 15 Subpart B Class A, IEC 61000-4-2 ESD: Contact: 6 kV; Air: 8 kV, IEC 61000-4-3 RS: 80 MHz to 1 Ghz: 10 V/m, IEC 61000-4-4 EFT: Power: 2 kV; Signal: 1 kV, IEC 61000-4-5 Surge: Power: 2 kV; Signal: 2 kV, IEC 61000-4-6 CS: 10 Vrms, IEC 61000-4-8, EN 61000-6-2, EN 61000-6-4
Vibration	according to IEC 60068-2-6	Shock	according to IEC 60068-2-27
Safety standard	UL 61010-1, UL 61010-2-201, EN IEC 62368-1		

Environmental conditions

Operating temperature, max.	75 °C
Operating temperature, min.	-40 °C
Humidity	5 to 95 % (non-condensing)
Storage temperature, max.	85 °C
Storage temperature, min.	-40 °C
Operating altitude	Altitude, max. 2000 m

IE-SW-ELB-08-8GT

Weidmüller Interface GmbH & Co. KG
 Klingenbergstraße 26
 D-32758 Detmold
 Germany

www.weidmueller.com

Technical data

Note in acc. with UL

Guarantee

Time interval 5 years

Interfaces

RJ45 ports	10/100/1000BaseT(X), auto negotiation, Full-/half-duplex mode, Auto MDI/MDI-X port	Function DIP switch	Broadcast storm protection enable/disable, QoS (on/off), MAC frame filtering (on/off)
Number of ports	8x RJ45	LED indicator	Power LED: PWR, Port LED: LNK/ACT, 10/100M (RJ45 port)

MTBF

MTBF	According to Standard	Telcordia SR-332
	Operating time (hours), min.	1567427 h
	Ambient temperature	25 °C

Management features

Network traffic filter	Quality of Service (QoS), Class of Service (CoS), MAC frame filtering (LLDP frame blocking)	Industrial protocol support	PROFINET device acc. to conformance class A, CC-Link IE Field, CC-Link IE TSN CC-A
------------------------	---	-----------------------------	--

Power supply

Reverse polarity protection	Yes		
Supply voltage	12/24/48 V DC, 24 V AC, 1 single input		
Overload current protection	Yes		
Connection type	1 removable 2-pin terminal block		
Voltage supply range	Voltage type	DC	
	Voltage, min.	9.6 V	
	Voltage, max.	60 V	
	Voltage type	AC	
	Voltage, min.	18 V	
	Voltage, max.	30 V	
Current consumption	Voltage	24 V	
	Current	0.21 A	

Switch characteristics

Priority queues	4	MAC table size	4 K
Packet buffer size	1.5 Mbit	Bandwidth backplane	16 Gbit/s
Jumbo frame support	up to 9 KB		

Technical data

Housing main material	Metal	Type of mounting	DIN rail
Protection degree	IP40	Speed	Gigabit Ethernet
Switch	unmanaged		

IE-SW-ELB-08-8GT

Weidmüller Interface GmbH & Co. KG
 Klingenbergstraße 26
 D-32758 Detmold
 Germany

www.weidmueller.com

Technical data

Technology

Data switching	Store and Forward	Flow control	IEEE 802.3x flow control
Standard	IEEE 802.3 for 10BASE-T, IEEE 802.3u for 100BASE-TX, IEEE 802.3ab for 1000BASE-T, IEEE 802.3x for flow control, IEEE 802.1p for Class of Service / Quality of Service (CoS/QoS)		

Classifications

ETIM 8.0	EC000734	ETIM 9.0	EC000734
ETIM 10.0	EC000734	ECLASS 14.0	19-17-04-02
ECLASS 15.0	19-17-04-02		

IE-SW-ELB-08-8GT

Weidmüller Interface GmbH & Co. KG
 Klingenbergstraße 26
 D-32758 Detmold
 Germany

www.weidmueller.com

Accessories

Mounting kit for 19" rack assembly

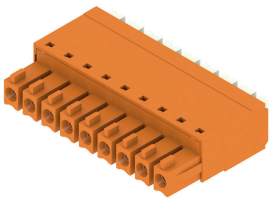
- For assembling DIN rail-based devices on 19" racks



General ordering data

Type	RM-KIT	Version	
Order No.	1241440000	Kit for 19"-rack mounting	
GTIN (EAN)	4050118029154		
Qty.	1 ST		

BCF 3.81/180



PUSH IN - Weidmüller's innovative connection system simplifies the wire connection process.

The benefits for users and applications:

- High packaging density due to very low component height. Simply insert the prepared wire - finished
- High component density with the compact SCDN / SCDN-THR two-tier pin header
- Simplified processing due to integrated push buttons for opening the clamping unit
- Intuitive handling – since the wire-entry area and handling area are clearly separated
- tool-free locking and releasing when using Weidmüller's patented release latch (LR)

The Weidmüller plug-in connectors, pitch 3.81 mm (0.15 inch), are compatible with the layout of customary plug-in connectors, can be coded and provide space for printing.

General ordering data

Type	BCF 3.81/02/180 SN BK BX	Version	
Order No.	1969890000	PCB plug-in connector, female plug, 3.81 mm, Number of poles: 2,	
GTIN (EAN)	4032248679522	180°, PUSH IN with push button, Clamping range, max. : 1.5 mm ² ,	
Qty.	50 ST	Box	